

LOVE YOUR CAREER



PRESENTER
Jennifer McConnell

DATE 12/02/2021
WORKSHOP TITLE
PostGraduate Study-
Is it for me?

Post Graduate Study: Is it for me?

- Self-Assessment?
- PG Study-Things to Consider
- Useful Information
- PG Study-Abroad
- Conversion Courses
- Graduate Roles

Consider your
options

What jobs would
suit me?



What jobs would suit me?- Self-awareness resources

www.prospects.ac.uk Choice to take 2 exercises:

What jobs would suit me?

- **Career Planner** – matches your skills and personality to more than 400 profiles – explore your skills, motivations and desires.
- **Job Match Beta** – Allows you explore which job families you belong to. Offers recommendations on what job would suit you from over 400 job profiles. Once you are done, we provide you with your job family recommendations which aim to provide you with a clear idea of where your strengths and skills lie and how you might use them in a future career

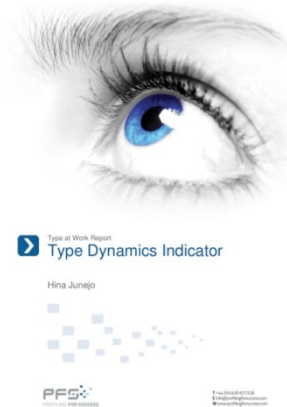
www.careersportal.ie - Choice to take 2 exercises:

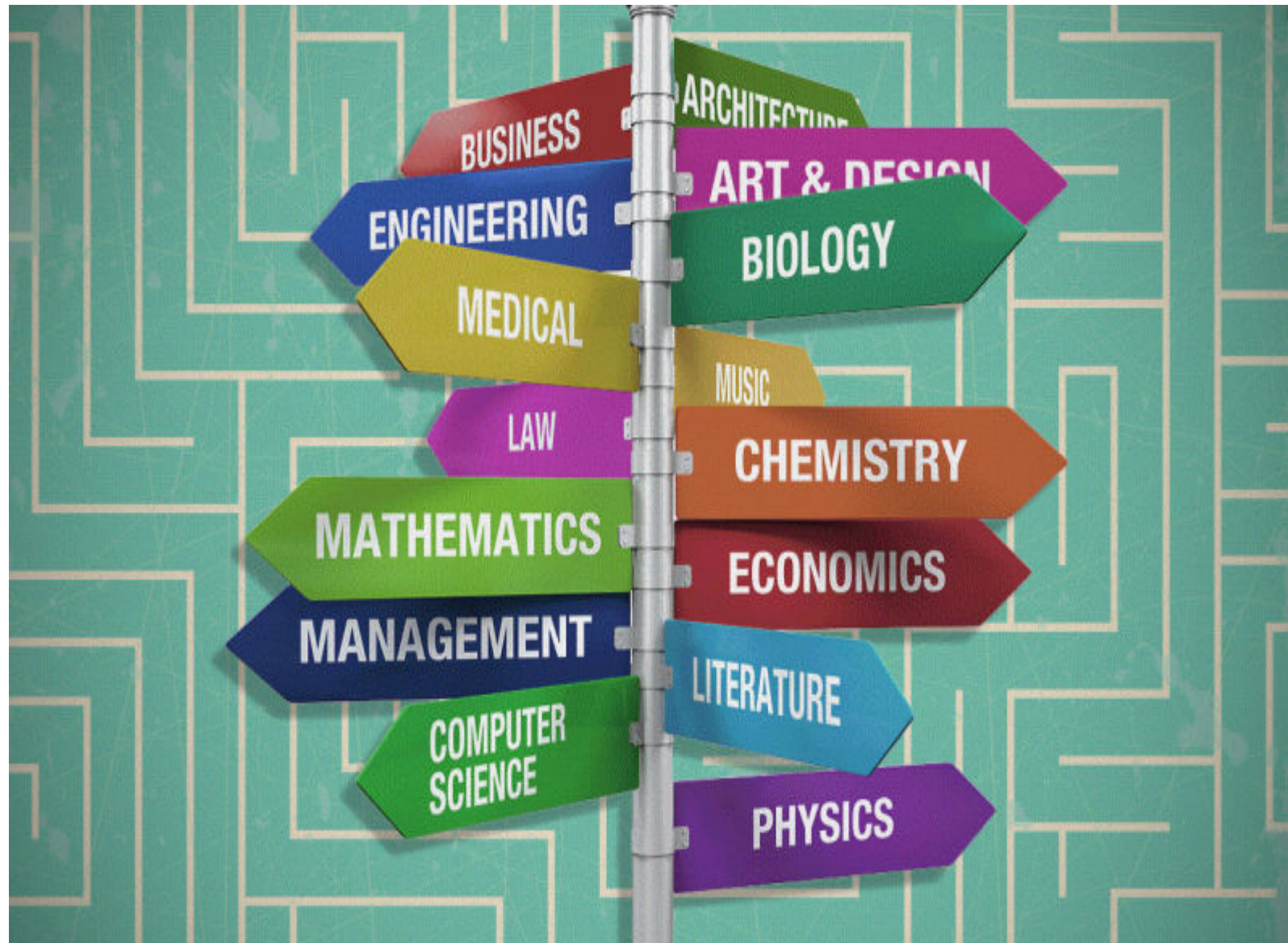
1. Interests profiler – click on explore “Career Matching” and “ CAO course matching”
2. Personality profiler

What jobs would suit me? Self-awareness resources

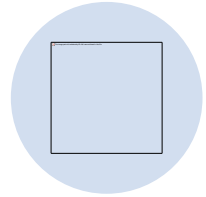
Profiling for Success - Types Dynamics Indicator
(personality assessment), Career Interest Inventory
or Values-based Inventory of Motivation.

Client Code: tflhe | Access code: dublinit | Pa
dub2010 www.profilingforsuccess.com

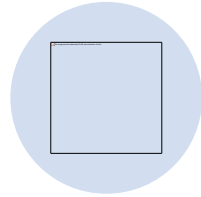




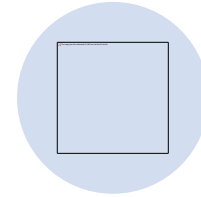
What next?...



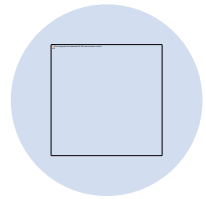
Immediate Graduate
role



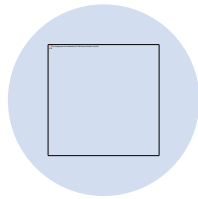
Graduate Programme
Graduate Programme
with PG Study



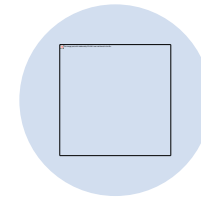
Internship



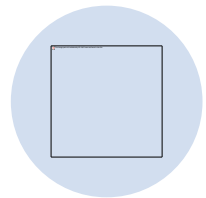
Traineeship, e.g.
Accountancy, Law, etc.



Set up Own Business



Travel



Postgrad Study

**Interested
in doing a
post grad?**



Further Study - general

- Why do it....what are your reasons
- Broaden your skills? (conversion course)
- Or go deeper into an area already covered
- What to do...research what is available
- Full-time or part-time ?
- Fees/funding ?
- Travel implications ?
- Reputation of the course - Find out if anyone in DIT knows about the course
- Employment record ?

Will it suit me?

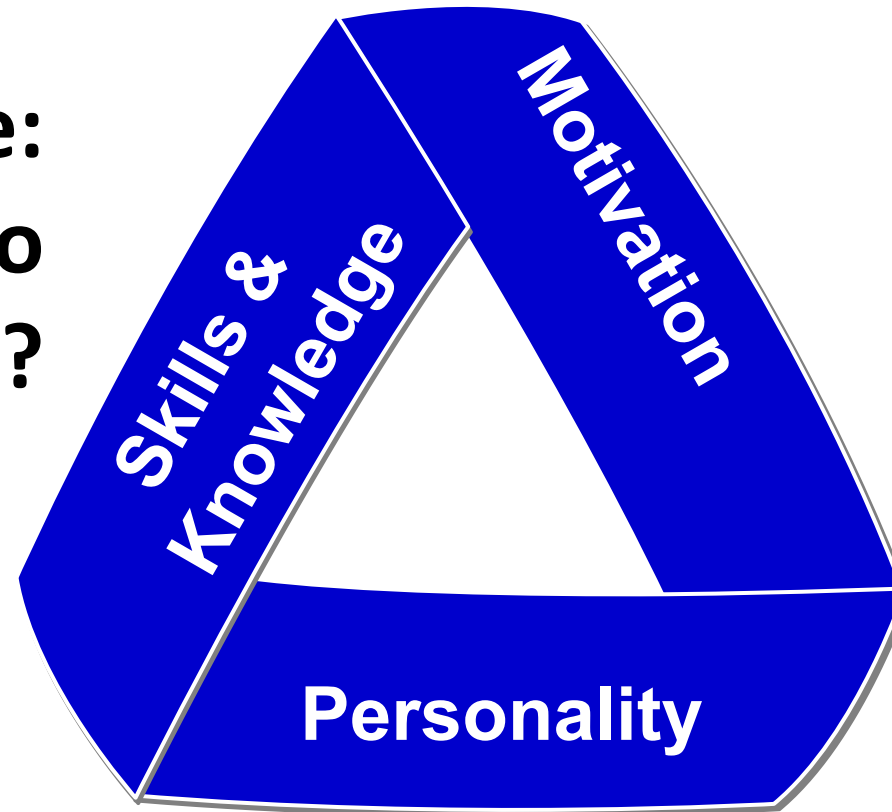
- Will the course suit me? (interests, motivation, skills, personality)
- Course content: subjects, taught or research, placement, group work, project work, thesis, practical elements, class size, industry connections, timetable commitments, entry requirements, learning support
- University – reputation, facilities, location, supports
- Does it fit into my long-term career goal/ideal job?

Chat to us about your options!

- PG websites: www.gradireland.com (Further Study – Conversion courses), www.pac.ie, www.qualifax.ie, www.hea.ie, www.tudublin.ie/careers (City Centre) - Further study section (websites, applications, funding)
- College websites/Prospectus/Open days
- Course module information - www.dit.ie/catalogue
- Talk to PG Office, course co-ordinators, current students, graduates, tasters
- Where do graduates go? FDRs, LinkedIn Alumni function. **My Qualification what next?** www.tudublin.ie/careers (City Centre)
- Reputation of the course/Quality of Supervision/Accredited by Prof Body/Quality of supervision/Industry interaction/Placement

Course Co-ordinators

**Evidence:
Can you do
the Course?**



**Evidence of
Interest /
Motivation**

‘Personality Fit’

Course Application Forms/Interviews and Personal Statements

- ☐ Why the course? Why this University?
- ☐ How did you hear about the programme?
- ☐ How does it fit into your career plans?
- ☐ Experience relevant to your application
- ☐ Strengths, weaknesses, qualities and skills, what you can bring to the group
- ☐ How would you like your career to develop in 5 years
- ☐ Undergraduate degree, academic results, research interests
- ☐ Why you?

Useful websites



Postgrad information - www.gradireland.com (Further Study – Conversion courses), www.qualifax.ie, <https://tudublin.ie/study/postgraduate/>, TU Dublin - Postgrad Admissions pgadmissions.city@tudublin.ie



Study Abroad - www.learnabroad.ie, www.eunicas.ie, www.fulbright.ie (US), www.targetjobs.co.uk (Postgrad), www.prospects.ac.uk (Postgraduate – Study Abroad)



TU Dublin (City Campus) Conversion courses: <https://www.tudublin.ie/study/postgraduate/taught-postgraduate-applications/how-to-apply/>



Springboard and ICT Skills Conversion programmes: <http://www.springboardcourses.ie/>

Useful websites



Student Finance - www.studentfinance.ie/index.html, www.research.ie



Funding/Grant Information – <https://susi.ie/eligibility/postgraduate-student/postgraduate-income-thresholds-and-grant-award-rates>



Citizens Information:
[www.citizensinformation.ie/en/social_welfare/social_welfare_payments/back to education/](http://www.citizensinformation.ie/en/social_welfare/social_welfare_payments/back_to_education/)



Tax relief - <http://www.revenue.ie/en/tax/it/leaflets/it31.html>

Further Study in your Area:

<https://www.tudublin.ie/for-students/career-development-centre/students-and-graduates/my-qualifications---what-next/>

- > CVs, Letters, Applications
- > Getting ready for Interviews
- > Unsure about your course
- > Resources

> **My Qualifications - what next**

Career Coaching

Careers Fairs and Events

Employers

Work Placements

Job Opportunities

Career Development Learning

Further Study

MQWN from the list below!

A B C D E F G H I J K L M N O P Q R S T U V W X Y Z

Course Name	Course Code	Level	MQWN PDF
Accounting & Finance	TU910	8	Accounting and Finance
Accounting	TU305	9	Accounting
Advertising	TU307	9	Advertising
Architecture	TU832	8	Architecture
Architectural Technology	TU831	8	Architectural Technology
Auctioneering, /Valuation and Estate Agency	TU731	8	Auctioneering
Automation Engineering	TU701	7	Automation Engineering
Automotive Management & Technology	TU720	7	Automotive Mgmt and

Professional Bodies

- Association of Chartered Certified Accountants (ACCA)
• www.ireland.accaglobal.com
- Chartered Institute of Management Accountants (CIMA)
www.cimaglobal.com/ireland
- Institute of Chartered Accountants in Ireland (ICAI)
• www.cipd.co.uk
- The Marketing Institute
www.mii.ie
- Chartered Institute of Personnel & Development in Ireland (CIPD)
• www.cipd.co.uk
- Irish Taxation Institute (ITI)
www.taxireland.ie
- Institute of Professional Auctioneers and Valuers (IAVI)
www.iavi.ie
- The Insurance Institute of Ireland
www.insurance-institute.ie

Teaching

- ☐ **Teaching Council** – www.teachingcouncil.ie,
- ☐ **Primary** – PME Primary Teaching (or Undergrad). Entry: Level 8 & Irish (H5), Maths (H7/O6), English (H7/O5)
- ☐ **Post-Primary** – PME Post-Primary (or Undergrad). Level 8 See www.teachingcouncil.ie ('Subject Declaration') www.pac.ie
- ☐ **Third Level** – PhD (Level 10)
- ☐ **Further Education** – Undergrad (level 8 typically) & Teacher Training Qual.
- ☐ **UK (PGCE/PGDE)** - apply through www.UCAS.com
- ☐ www.careersportal.ie, NUI Maynooth Careers Information Sheets –'Teaching'

Resources / Useful links

<https://www.tudublin.ie/for-students/career-development-centre/>

<https://www.tudublin.ie/for-students/career-development-centre/further-study/>

Where to source Postgraduate Study options?

<https://gradireland.com/further-study>

<https://gradireland.com/further-study/advice-and-funding/funding/postgraduate-funding-is-there-any-still-out-there>

<https://www.postgrad.ie/>

<https://www.prospects.ac.uk/postgraduate-courses>

PROSPECTS

[Jobs and work experience](#)[Postgraduate study](#)[Careers advice](#)[Applying for university](#)[← Postgraduate study](#)

Study abroad

Taking your studies abroad will open you up to a whole range of new experiences, allowing you to see the world while furthering your education. Find out everything you'll need to know about student visas, course fees, study exchanges and more.





Study in Australia



Study in Austria



Study in Belgium



Study in Brazil



Study in Canada



Postgraduate Programmes

In addition to undergraduate programmes, there are several thousand Masters programmes taught through English in Continental Europe, in some of the very top Research Universities. Most of these programmes are available at the same fee levels as those charged for undergraduate programmes in the relevant country [e.g. free in Denmark and Sweden and Eur 2143, with interest-free Tuition Fee Loan, in the Netherlands]

If you register with EUNiCAS, we offer you a full personalised search service, for Masters programmes relevant to you. After you register, please email your registration acknowledgement to support@eunicas.com [with 'Postgraduate' as subject of email] together with:

- your preferred study discipline
- your undergraduate degree [subject and grade]
- your preferred budget for tuition fees

We will come back to you, within 48 hours, with a list of recommendations, and will advise you thereafter on how to apply.

<https://www.eunicas.ie/index.php/studying-abroad/postgraduate-programmes.html>

Studying Abroad

[National Education Systems](#)

[Countries & Cities](#)

[What Employers Say](#)

[Postgraduate Programmes](#)

[Cost of Studying in Europe](#)

[Studying Outside Europe](#)

[Search Courses](#)

[Browse by Country](#)

[Browse by Discipline](#)

Keyword



[Important Dates](#)

[Webinars](#)

[Featured Courses](#)

1 Oct 20 Applications open in **the Netherlands**

16 Oct 20 Applications open in **Sweden**

07 Jan 21 Applications open in **Finland**



Personal Statements

<https://www.prospects.ac.uk/postgraduate-study/masters-degrees/personal-statements-for-postgraduate-applications>

Application deadlines

<https://gradireland.com/further-study/advice-and-funding/applications/entry-requirements-and-deadlines-for-postgraduate-courses>

Scholarships/ Funding

<https://gradireland.com/further-study/advice-and-funding/funding/funding-for-postgraduate-study-in-northern-ireland>

<https://susi.ie/postgraduate-student/>

https://www.bordbia.ie/about/talentacademy/?gclid=Cj0KCQiAlsv_BRDtARIsAHMGVSZQLCcRFC8eKPYimJEsy9VZy7_f3SrYPVtfV9SXtPAduPfHd2b0UEYaAqeJEALw_wcB&gclsrc=aw.ds

CONVERSION COURSE:Postgraduate

- Level 8 & 9 taught post graduate available to graduate of ALL disciplines
- Taught postgraduate courses that allow graduates to 'convert' to a new discipline - often fast track - therefore increasing your skills base
- Allows a *second chance* to access to courses that were not available at Leaving Cert
- Generally 1-2 years duration

<https://www.dit.ie/studyatdit/postgraduate/conversion/>

Careers open to all disciplines (Including 'Paths Into...' Series)

Many graduate vacancies don't require specific degree subjects as possession of a degree is taken as evidence of intellectual ability. What is more important to the potential employer is the range of transferable skills and experience you can demonstrate.

Many graduate training programmes take final year students from a wide range of disciplines, register with the [Career Development Centre's Jobsence](#) for a full list of programmes. Here is a range of career areas that are potentially open to graduates of all disciplines. It's important to note that some of these options may require further study either on the job or beforehand.

If you are considering diversifying or changing career direction a postgraduate conversion course may be a viable option.

Some examples of career areas open to students of all disciplines:

- Teaching & Education
- Financial Services & Accounting
- Marketing, Advertising and PR
- Retail, Sales and Customer Service
- Banking, insurance and financial services
- Charities and voluntary sector
- Fund management / administration and investment banking
- Human resources, recruitment and training
- Management consulting
- Management, business and administration
- Media and publishing
- Public sector and civil service
- Social, community and youth

For further information see: www.gradireland.com/career-sectors

Further Study

Are you considering further study or training? See www.tudublin.ie/careers for comprehensive information

As with all choices good research and planning are very important.

Here are some examples of postgraduate courses undertaken graduates of your discipline:

- Masters in Finance, Smurfit Business School UCD
- Masters in Fashion Buying, TU Dublin
- Masters Hospitality Management, TU Dublin
- M.Sc in Strategic Management, TU Dublin
- Postgraduate Diploma in Accounting – TU Dublin
- PhD – TU Dublin
- Masters in Accounting - TU Dublin, DBS, TCD, DCU,
- Accountancy Bodies – CAI, ACCA, CPA, CIMA

Self Employment

Ever thought of being your own boss? Think you have an innovative product or service idea that could have commercial value? Want to commercialise your research? See www.tudublin.ie/careers

Other Options (e.g. Time out, travel etc.)

Volunteering and working with communities with is a great way to gain valuable real world experience, to develop new skills, to meet new people, to do something worthwhile and to improve your employability. For more details, see www.tudublin.ie/careers.

Labour Market Information

For information on the latest labour market trends see www.tudublin.ie/careers.

Additional Information / Advice

For any query you might have, please do not hesitate to get in touch with

Most subject areas available, but high concentration areas such as:

Business

Accountancy

Finance

Marketing

Media

Communications

Law

Education

Computer Science/IT

Hospitality/Tourism/Event Management

Real Estate

Public Relations

Advertising

Fashion Buying

Social Work

Psychology

Health Sciences

Quantity Surveying/GIS

Sustainable Infrastructure

Environmental Health & Safety

Medicine

And more.....

→ ↺

dit.ie/studyatdit/postgraduate/conversion/

🔍 ☆ J

Fees & Funding

FAQs for Postgraduates

Postgraduate Research

Conversion Programmes

English Language Requirements

Qualification Comparison

Part-time

Springboard

Office of Admissions

RELATED LINKS

College of Arts and Business

- [MSc in Creative Digital Media \(F/T\)](#) DT540B
- [MSc in Digital Games \(F/T\)](#) DT540B
- [MSc in Mobile & Web Applications Design \(F/T\)](#) DT540B
- [MSc in Environmental Health & Safety \(F/T\)](#) DT436T
- [MSc in Environmental Health & Safety \(P/T\)](#) DT442T
- [MSc in Food Safety Management \(F/T\)](#) DT9437
- [MSc in Food Safety Management \(P/T\)](#) DT437
- [MA in Journalism \(F/T\)](#) DT542
- [PgDip in Law \(F/T\)](#) DT547
- [PgDip in Law \(P/T\)](#) DT547A
- [MA in Public Relations \(F/T\)](#) DT549
- [MA in Public Affairs & Political Communication \(F/T\)](#) DT569
- [MSc in Tourism Management \(F/T\)](#) DT9434 **(Sept intake)**/DT9433 **(Jan intake)**
- [MSc in Tourism Management \(P/T\)](#) DT9443 **(Sept intake)**/DT9444 **(Jan intake)**
- [MSc in Hospitality Management \(F/T\)](#) DT9435 **(Sept intake)**/DT9436 **(Jan intake)**
- [MSc in Hospitality Management \(P/T\)](#) DT9477 **(Sept intake)**/DT9478 **(Jan intake)**
- [MSc in Event Management \(F/T\)](#) DT9413 **(Sept intake)**/DT9411 **(Jan intake)**
- [MSc in Event Management \(P/T\)](#) DT9414 **(Sept intake)** / DT9412 **(Jan intake)**

College of Business

- [PgDip in Accounting \(F/T\)](#) DT310
- [MSc in Advertising \(Creative Stream\) \(F/T\)](#) DT347
- [MSc in Advertising \(Executive Stream\) \(F/T\)](#) DT347
- [PgDip in Finance \(F/T\)](#) DT374

Entry Requirements

- Subject coverage/degree content
- Any other professional qualifications/training
- Academic record
- Subject knowledge from work experience or voluntary work
- Could be a limited number of places
- Interview and tests in some cases
- Impact of application form

Useful Websites

- www.qualifax.ie (allows you to list & compare courses)
- www.postgradireland.com
- www.postgrad.ie
- www.prospects.ac.uk
- www.dit.ie/careers/studentsgraduates/consideringfurtherstudy/
- [www.ucc.ie/careers/students/Options for Graduates/Post Graduate Study.php](http://www.ucc.ie/careers/students/Options%20for%20Graduates/Post%20Graduate%20Study.php)
- [www.ncirl.ie/Careers/Students & Graduates/Postgraduate Study/Postgraduate -Conversion Courses](http://www.ncirl.ie/Careers/Students%20&%20Graduates/Postgraduate%20Study/Postgraduate%20Conversion%20Courses)

Student Support Ireland

www.studentfinance.ie

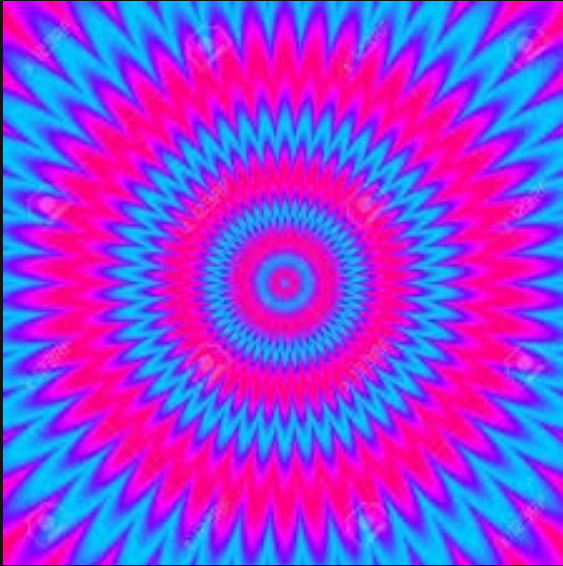
Quality Rating of Courses in the UK

www.timesonline.co.uk

<http://education.guardian.co.uk>

What can you do now?

1. Research Courses and Closing date for applications
2. Self Assessment (Online)
3. Free Courses to Upskill or try out something new



Online Resources

Free online classes:

<https://www.udemy.com/>

<https://www.ics.ie/news/icdl-free-online-courses-covid-19>

<https://www.edx.org/>

<https://www.futurelearn.com/>

<https://www.coursera.org/>

<https://alison.com/>

<https://online-learning.harvard.edu/>

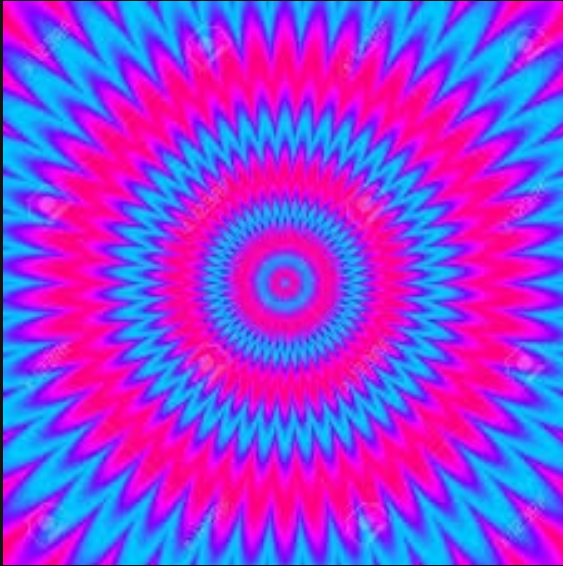
<https://ocw.mit.edu/index.htm>

<http://shawacademy.com>

Volunteering:

<https://www.volunteer.ie/volunteers/find-a-volunteer-role/>

<https://www.gov.ie/en/publication/72694e-helping-in-the-community-during-covid-19/>



Online Resources

- www.dit.ie/careers
- www.gradireland.com
- www.nextstepsupport.org/
- www.prospects.ac.uk
- My Qualification What Next?– every degree programme
- Tailored CVs and Cover Letters
- A-Z resources section on dit.ie/careers

Careers open to all disciplines

- Many graduate vacancies don't require specific degree subjects as possession of a degree is taken as evidence of intellectual ability.
- What is more important to the potential employer is the range of transferable skills and experience you can demonstrate.
- Many graduate training programmes take final year students from a wide range of disciplines, register with the Career Development Centre's Jobscene for a full list of programmes.

<https://tudublin.gradireland.com/unauth>



TU Dublin Jobscene

Please select one of the following options to continue and sign into the system.

Student login and registration



Are you an employer?

Registering your organisation with us and enhance your organisation's profile and visibility within the Institution community.

Organisation sign in



'Paths Into...' Series

The screenshot shows a web browser window with multiple tabs open. The active tab is the TU Dublin website, specifically the 'Resources' page for students and graduates. The page features a dark blue header with the TU Dublin logo and navigation links. Below the header, there is a section titled 'Your Path to Series' which lists various career paths, each preceded by a small blue square icon. The list includes paths to Archaeology, Dentistry, Law, Graduate Entry Medicine, Optometrist, Occupational Therapy, Physiotherapy, Psychology, Pharmacist, Radiography, Speech & Language Therapy, Teaching, and becoming a Vet. The browser's address bar shows the URL 'tudublin.ie/for-students/career-development-centre/students-and-graduates/resources/'. The Windows taskbar at the bottom shows the time as 11:52 on 27/11/2020.

Mail - Jenni x Mail - Built x commercial x Real Estate x Property au x Commercial x Conversion x Accounting x Resources x

tudublin.ie/for-students/career-development-centre/students-and-graduates/resources/

TU DUBLIN
TECHNOLOGICAL UNIVERSITY DUBLIN

Courses For Students For Staff Library Contact Us Search

STUDY RESEARCH CONNECT EXPLORE **CAO HUB**

Writing a personal statement

Your Path to Series

- Your path to Archaeology
- Your Path to Dentistry
- Your path to Law
- Your path to Graduate Entry Medicine
- Your path to becoming an Optometrist
- Your path to Occupational Therapy
- Your path to Physiotherapy
- Your path to Psychology
- Your path to being a Pharmacist
- Your path to Radiography
- Your path to Speech & Language Therapy
- Your path to Teaching
- Your Path to becoming a Vet

Early Childhood Ed....pdf Show all x

11:52 27/11/2020

Some examples of career areas open to students of all disciplines:

- Teaching & Education
- Financial Services & Accounting
- Marketing, Advertising and PR
- Retail, Sales and Customer Service
- Banking, insurance and financial services
- Charities and voluntary sector
- Fund management / administration and investment banking
- Human resources, recruitment and training
- Management consulting
- Management, business and administration
- Media and publishing
- Public sector and civil service
- Social, community and youth

For further information see: www.gradireland.com/career-sectors

*** In some cases, further study may apply.

Career Development Centre

[Students and Graduates](#)[Career Coaching](#)[Careers Fairs and Events](#)[Employers](#)[Work Placements](#)[Job Opportunities](#)[Career Development Learning](#)[Further Study](#)[Contact us](#)

Job Opportunities

The TU Dublin Career Development Centre maintains links with a wide range of employers. All students have access to [Jobscene](#) where you can have the latest job postings and graduate programmes targeting TU Dublin students sent directly to your registered email.

We also organise employer visits/virtual talks and Careers Fairs (inc. Virtual Careers Fairs). Please check your TU Dublin email regularly for updates on these events.

Also, check out our list of some Organisations currently recruiting for their [Graduate Programmes](#).

Please see the tiny url of Grad opportunities below.

- <https://tinyurl.com/TUgradrogs2020>

<https://www.tudublin.ie/for-students/career-development-centre/>



Jennifer McConnell/Carol Kelehan, Career Coaches

bevcareers@tudublin.ie

<https://www.tudublin.ie/for-students/career-development-centre/>