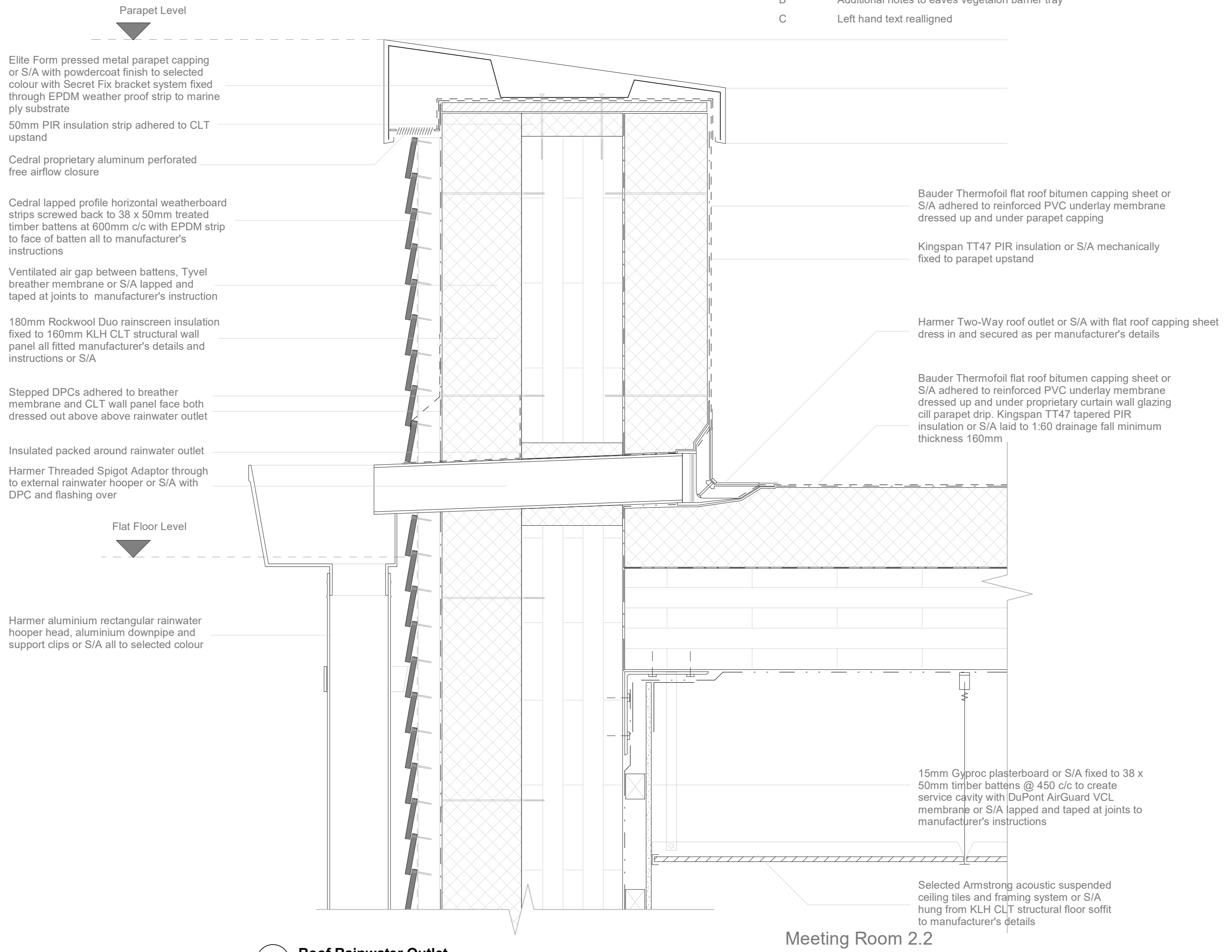


REVISED SUBMISSION

Revisions	Description	Date
A	Insulation around rainwater pipe penetration	16-12-20
B	Additional notes to eaves vegetaion barrier tray	16-12-20
C	Left hand text realligned	16-12-20



01 Roof Rainwater Outlet
1:5

Meeting Room 2.2

Bauder Extensive Green Roof System or S/A comprising of 25mm Xero-Flor-XF118 vegetation layer, 80mm extensive substrate, filter fleece polypropylene membrane, 40mm DSE40 drainage layer, root protection layer, PE-Foil slip layer, moisture barrier, 160mm XPS insulation, vapour control layer all to manufacturer's specification

200 x 120mm Glulam timber purlin on fitted to 1100x300mm Glulam structural beam all to structural engineer's details

Dynamik engineered timber acoustic panels or S/A with perforations fitted to timber battens using propriety secret clipping system on black acoustic fleece over stud work. Provide 7mm spacing shadow gap between pattern. Panel layout to future details.

SIP Energy loadbearing insulated wall panels with 15mm OSB/3 inner and outer layer and 230mm XPS insulation core with 45 x 230mm treated timber end plate all to manufacturer's details

Sports Hall

02 North Elevation Eaves Details
1:5

C-A

Bauder AL150 aluminium edge / drainage trim or S/A with 80mm min. depth vegetation barrier with Bauder capping sheet run under and up at eaves

Bauder aluminum vegetation barrier continues tray dressed up and over AL150 drainage edge and wrapped and sealed to zinc eaves
VMZinc or S/A standing seam zinc on vent mesh with hidden fixing by specialist with marine ply substrate for clad fixing. Ensure adequate air-gap and through ventilation. Provide insect mesh at air gaps.

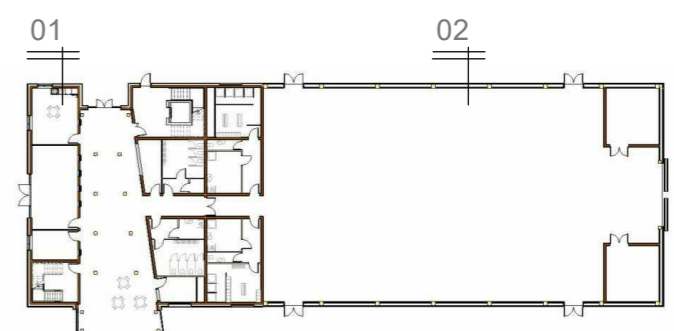
Airtightness tape applied to roof deck soffit and Gutex wood fibre board junction

Rockwool insulation packed into void to continue thermal line

Timber frame lattice eaves projection with marine ply substrate for clad fixing to structural engineer's details.

Expanded aluminum insect mesh to allow airflow

In-Rock fibre cement board on Hilti facade mounting aluminium carrier angles with thermal break packers with 50mm ventilated gap to 50mm Gutex mineral wall slab on Tyvek breather membrane lapped and taped and junctions and joints



Project
CLONGRIFFIN COMMUNITY CENTRE, MAIN STREET, CLONGRIFFIN, Co. DUBLIN

Title
TYPICAL PARAPET AND EAVES DETAILS

Drawn by
Aidan McKenna

Project number
DT175-3-TECH 3100

Date
December 2020

Checked by
TDS Staff



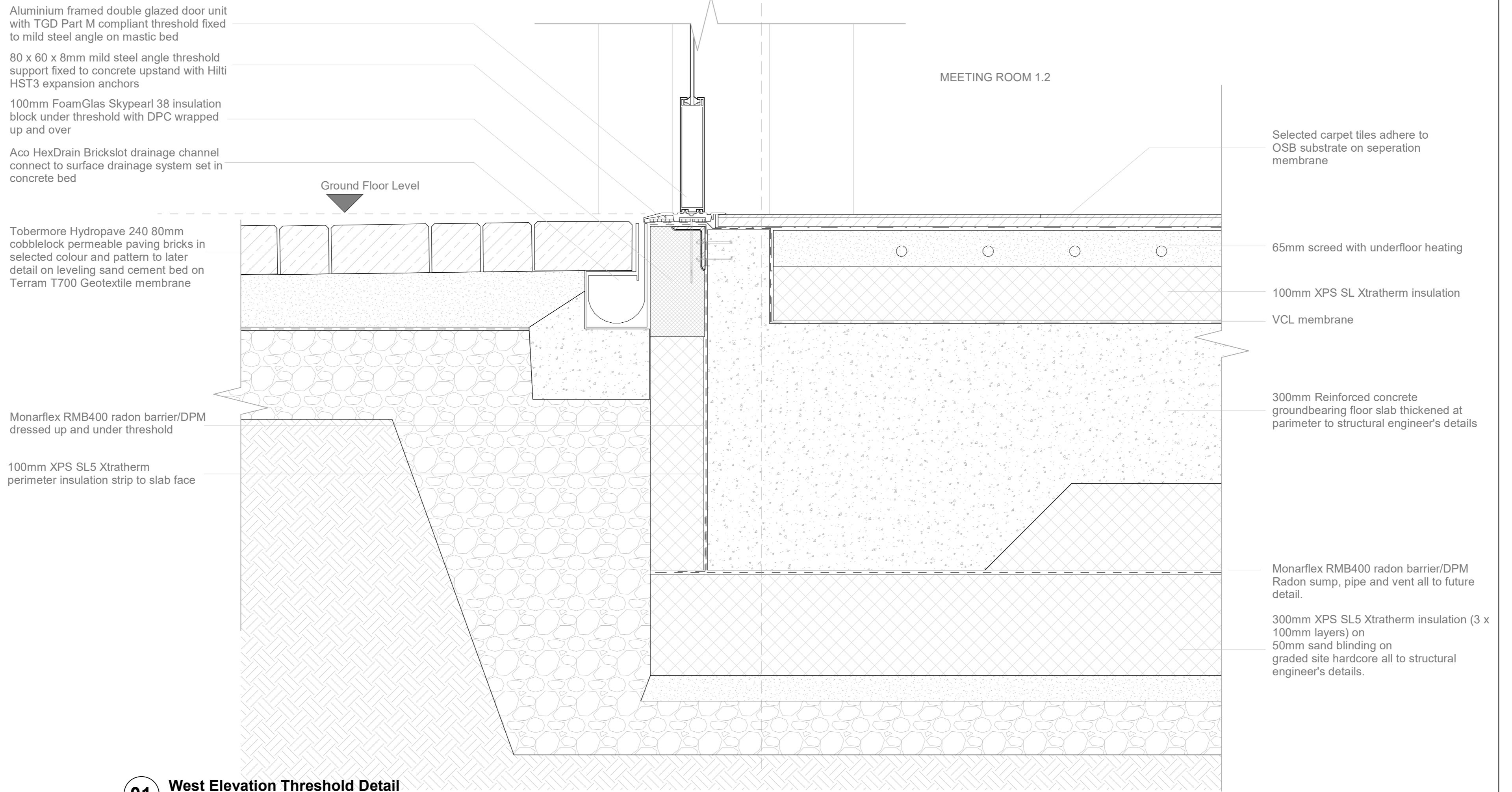
Submitted to
DT175 - 3

Sheet no.
P006-TDS3-P6-A1-301

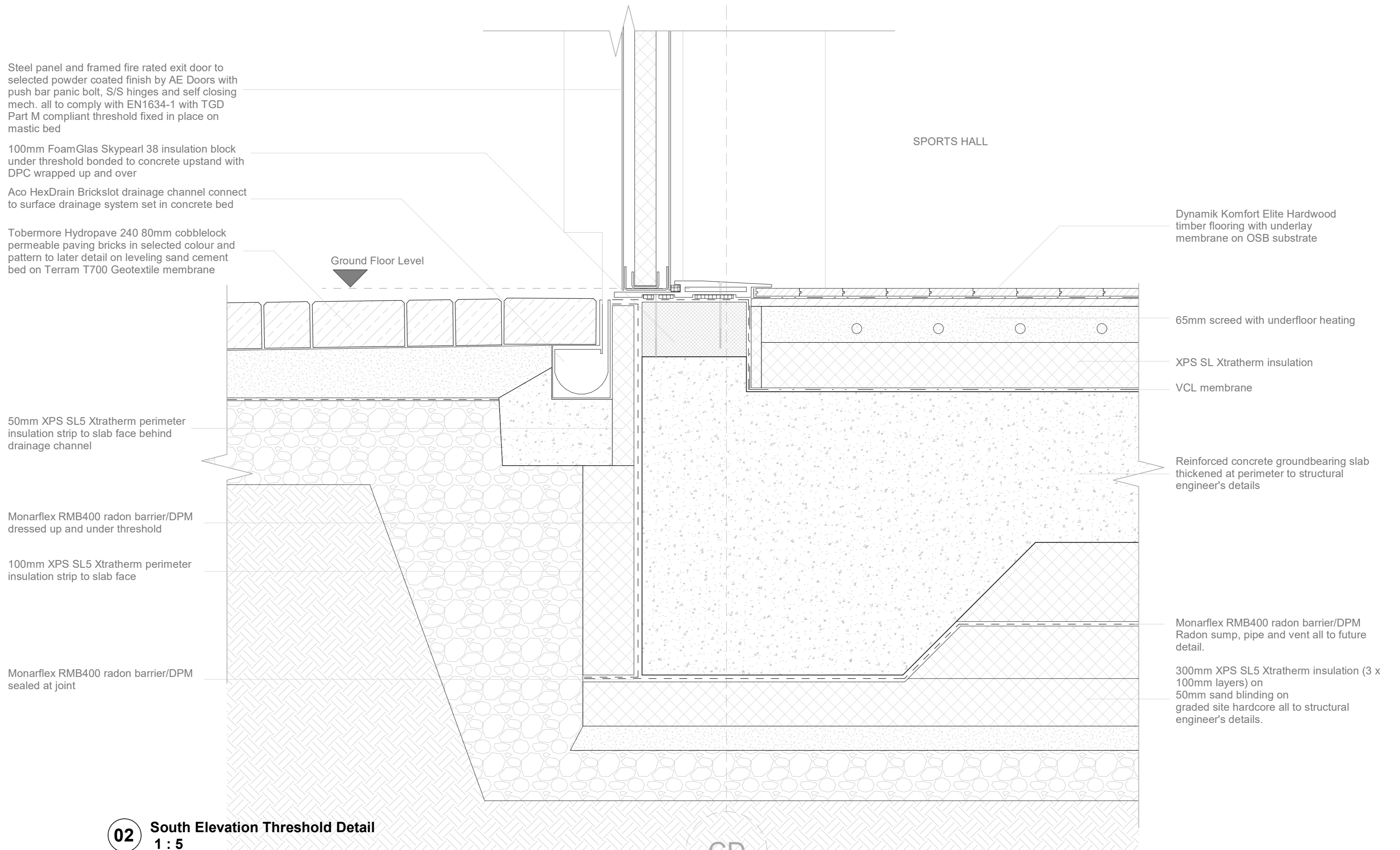
Scale
1 : 5

REVISED SUBMISSION

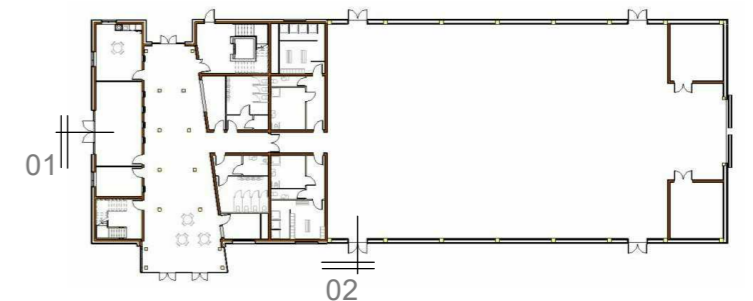
Revisions	Description	Date
A	Amendments to south wall foundation and insulation	16-12-20
B	Left hand text realigned	16-12-20



01 West Elevation Threshold Detail
1:5



02 South Elevation Threshold Detail
1:5



Project
CLONGRIFFIN COMMUNITY CENTRE, MAIN STREET, CLONGRIFFIN, Co. DUBLIN

Title
TYPICAL DOOR THRESHOLD DETAILS

Drawn by
Aidan McKenna

Project number
DT175-3-TECH 3100

Date
December 2020

Checked by
TDS Staff



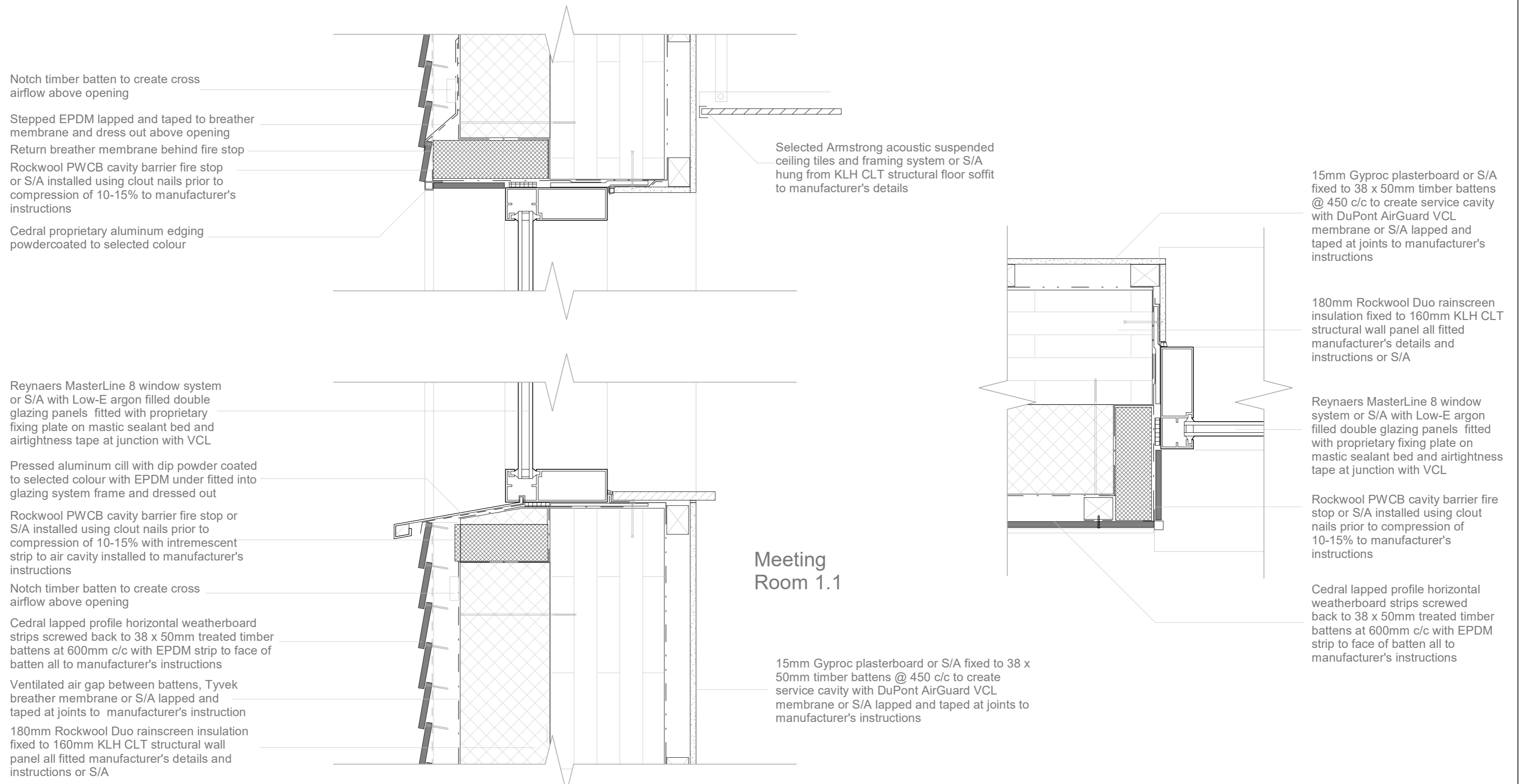
Submitted to
DT175 - 3

Sheet no.
P006-TDS3-P6-A1-302

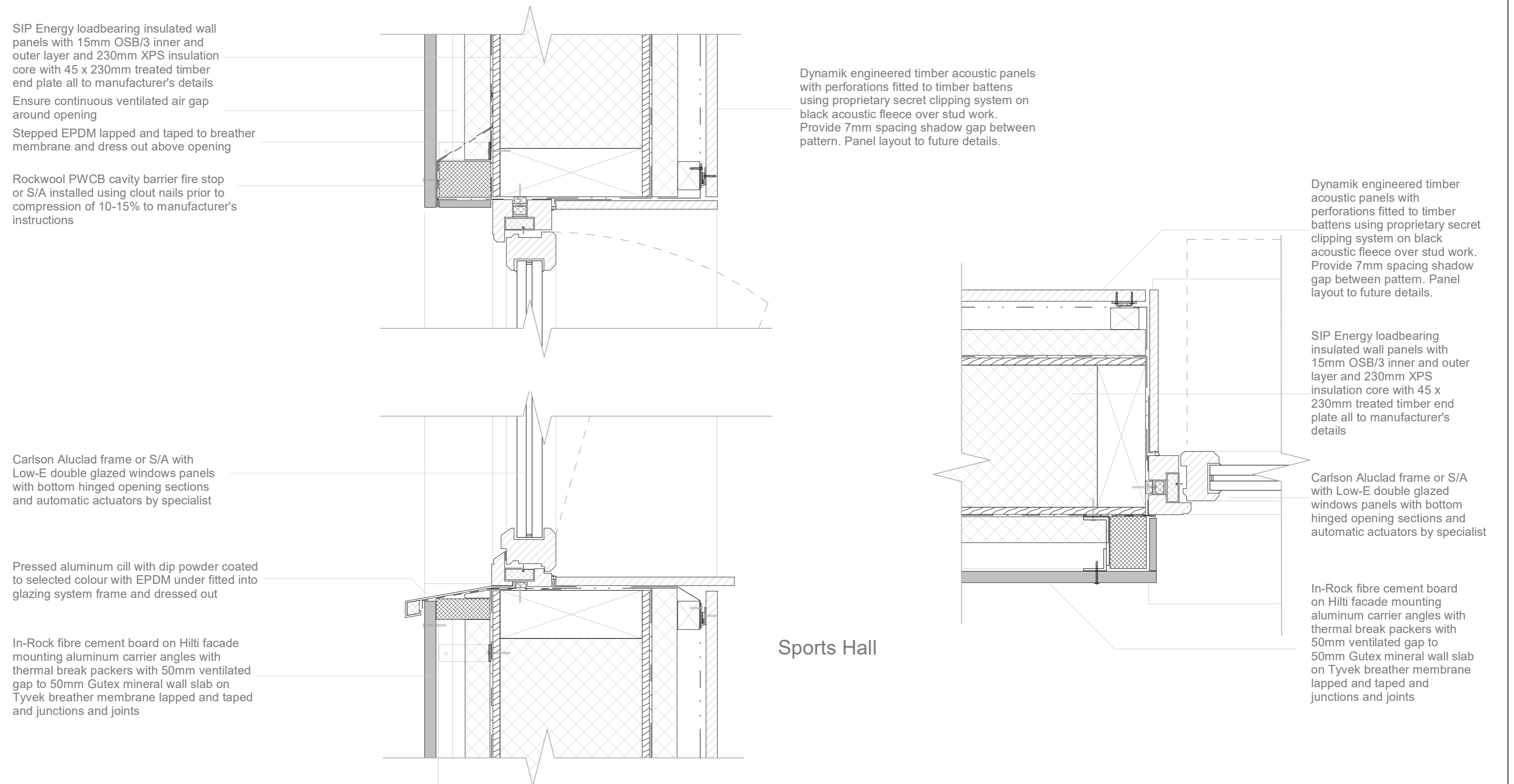
Scale
1:5

REVISED SUBMISSION

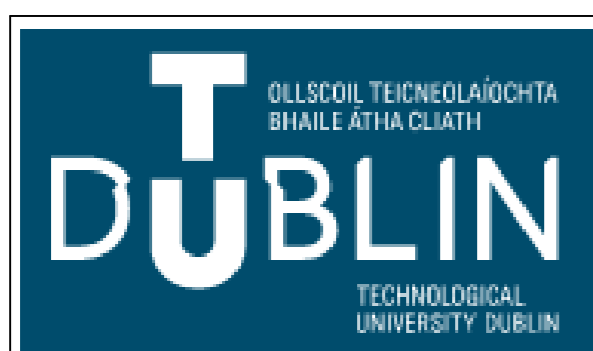
Revisions	Description	Date
A	Amendments to fire stopping around west elevation opening	16-12-20
B	Left hand text realigned	16-12-20



1 West Elevation Window Cill / Head / Jamb
1 : 5



2 South Elevation Window Cill / Head / Jamb
1 : 5



Project
CLONGRIFFIN COMMUNITY CENTRE, MAIN STREET, CLONGRIFFIN, Co. DUBLIN

Title
TYPICAL WINDOW DETAILS

Drawn by
Aidan McKenna

Project number
DT175-3-TECH 3100

Date
December 2020

Checked by
TDS Staff



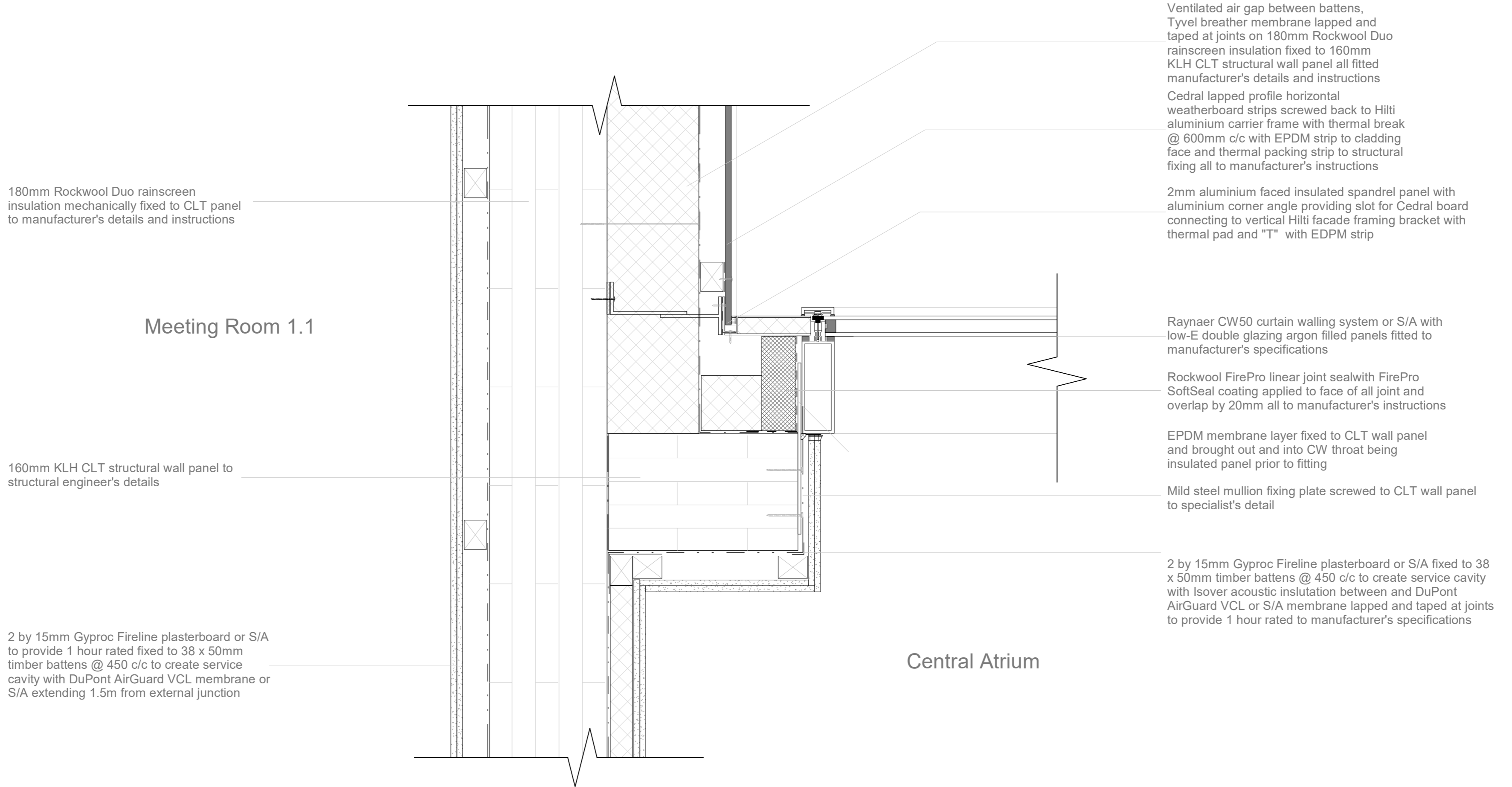
Submitted to
DT175 - 3

Sheet no.
P006-TDS3-P6-A1-303

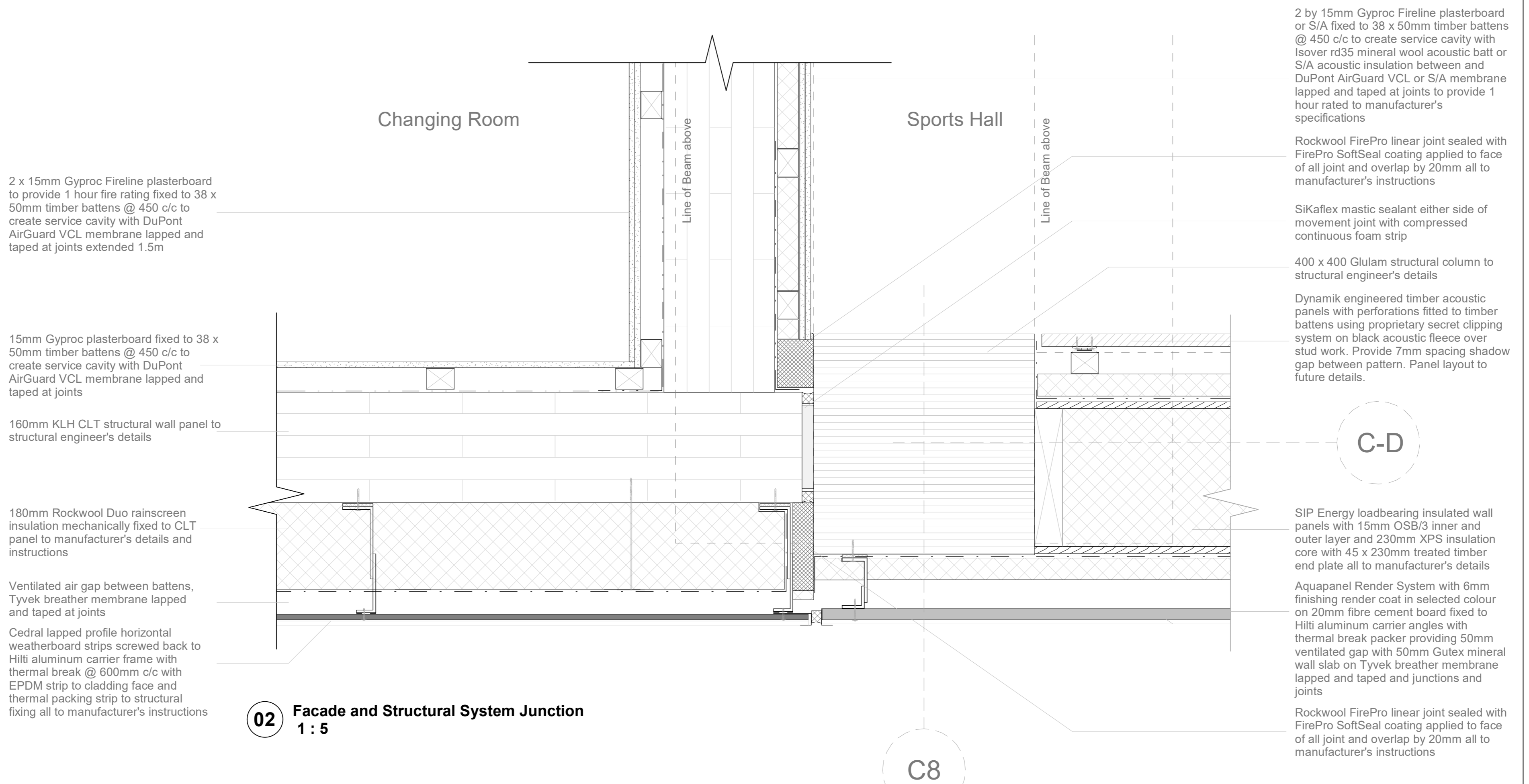
Scale
1 : 5

REVISED SUBMISSION

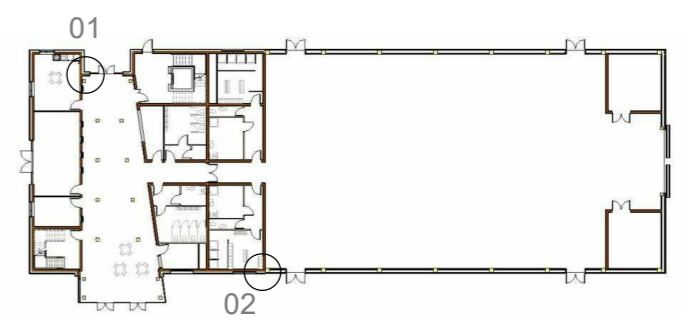
Revisions	Description	Date
A	Amendments to various notes	16-12-20
B	Left hand text realigned	16-12-20



01 North Entrance Curtain Walling Junction
1 : 5



02 Facade and Structural System Junction
1 : 5



Project
CLONGRIFFIN COMMUNITY CENTRE, MAIN STREET, CLONGRIFFIN, Co. DUBLIN

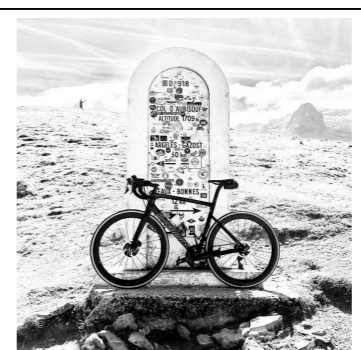
Title
FACADE JUNCTION DETAILS

Drawn by
Aidan McKenna

Project number
DT175-3-TECH 3100

Date
December 2020

Checked by
TDS Staff



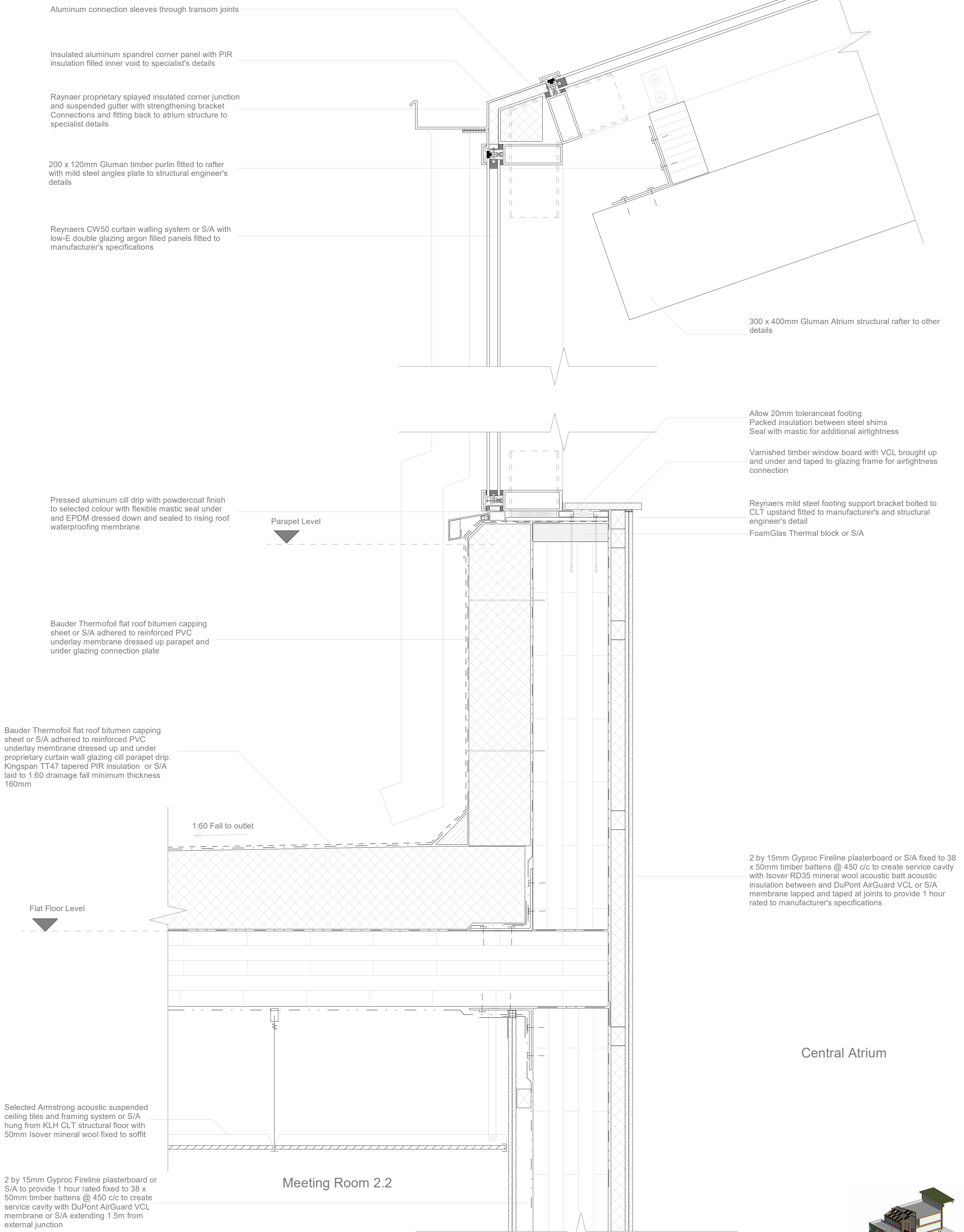
Submitted to
DT175 - 3

Sheet no.
P006-TDS3-P6-A1-304

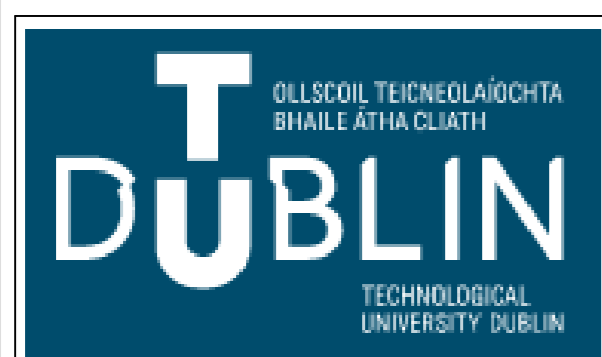
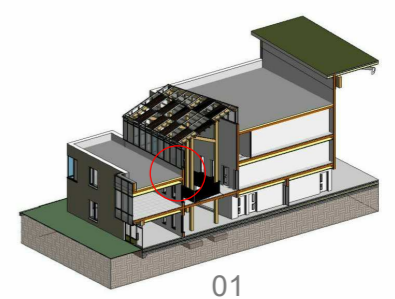
Scale
1 : 5

REVISED SUBMISSION

Revisions	Description	Date
A	Amendments to various notes	16-12-20
B	Left hand text realigned	16-12-20



01 Upstand to Curtain Walling Junction
1 : 5



Project	CLONGRIFFIN COMMUNITY CENTRE, MAIN STREET, CLONGRIFFIN, Co. DUBLIN
Title	FLAT ROOF UPSTAND TO ATRIUM CURTAIN WALLING

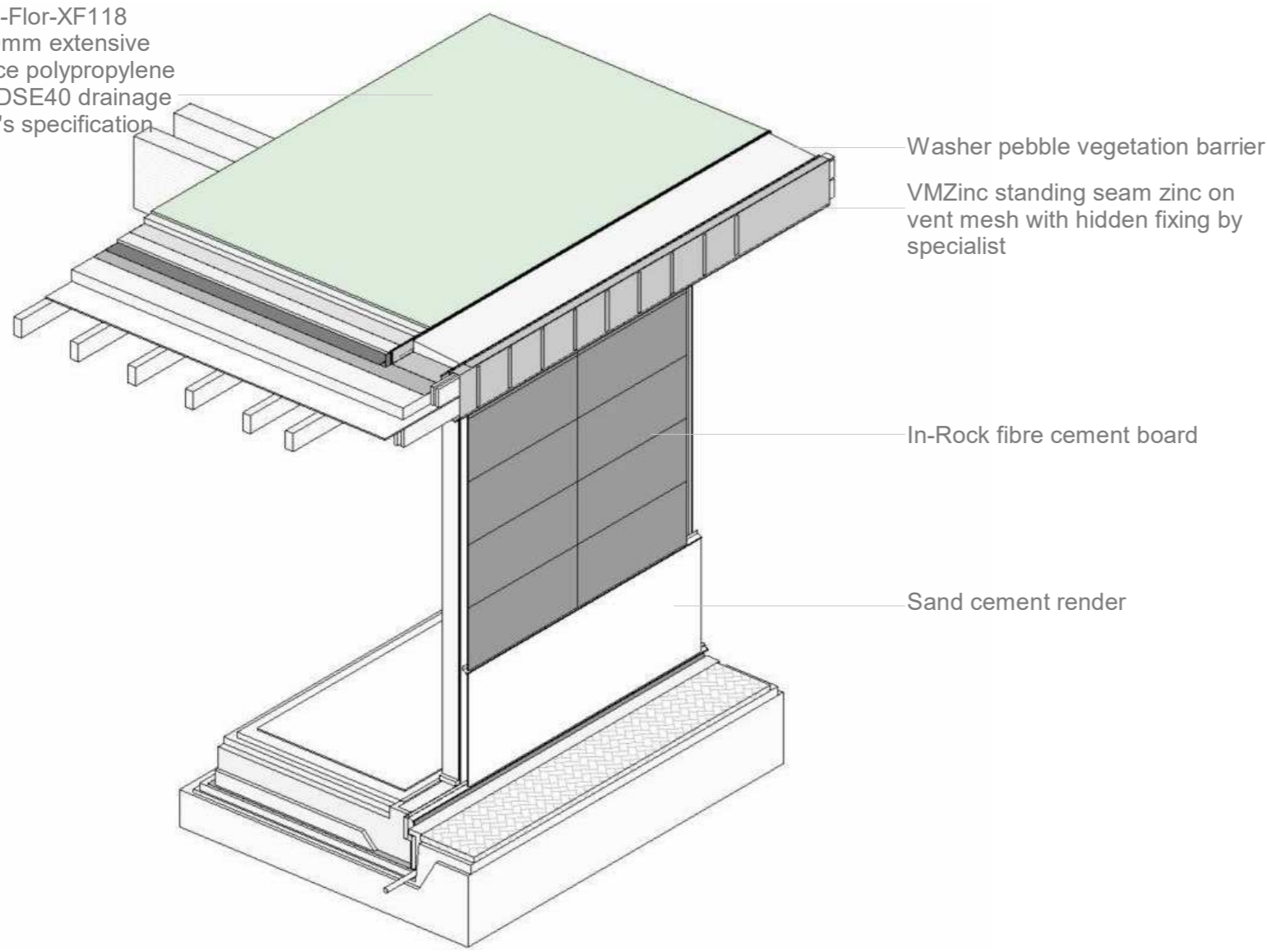
Drawn by	Aidan McKenna
Project number	DT175-3-TECH 3100
Date	December 2020
Checked by	TDS Staff



Submitted to	DT175 - 3
Sheet no.	P006-TDS3-P6-A1-305
Scale	1 : 5

Revisions	Description	Date

Bauder 25mm Xero-Flor-XF118 vegetation layer, 80mm extensive substrate, filter fleece polypropylene membrane, 40mm DSE40 drainage layer, manufacturer's specification

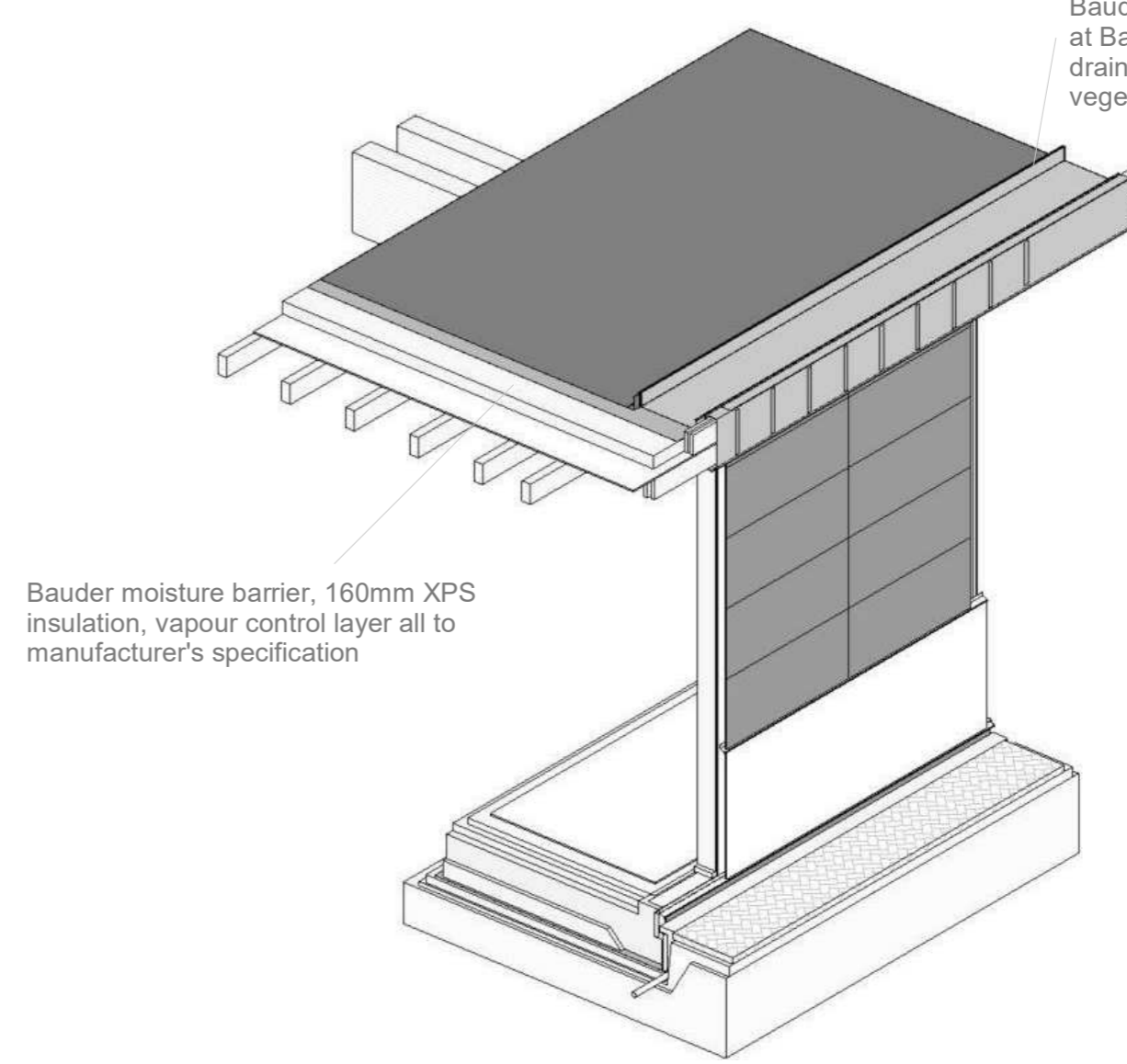


Washer pebble vegetation barrier
VMZinc standing seam zinc on vent mesh with hidden fixing by specialist

In-Rock fibre cement board

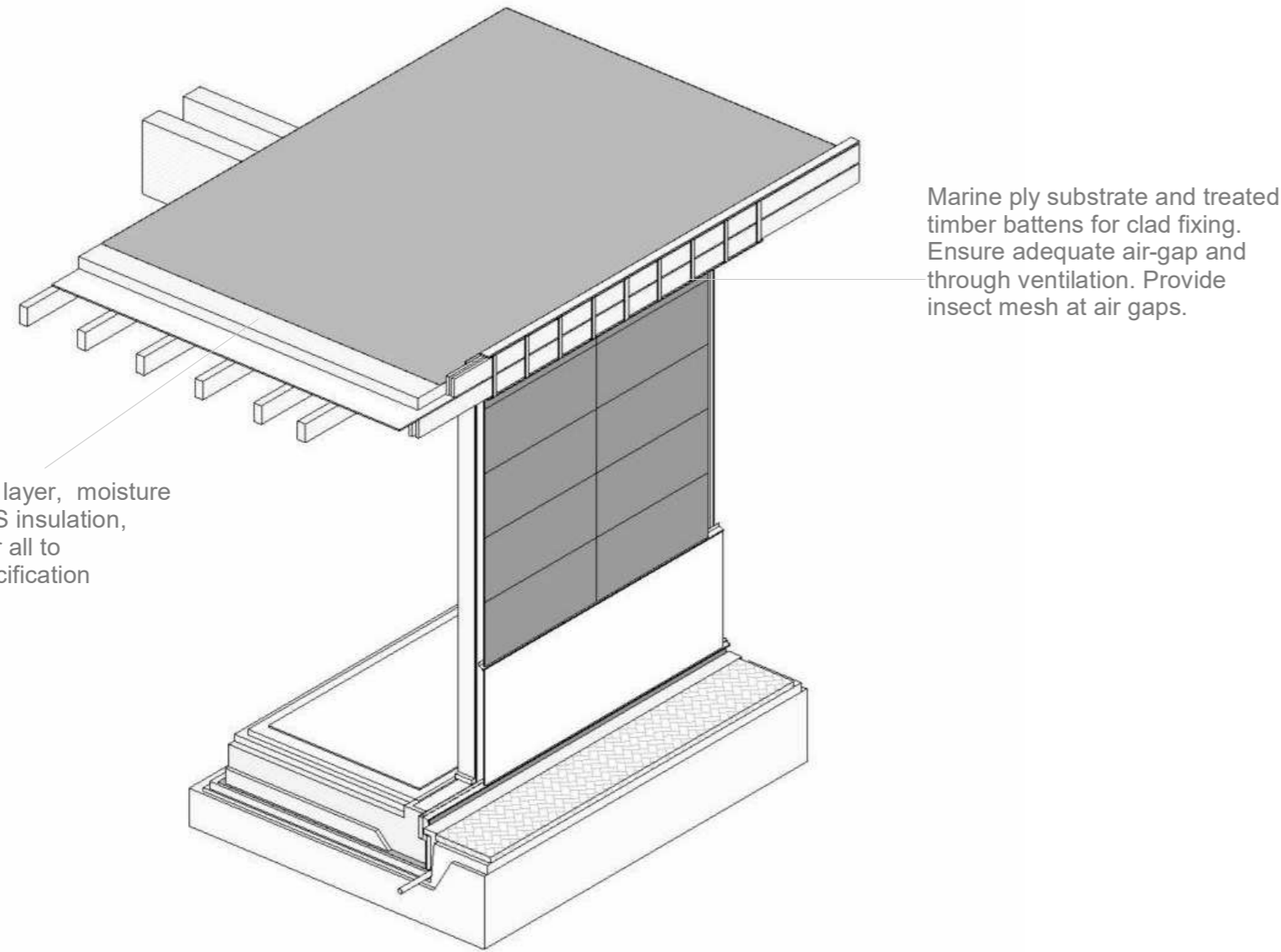
Sand cement render

Bauder root protection layer dressed up at Bauder AL150 aluminium edge / drainage trim with 80mm min. depth vegetation barrier



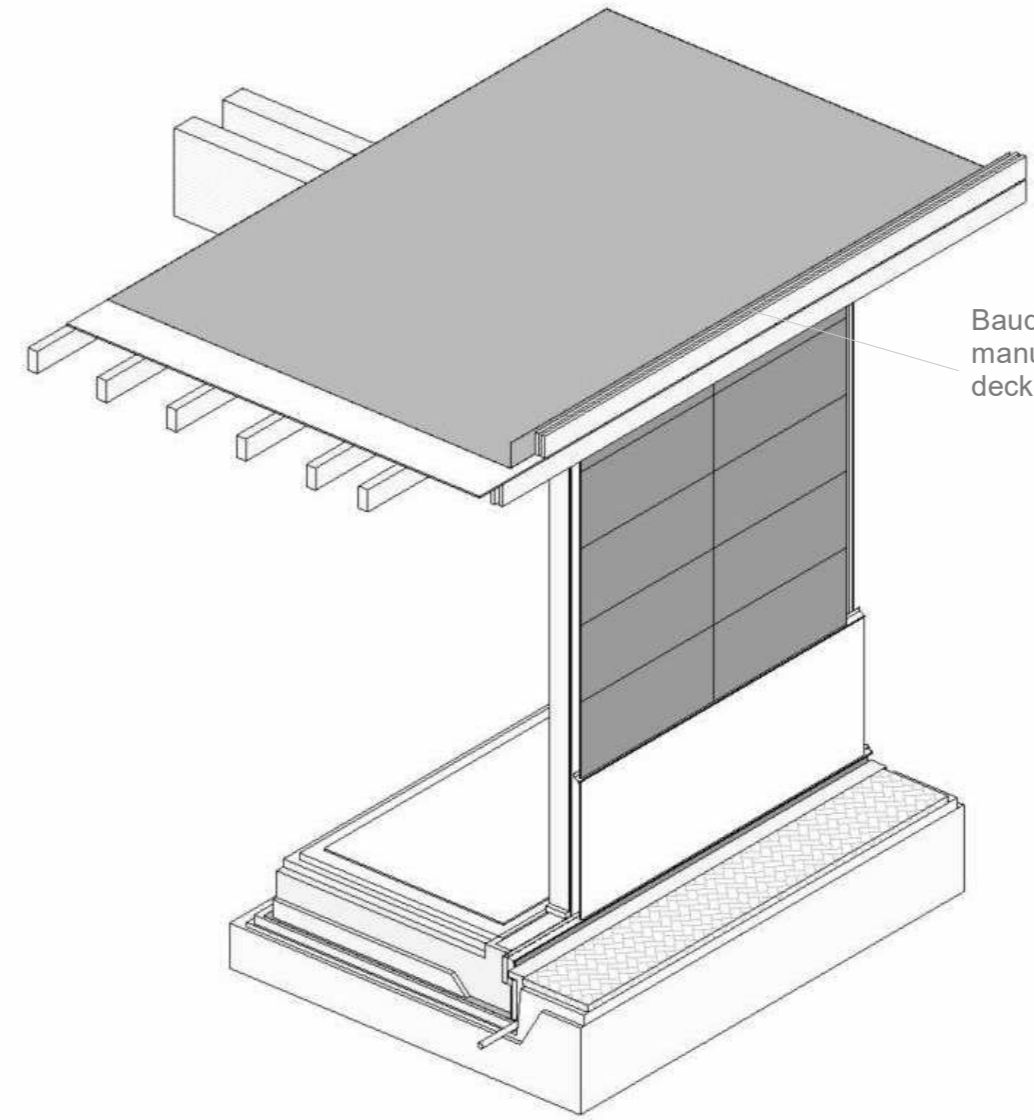
Bauder moisture barrier, 160mm XPS insulation, vapour control layer all to manufacturer's specification

Bauder PE-Foil slip layer, moisture barrier, 160mm XPS insulation, vapour control layer all to manufacturer's specification

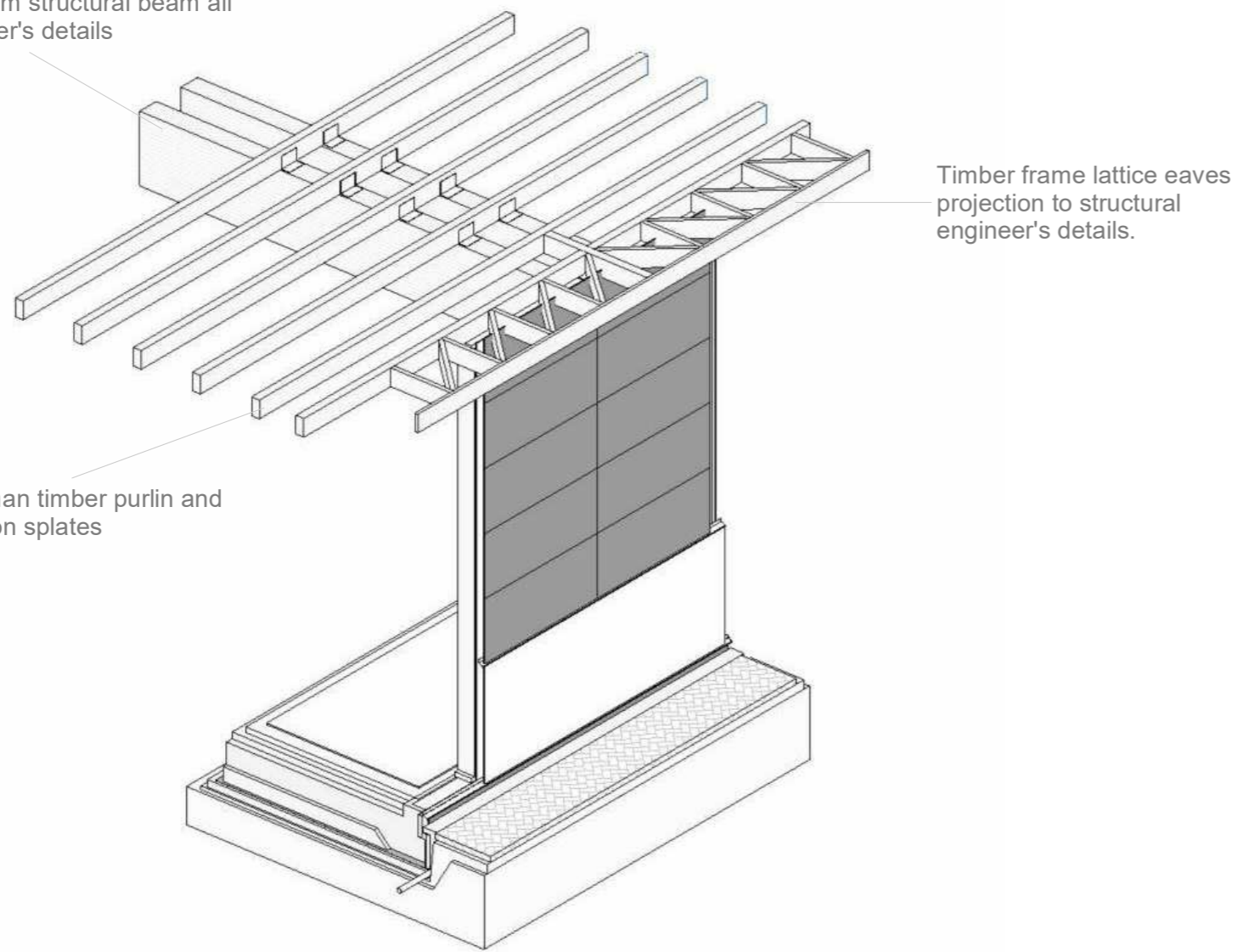


Marine ply substrate and treated timber battens for clad fixing. Ensure adequate air-gap and through ventilation. Provide insect mesh at air gaps.

Bauder vapour control layer to manufacturer's specification on OSB deck and timber eaves upstand

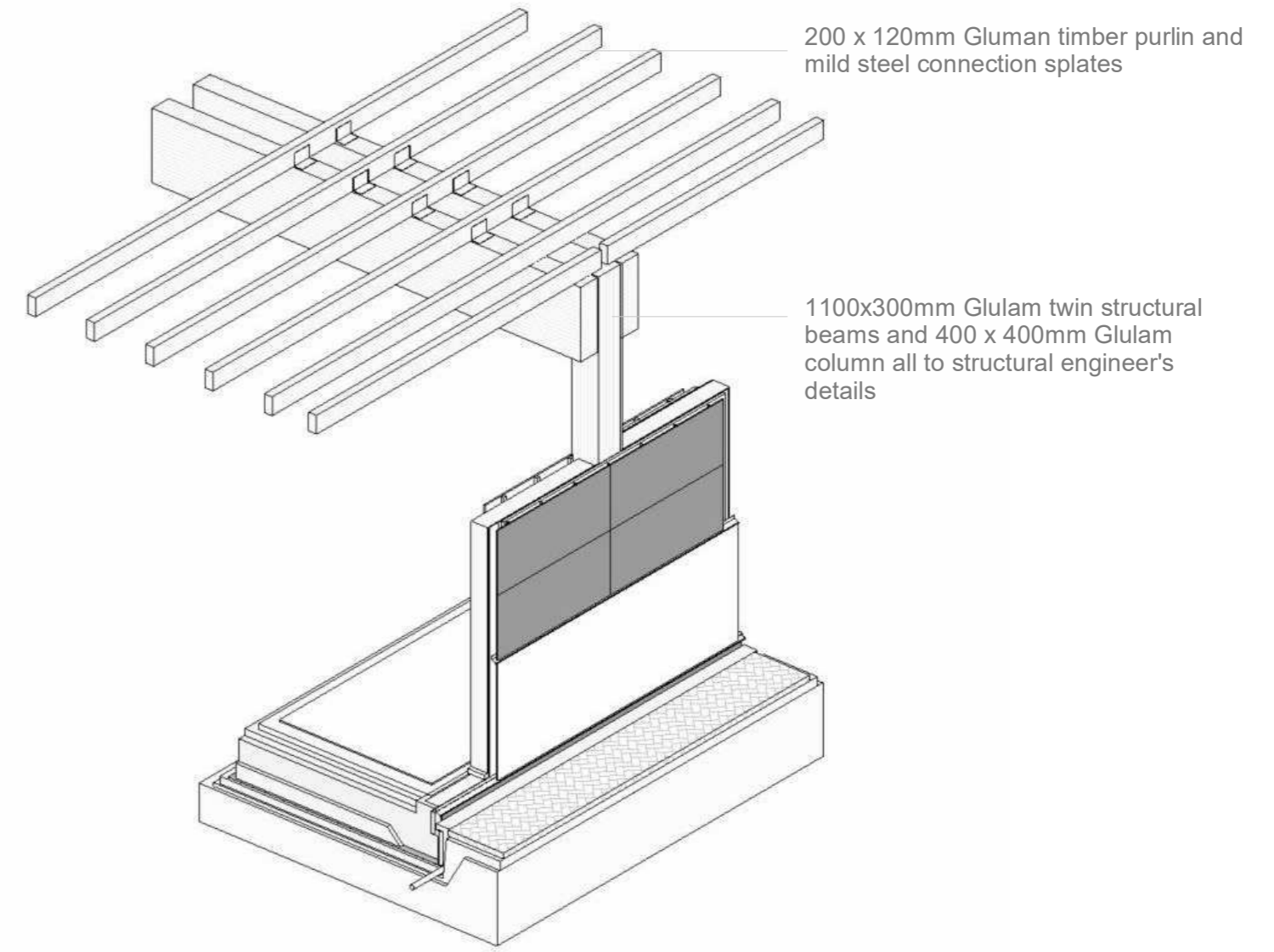


1100x300mm Glulam structural beam all to structural engineer's details



Timber frame lattice eaves projection to structural engineer's details.

200 x 120mm Glulam timber purlin and mild steel connection splates

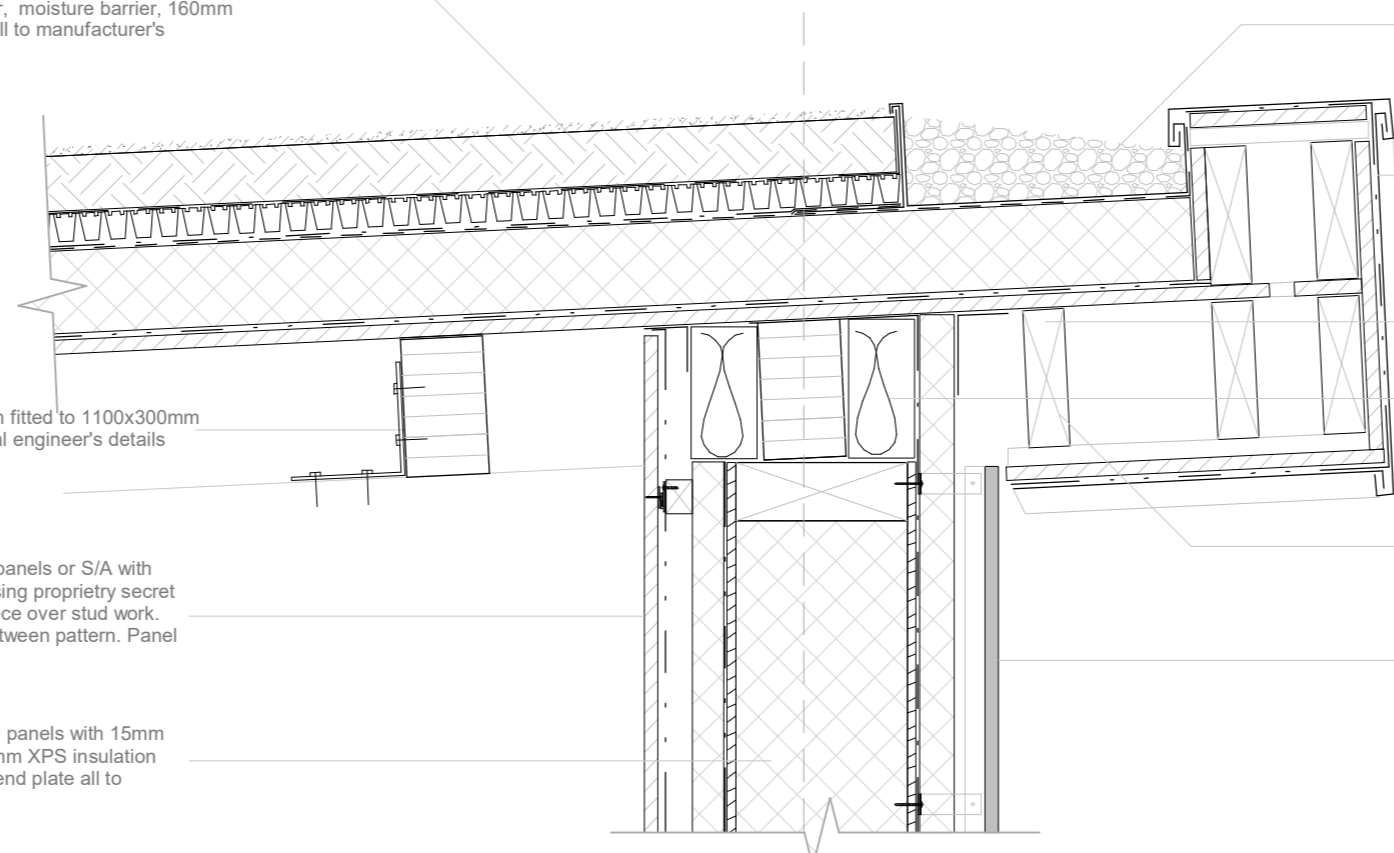


200 x 120mm Glulam timber purlin and mild steel connection splates

1100x300mm Glulam twin structural beams and 400 x 400mm Glulam column all to structural engineer's details

Bauder Extensive Green Roof System or S/A comprising of 25mm Xero-Flor-XF118 vegetation layer, 80mm extensive substrate, filter fleece polypropylene membrane, 40mm DSE40 drainage layer, root protection layer, PE-Foil slip layer, moisture barrier, 160mm XPS insulation, vapour control layer all to manufacturer's specification

C-A



Bauder AL150 aluminium edge / drainage trim or S/A with 80mm min. depth vegetation barrier with Bauder capping sheet run under and up at eaves. Washer pebble vegetation barrier

VMZinc or S/A standing seam zinc on vent mesh with hidden fixing by specialist with marine ply substrate for clad fixing. Ensure adequate air-gap and through ventilation. Provide insect mesh at air gaps.

Airtightness tape applied to roof deck soffit and Gutex wood fibre board junction

PIR insulation packed into void to continue thermal line

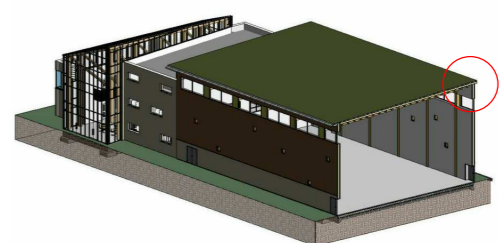
Timber frame lattice eaves projection with marine ply substrate for clad fixing to structural engineer's details.

In-Rock fibre cement board on Hilli facade mounting aluminium carrier angles with thermal break packers with 50mm ventilated gap to 50mm Gutex mineral wool slab on Tyvek breather membrane lapped and taped at junctions and joints

200 x 120mm Glulam timber purlin on fitted to 1100x300mm Glulam structural beam all to structural engineer's details

Dynamik engineered timber acoustic panels or S/A with perforations fitted to timber battens using proprietary secret clipping system on black acoustic fleece over stud work. Provide 7mm spacing shadow gap between pattern. Panel layout to future details.

SIP Energy loadbearing insulated wall panels with 15mm OSB/3 inner and outer layer and 230mm XPS Insulation core with 45 x 230mm treated timber end plate all to manufacturer's details

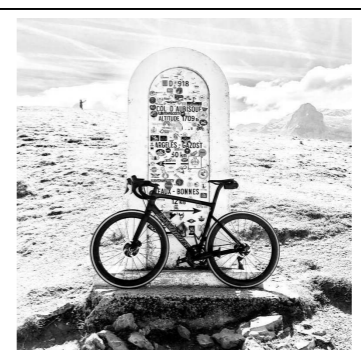


01 North Elevation Eaves Details.
1 : 10



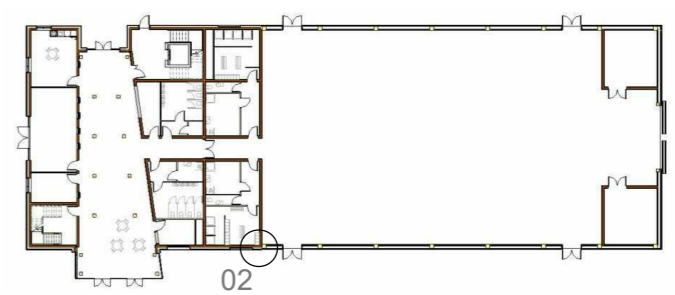
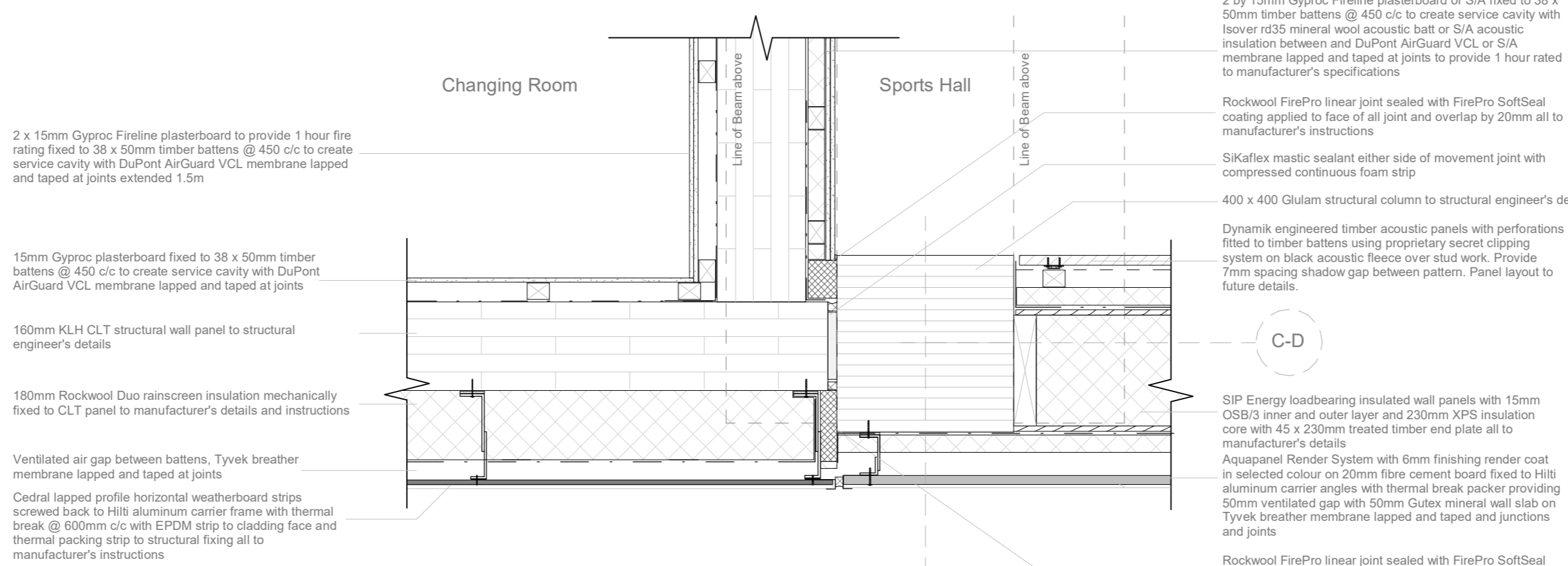
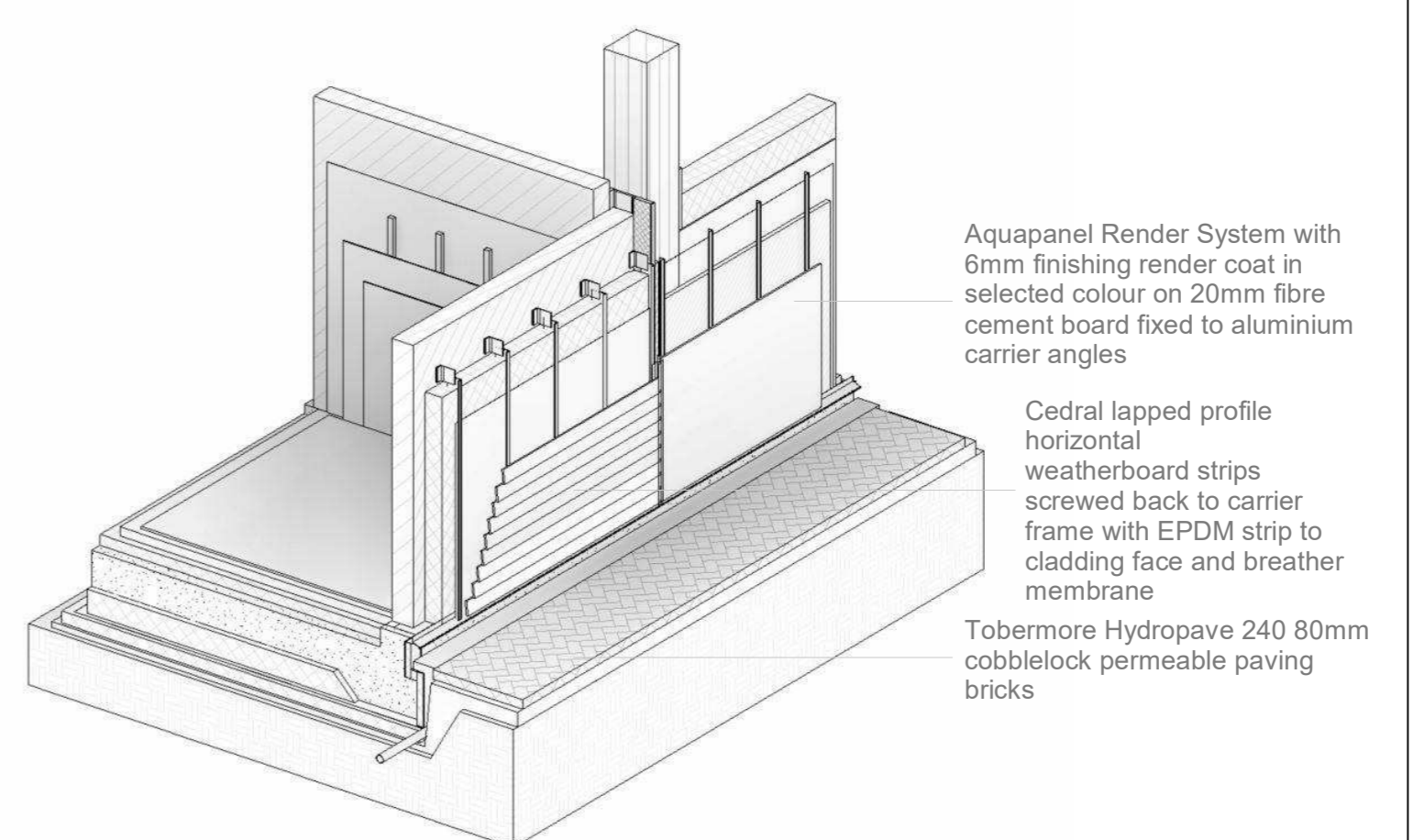
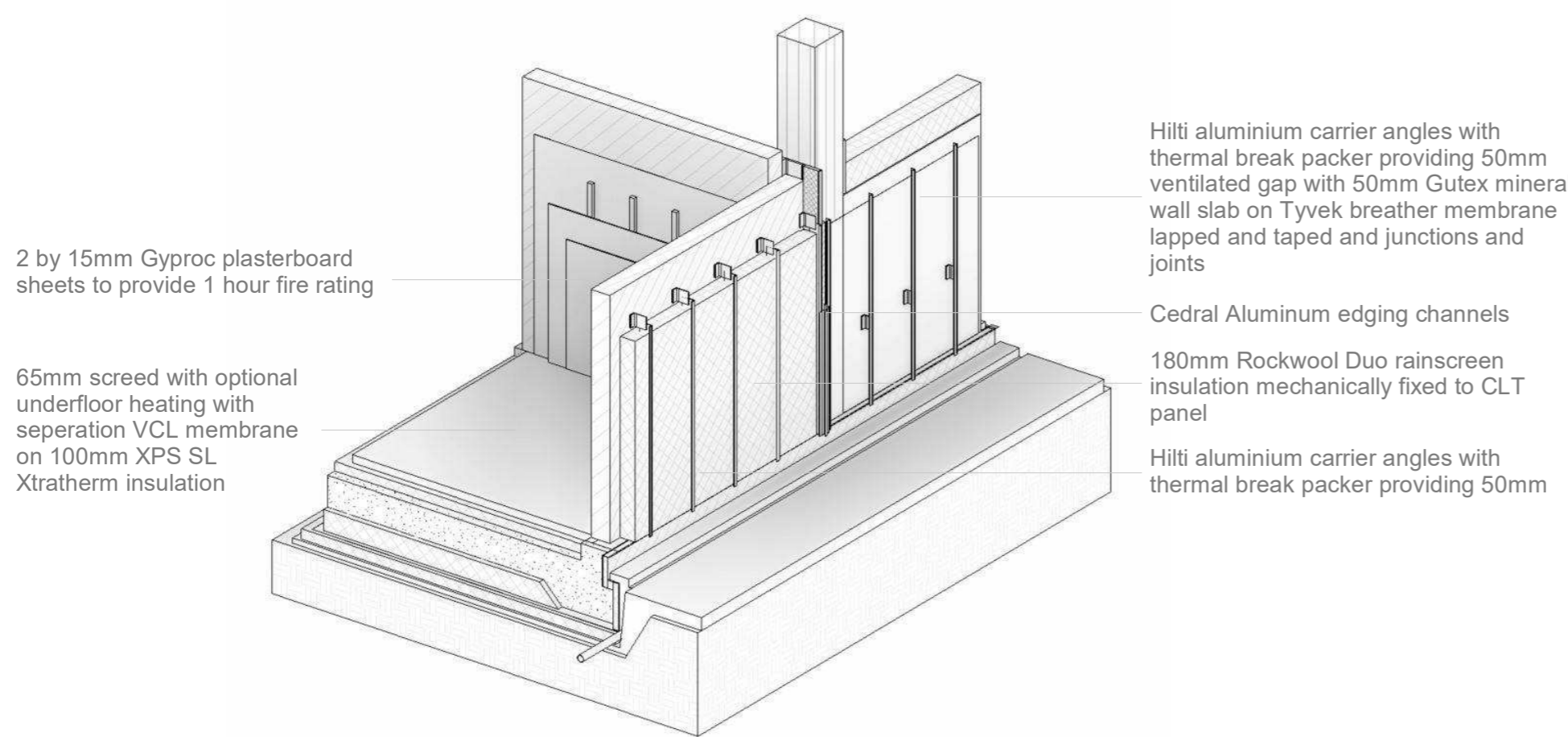
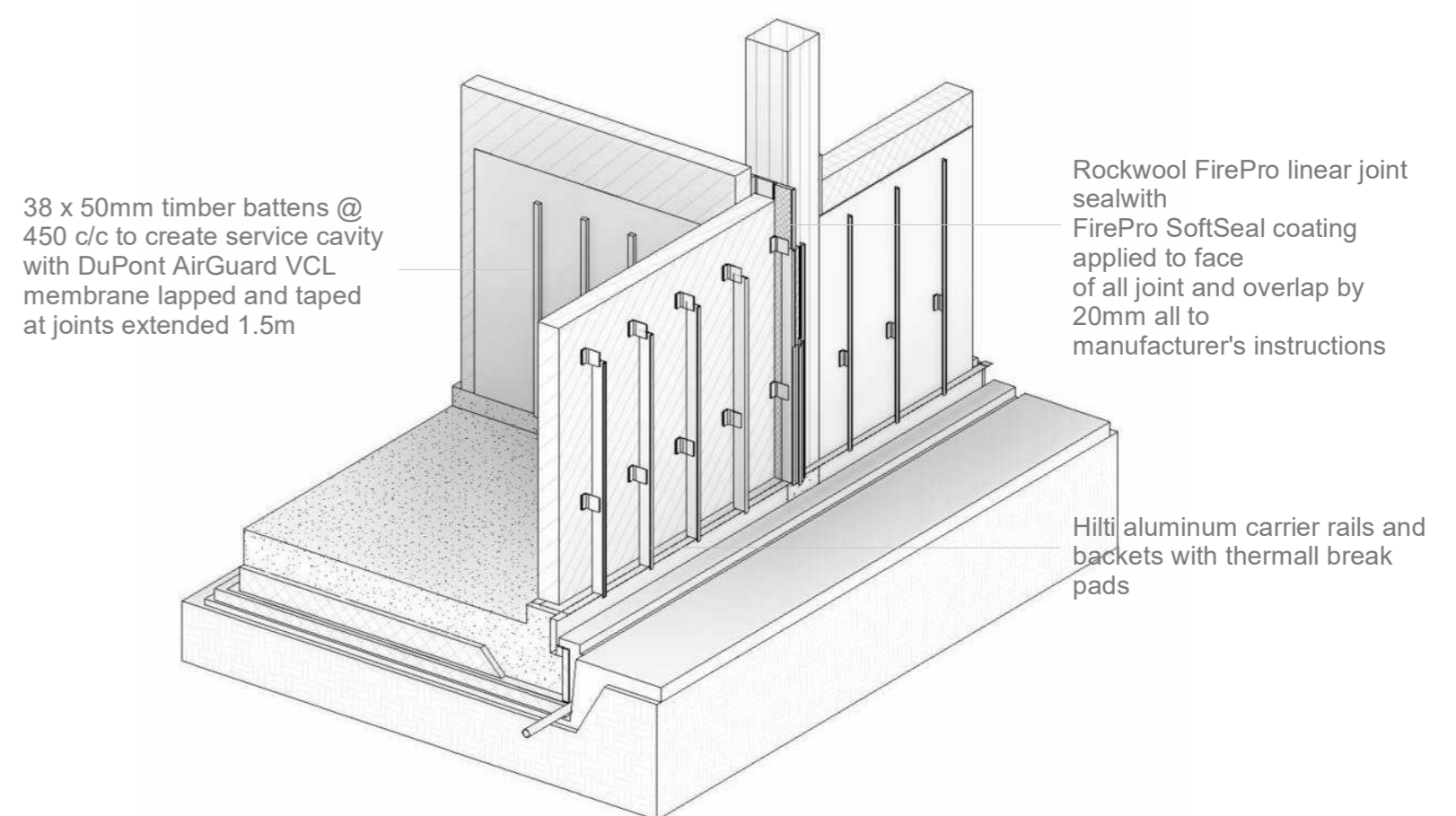
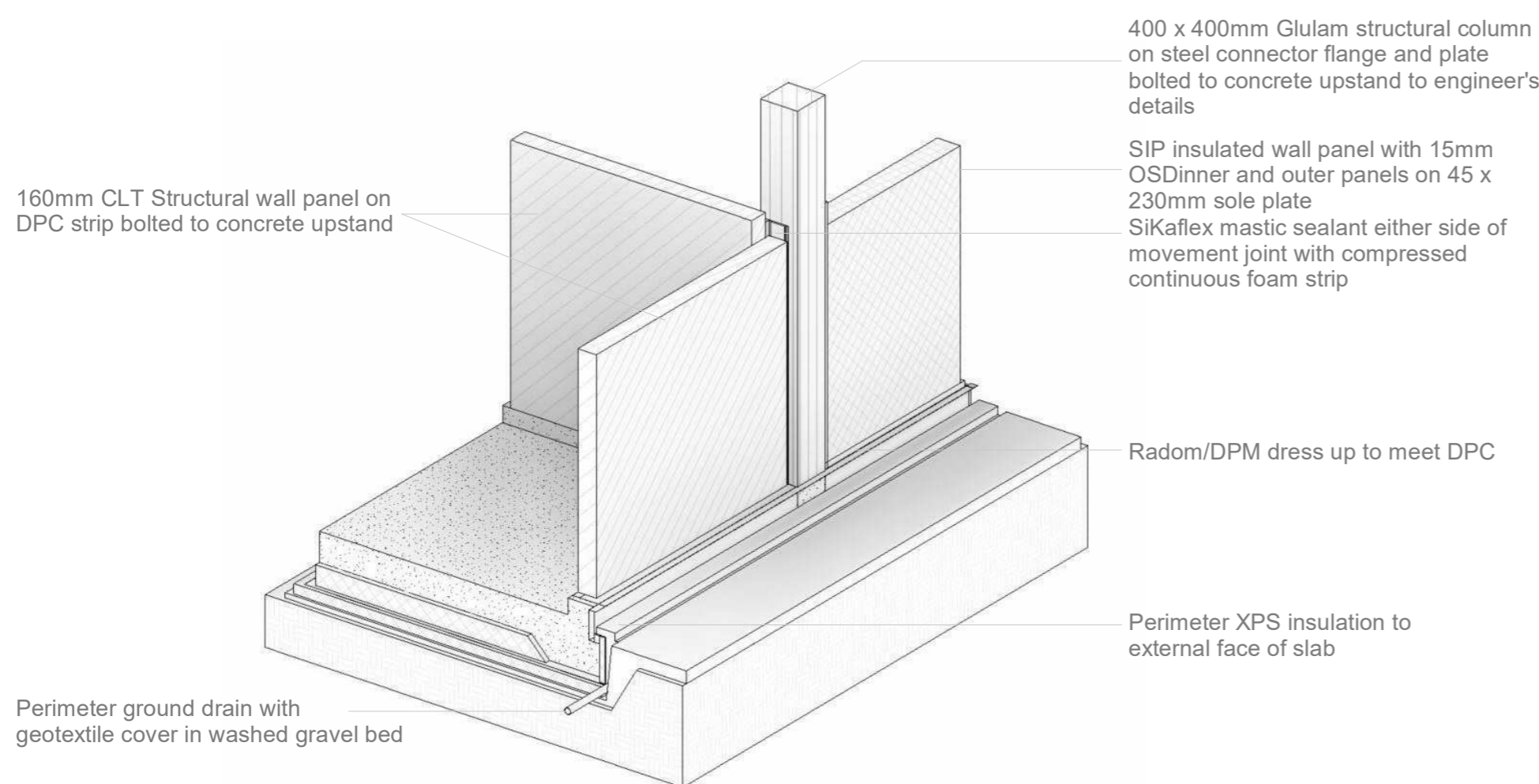
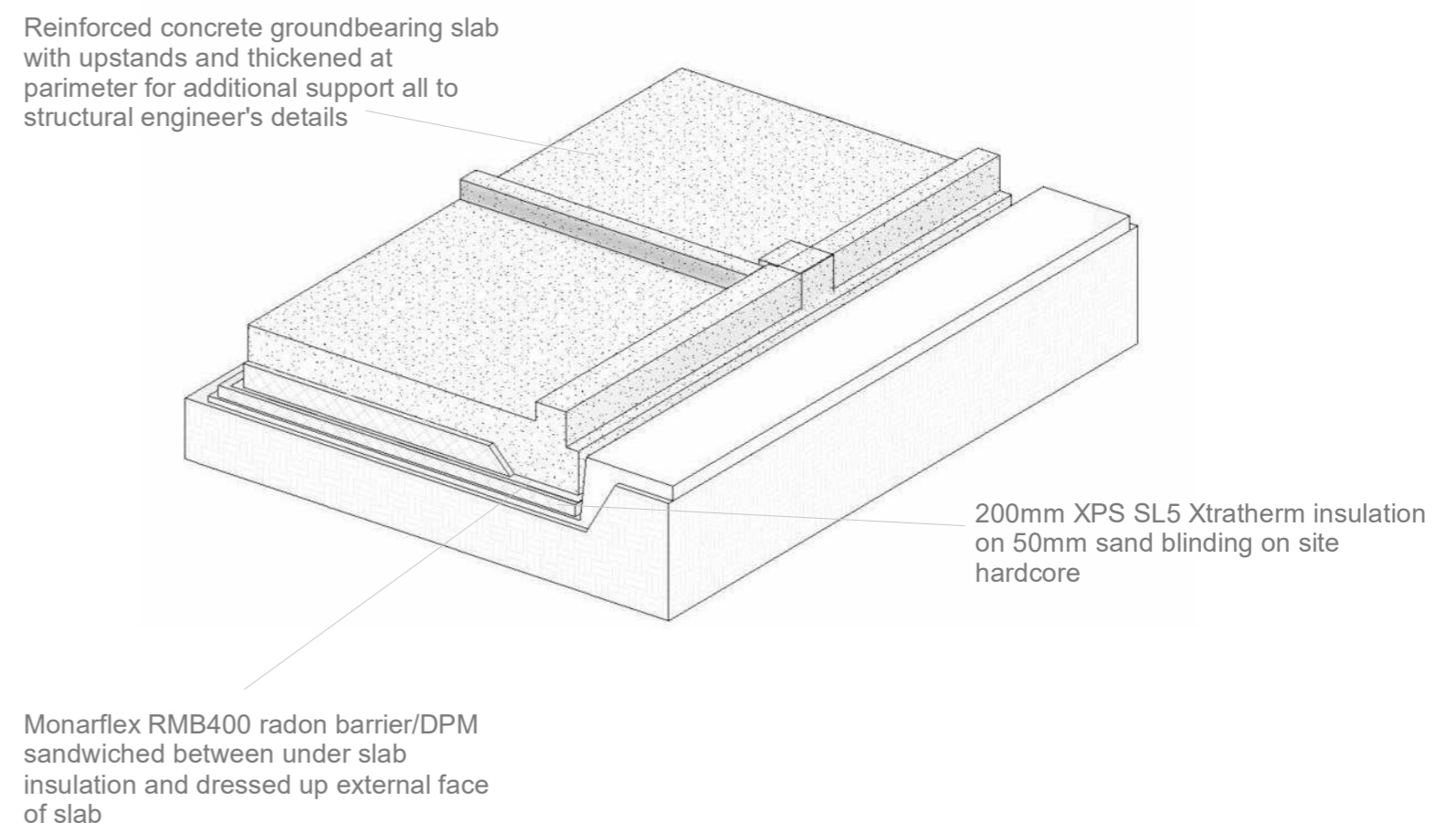
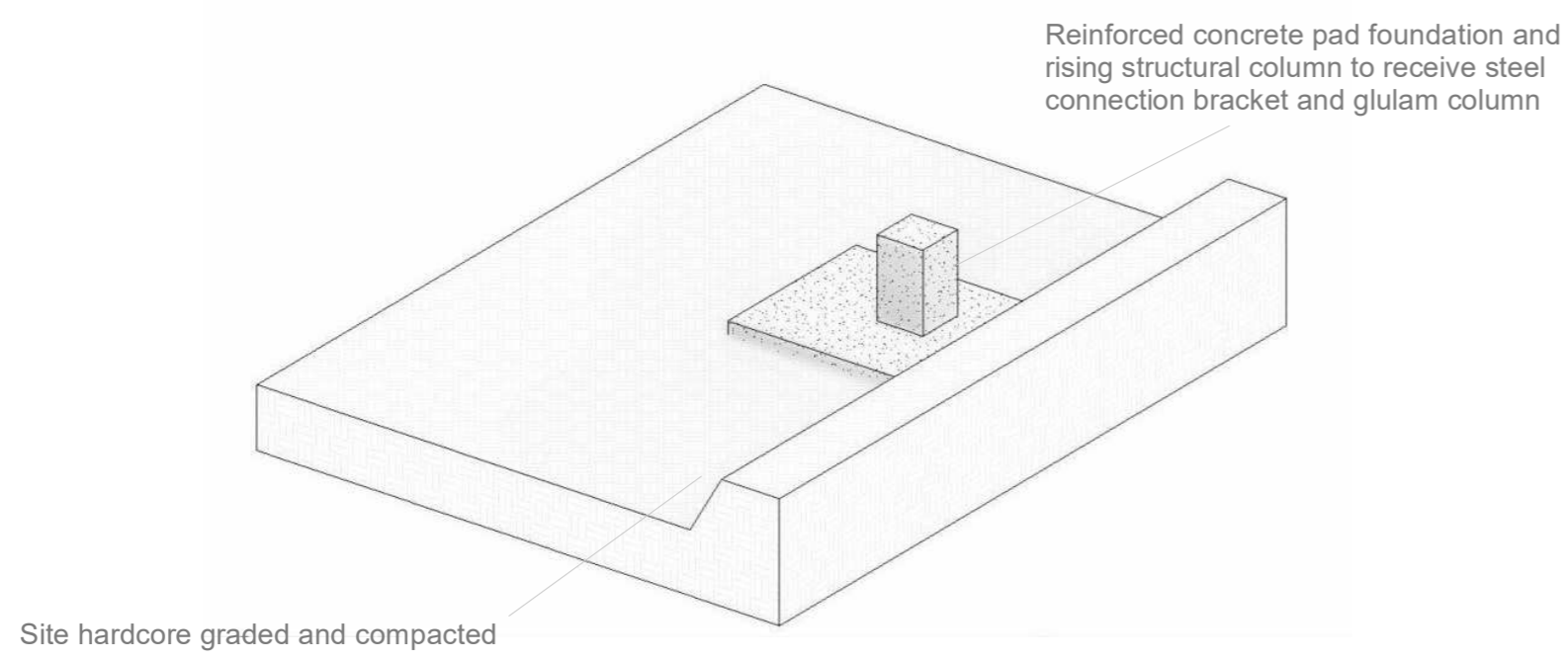
Project	CLONGRIFFIN COMMUNITY CENTRE, MAIN STREET, CLONGRIFFIN, Co. DUBLIN
Title	3D ROOF COVER, STRUCTURE AND NORTH FACING EAVES

Drawn by	Aidan McKenna
Project number	DT175-3-TECH 3100
Date	December 2020
Checked by	TDS Staff



Submitted to	DT175 - 3
Sheet no.	P006-TDS3-P6-A1-306
Scale	1 : 10

Revisions	Description	Date



01 Facade and Structural System Junction.
1 : 10



Project
CLONGRIFFIN COMMUNITY CENTRE, MAIN STREET, CLONGRIFFIN, Co. DUBLIN

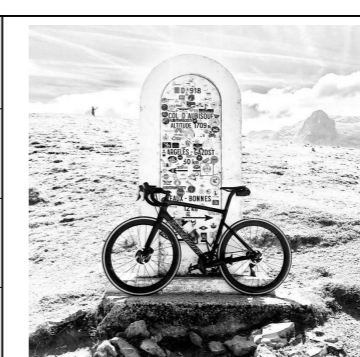
Title
3D FOUNDATION, STRUCTURAL JUNCTION & FACADE TRANSITION

Drawn by
Aidan McKenna

Project number
DT175-3-TECH 3100

Date
December 2020

Checked by
TDS Staff



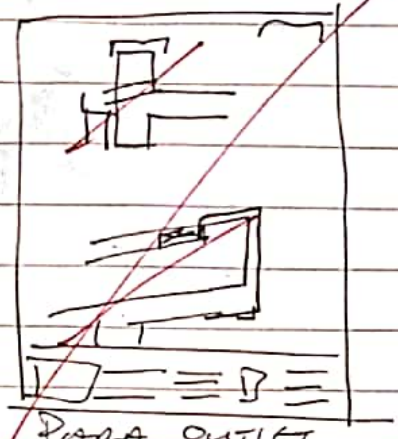
Submitted to
DT175 - 3

Sheet no.
P006-TDS3-P6-A1-307

Scale
1 : 10

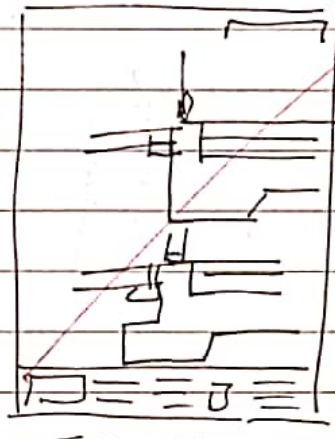
THE PLAN

-301



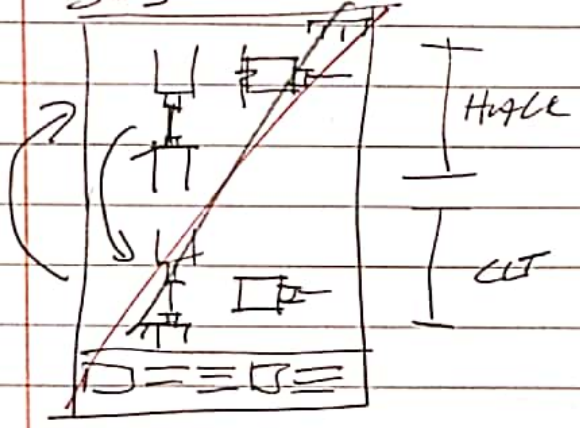
PARA OUTLET.
+ EAVES

-302



THRESHOLD.

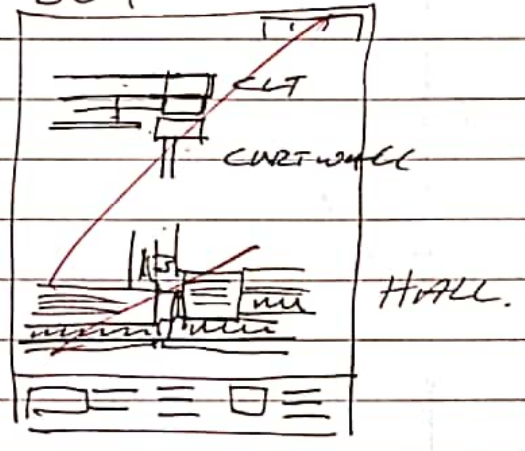
303



HALL

CEILING

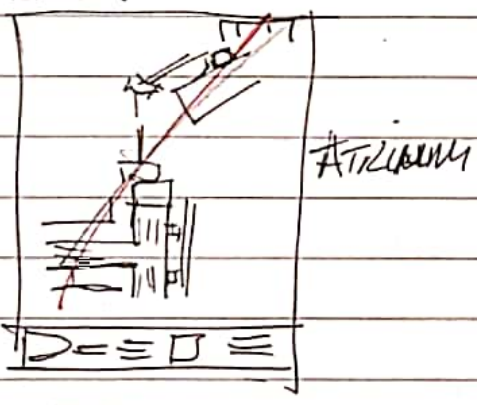
304



CURTAIN WALL

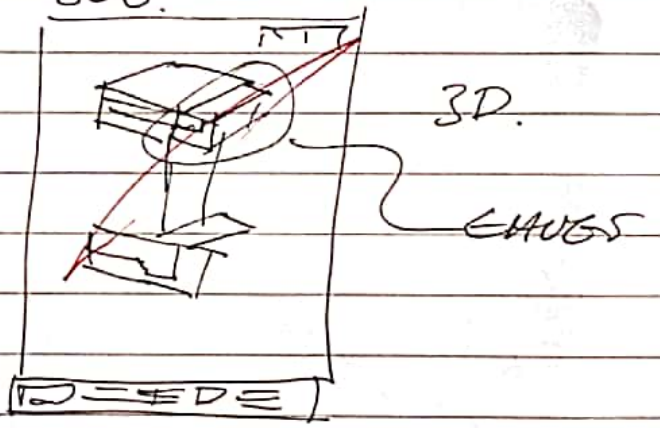
HALL.

305.



ATTICUM

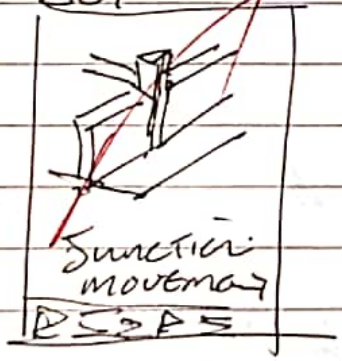
306.



3D.

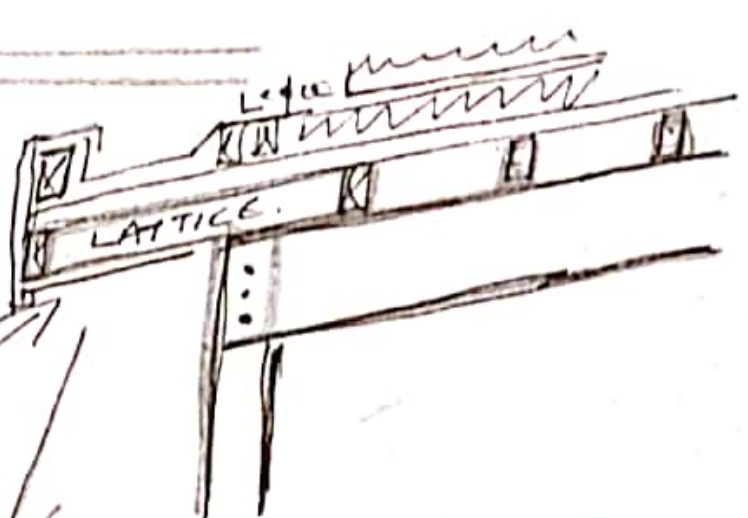
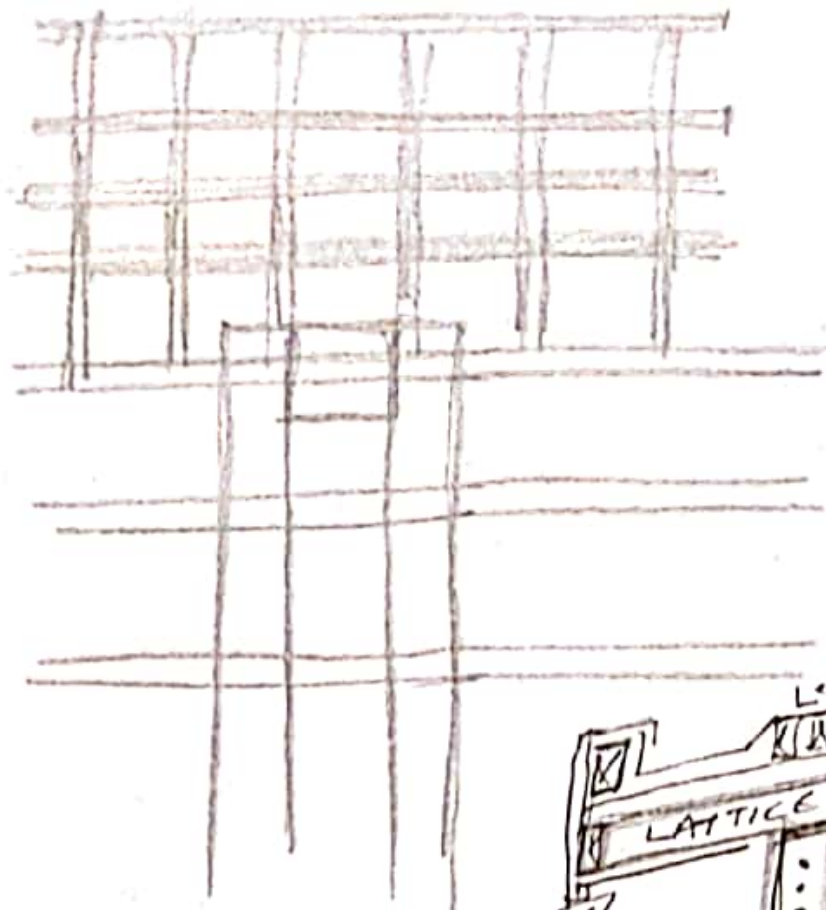
EAVES

307

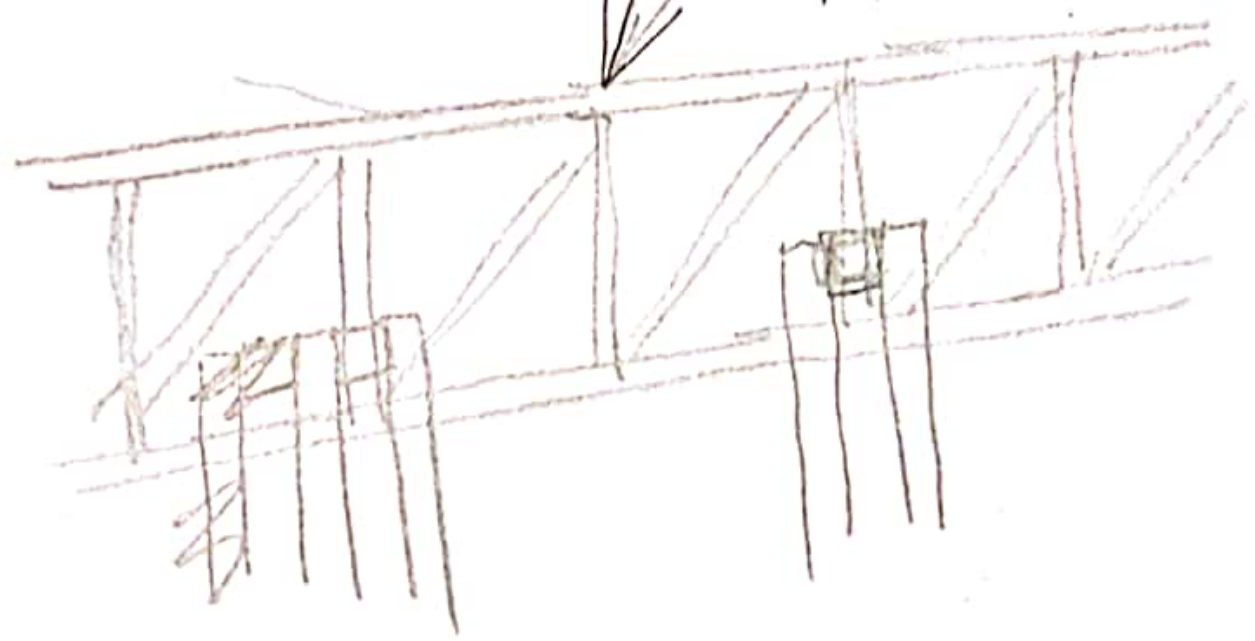


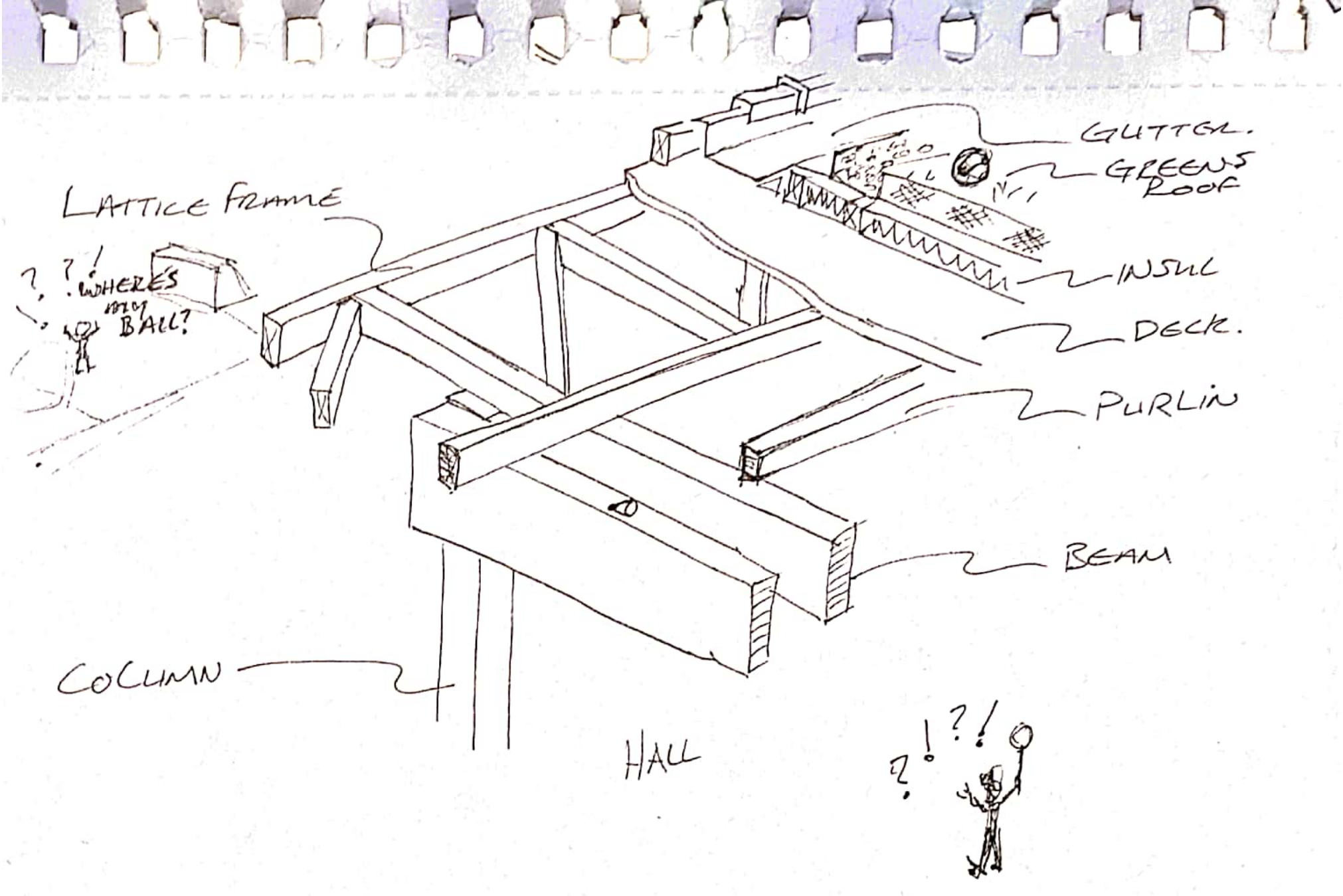
JUNCTION
MOVEMENT

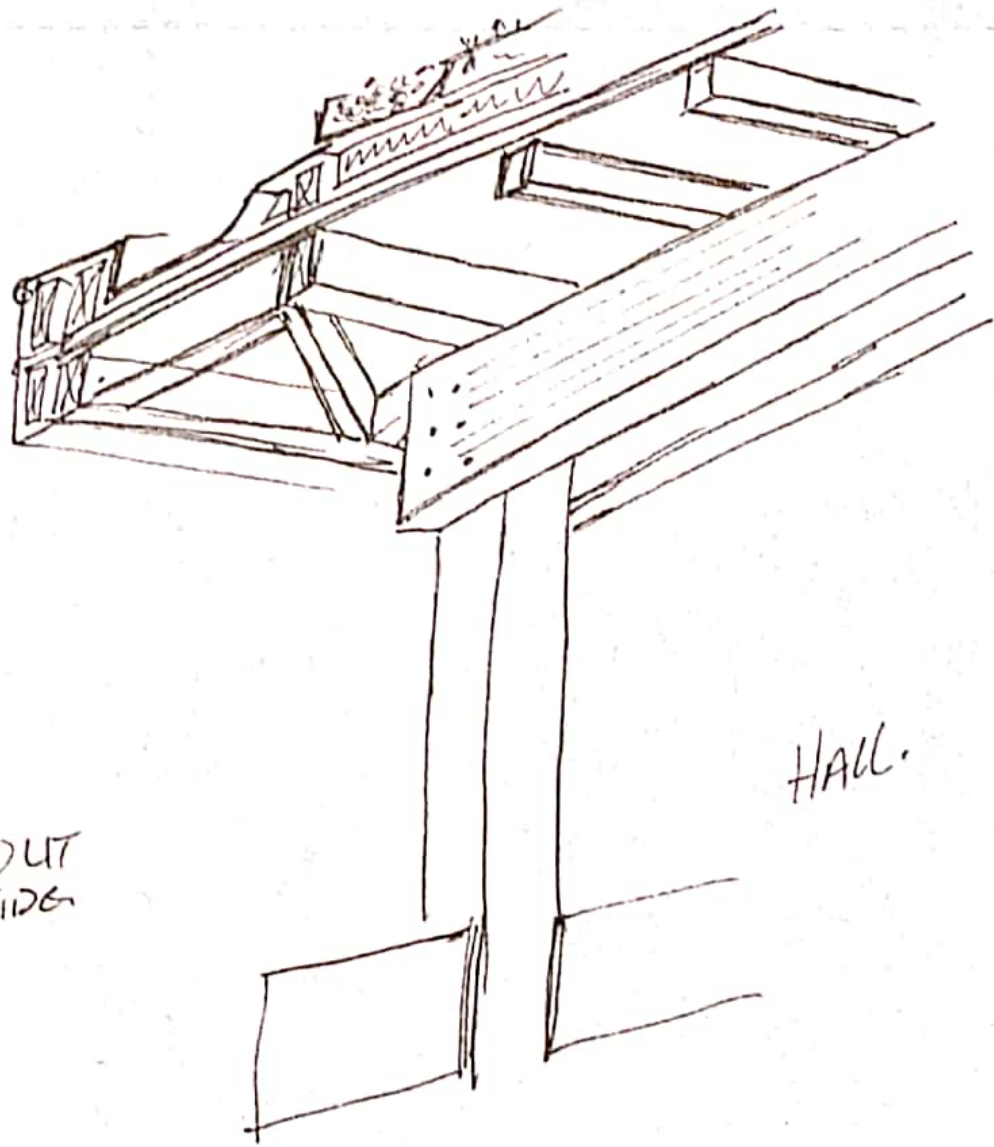
£100 i
125 DNG.
154
230



CANTILEVERED
LATTICE FRAME

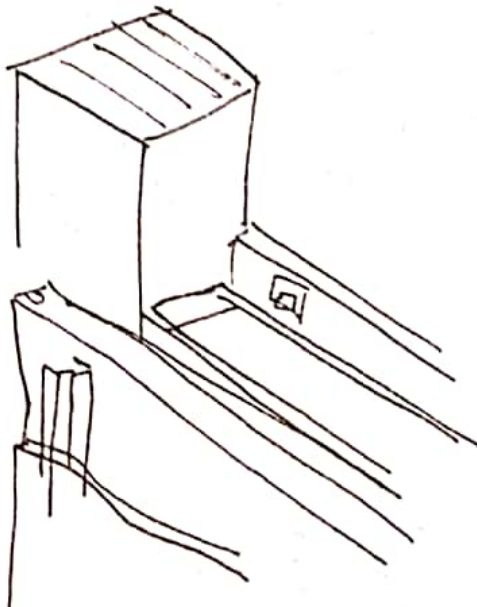
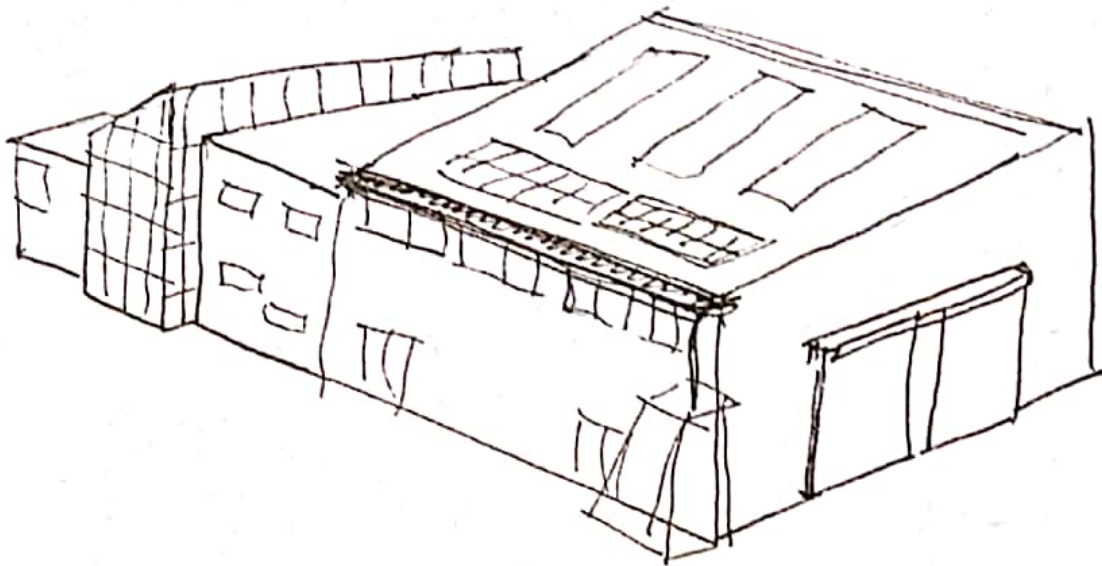




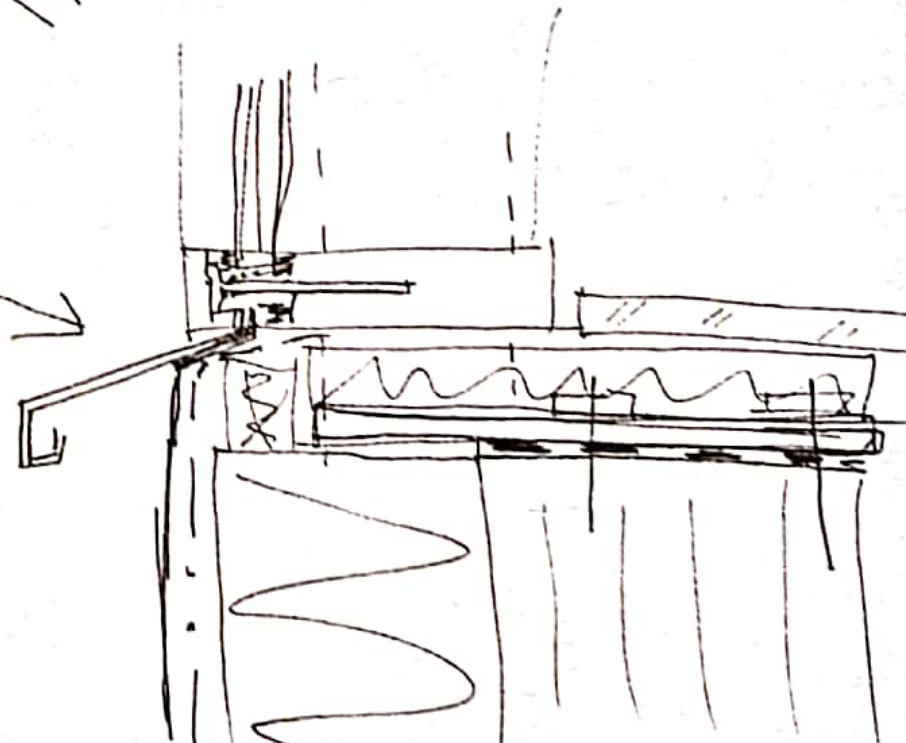


OUT
SIDE

HALL.



CHECK
BAUDGE. →
PARAPET
DETAIL. ↙



SLIT

MEMBRANES?

THIS MIGHT BE
A PROBLEM
FURTHER UP.

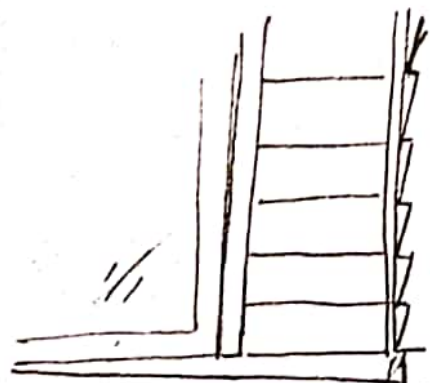
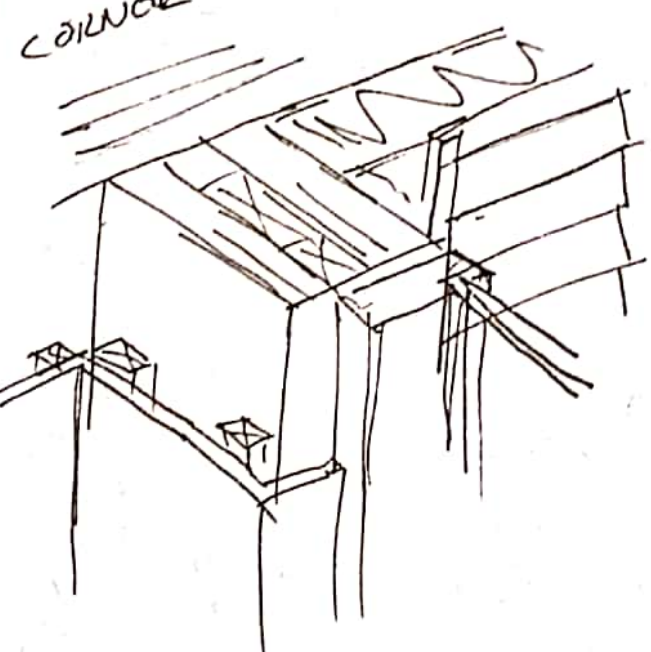
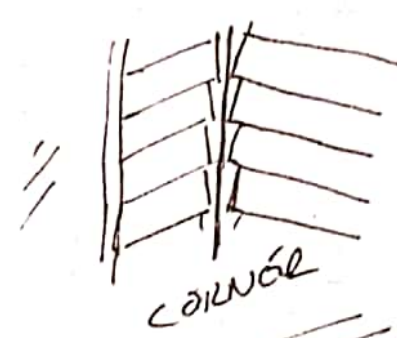
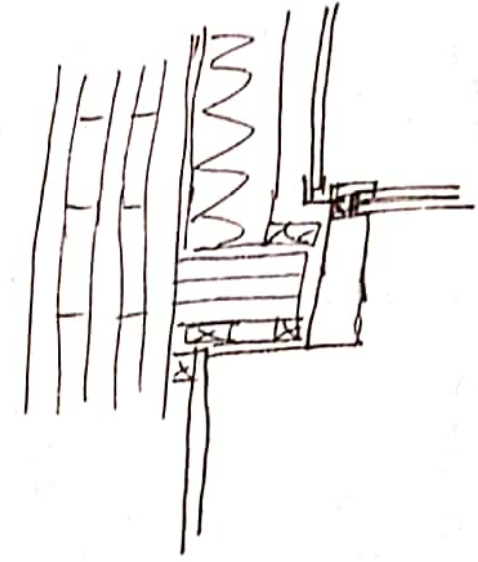
CURTAIN
WALL.

IN (ATRIUM)



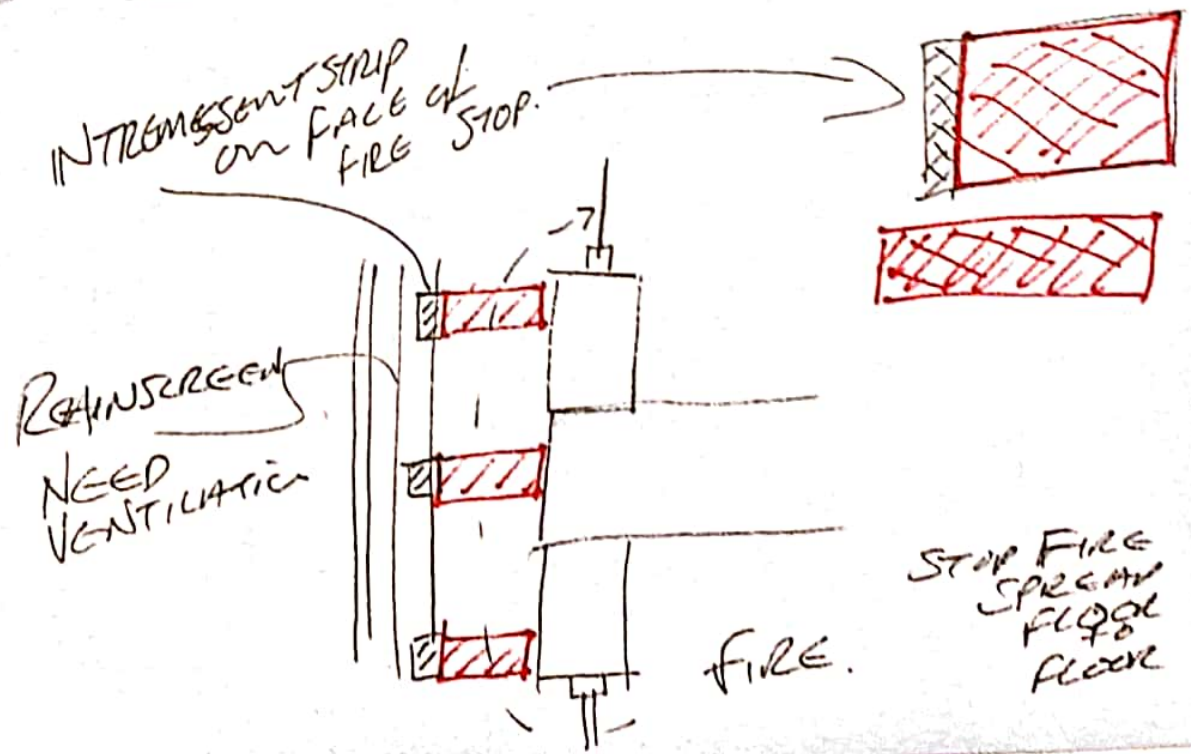
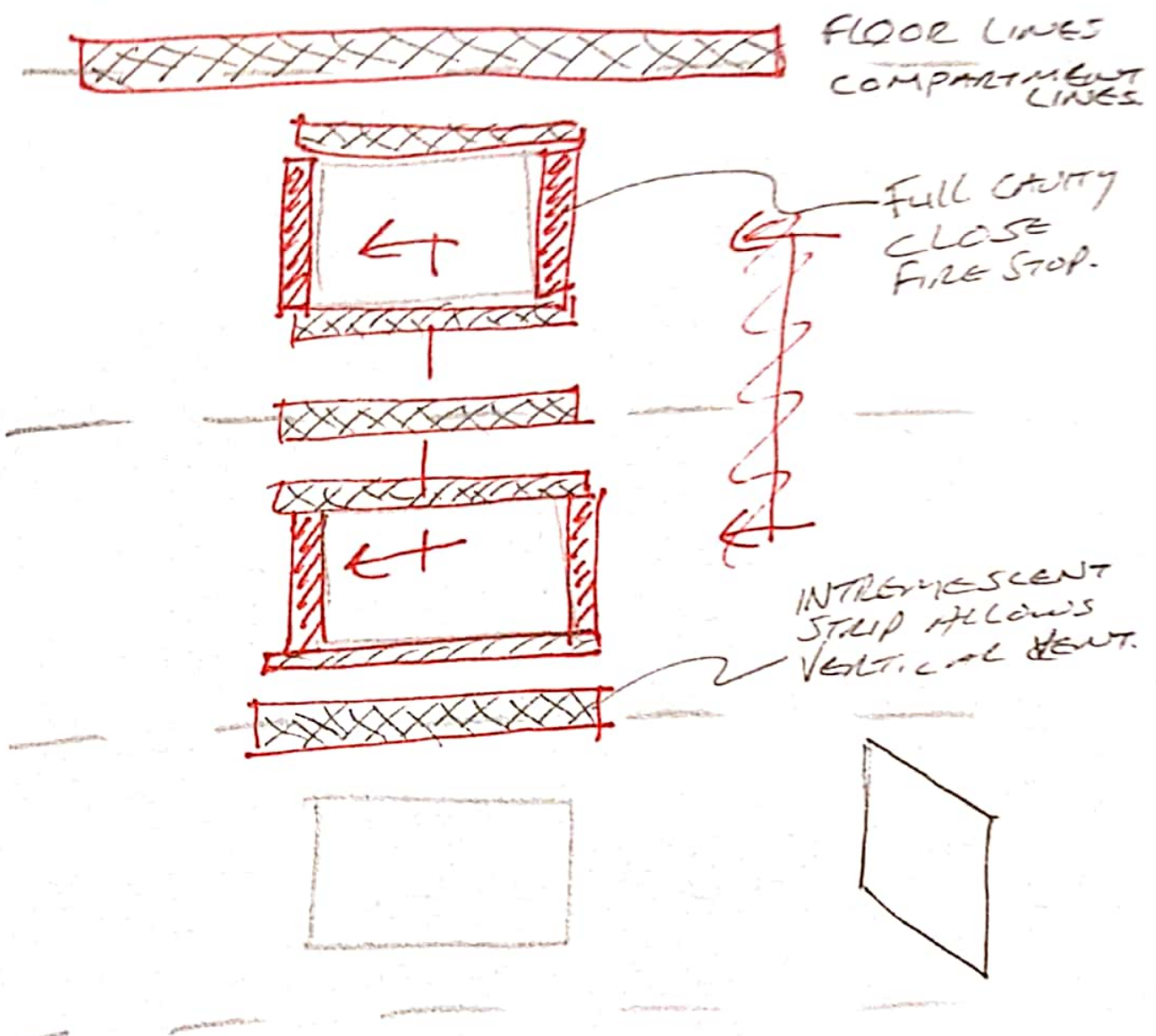
CLT.

↑ LOOSE
THE NIB?



TIMBER CLADDING

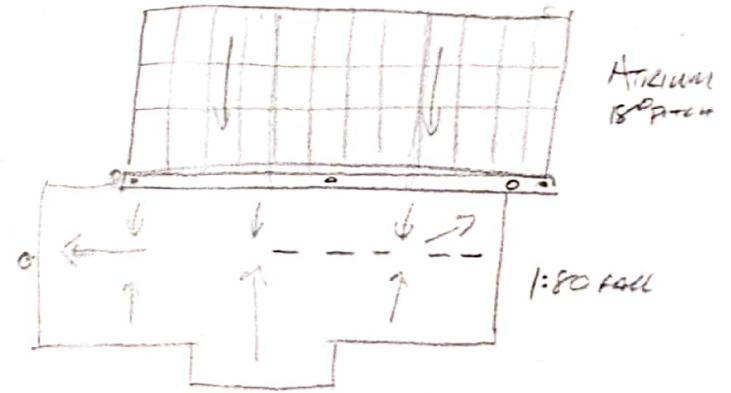
HILTI INTREMESECENT FIRE STOP.



TDG PART H

↳ 1.5 SURFACE WATER DRAINAGE.

TABLE 16 + 17.

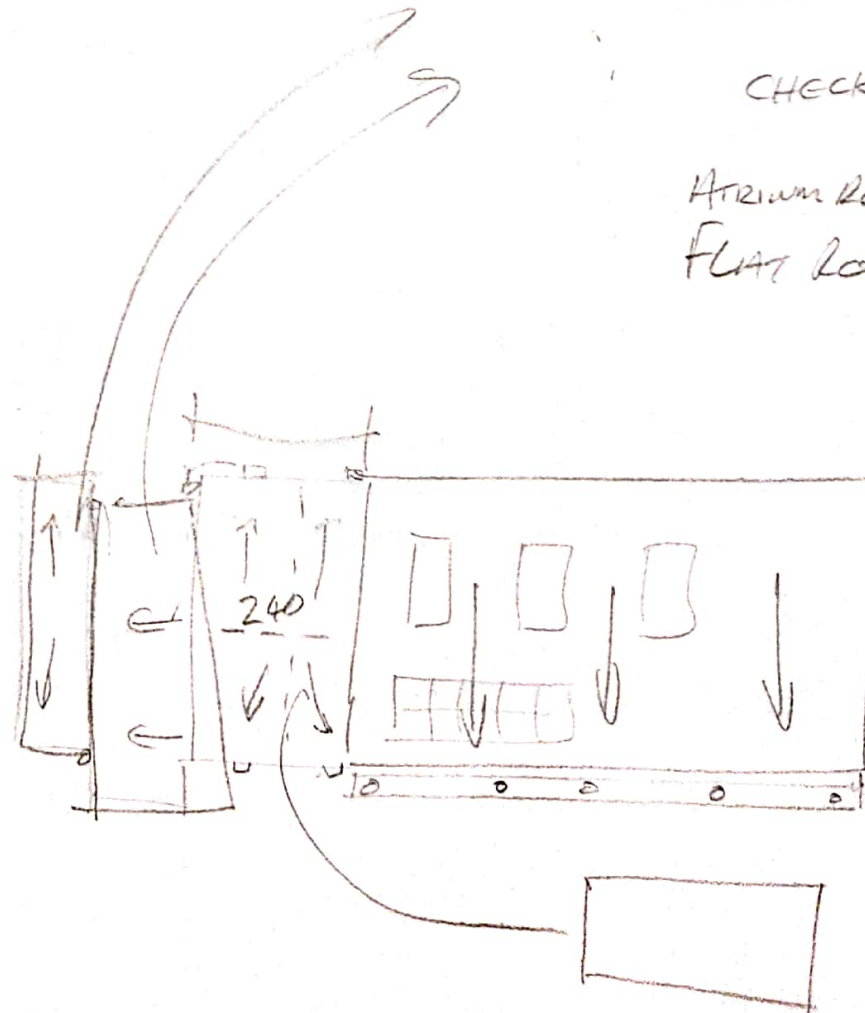


RAIN WATER

CHECK TDG PART H

Atticium Roof Area $135m^2$

FLAT ROOF AREA $118m^2$



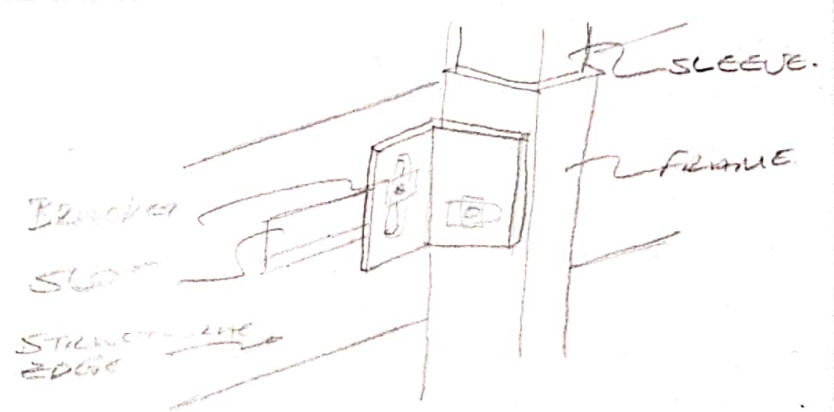
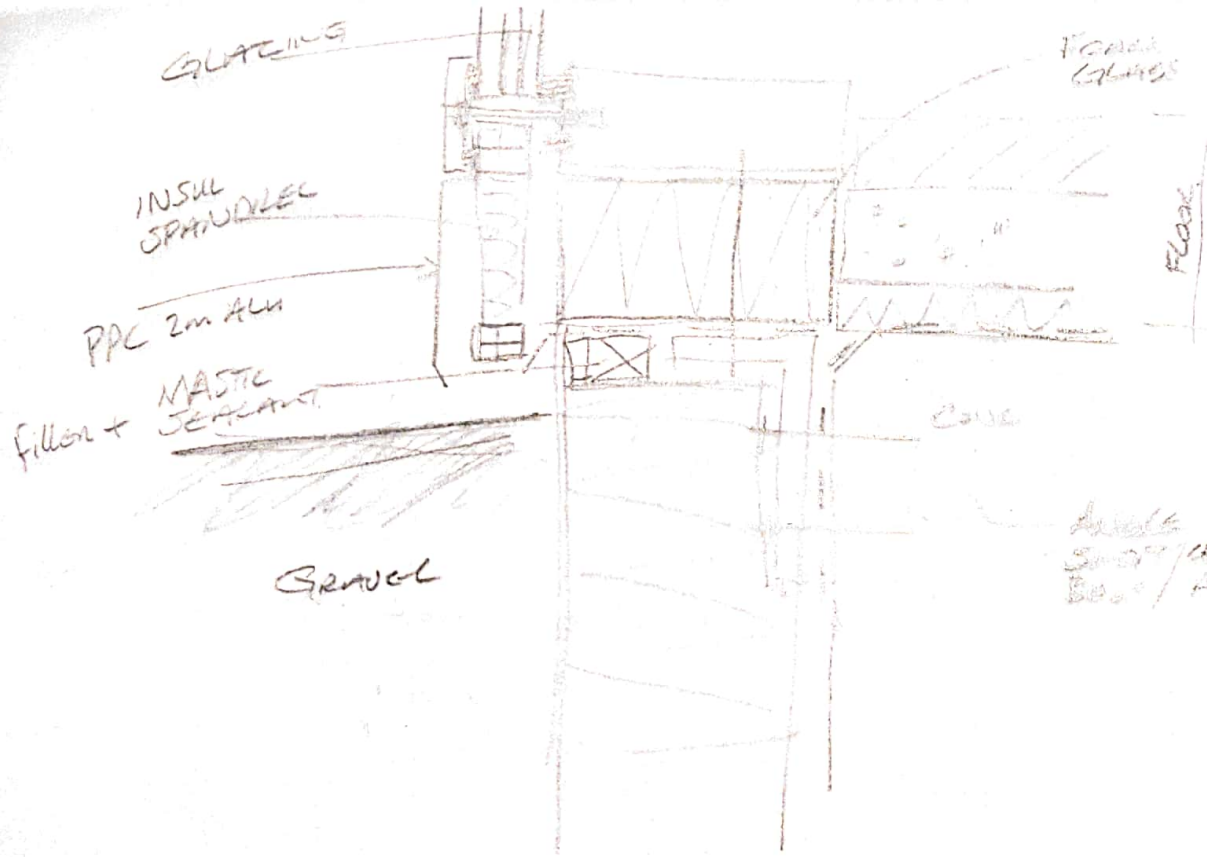
Hall $775m^2$
Pitch 4°

Facility $240m^2$

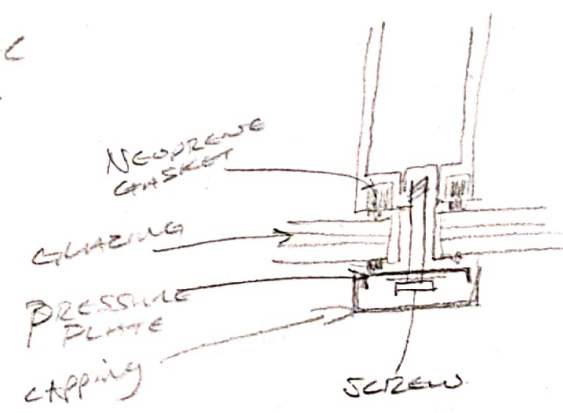
RAIN WATER OFF ROOF

AIDAN MCGENNA

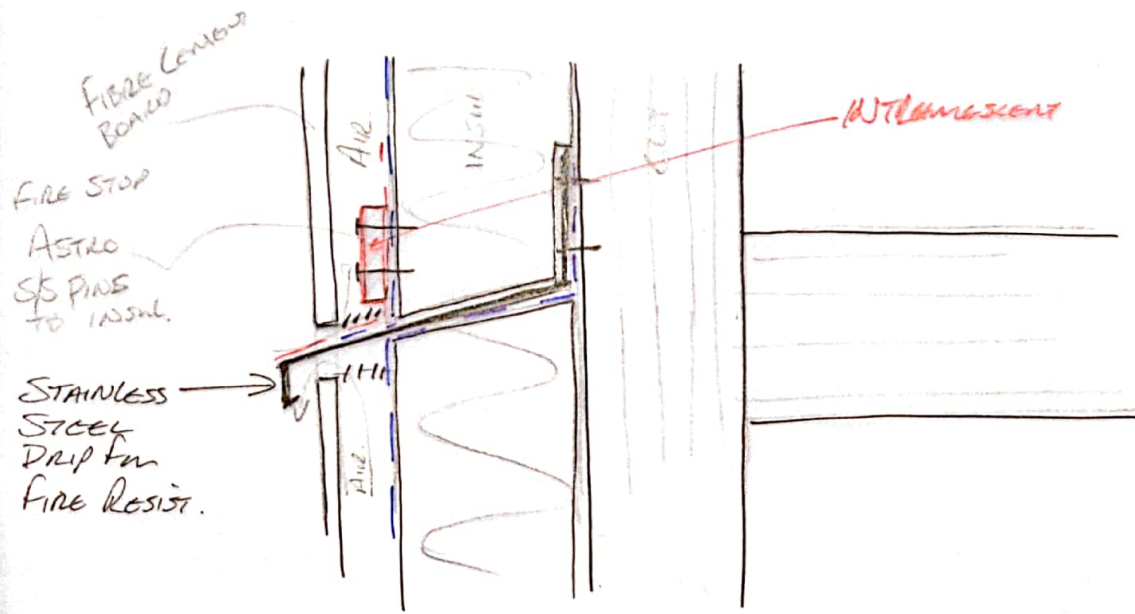
D19124287.



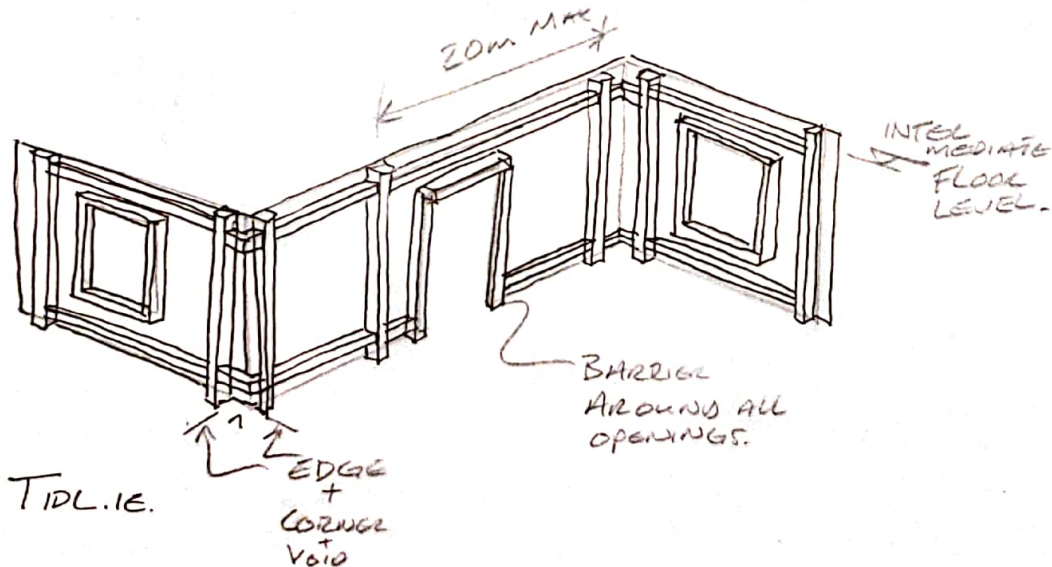
Anchor
Screw / CHEMICAL
Bolt / ANCHOR.



CURTAIN WALLING
 AIDAN MCKENNA
 D19124287.

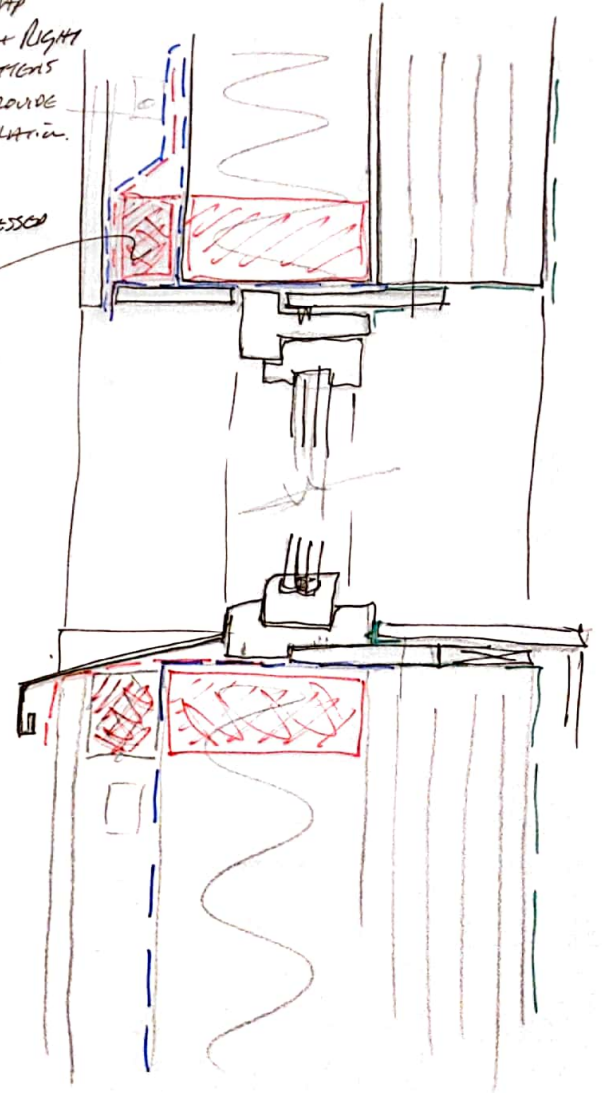


FIRE STOP IN VENTED CAVITY.



AIR INTO GAP FROM LEFT + RIGHT OF OPE + BATTENS NOTCHED TO PROVIDE CROSS VENTILATION.

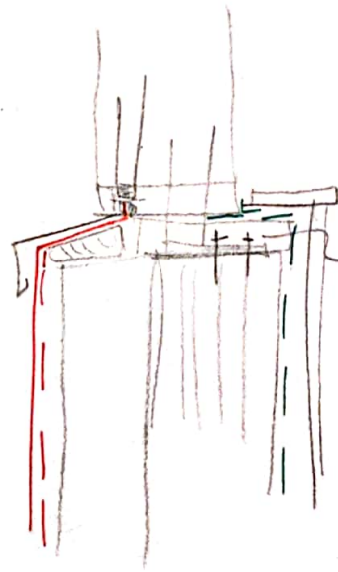
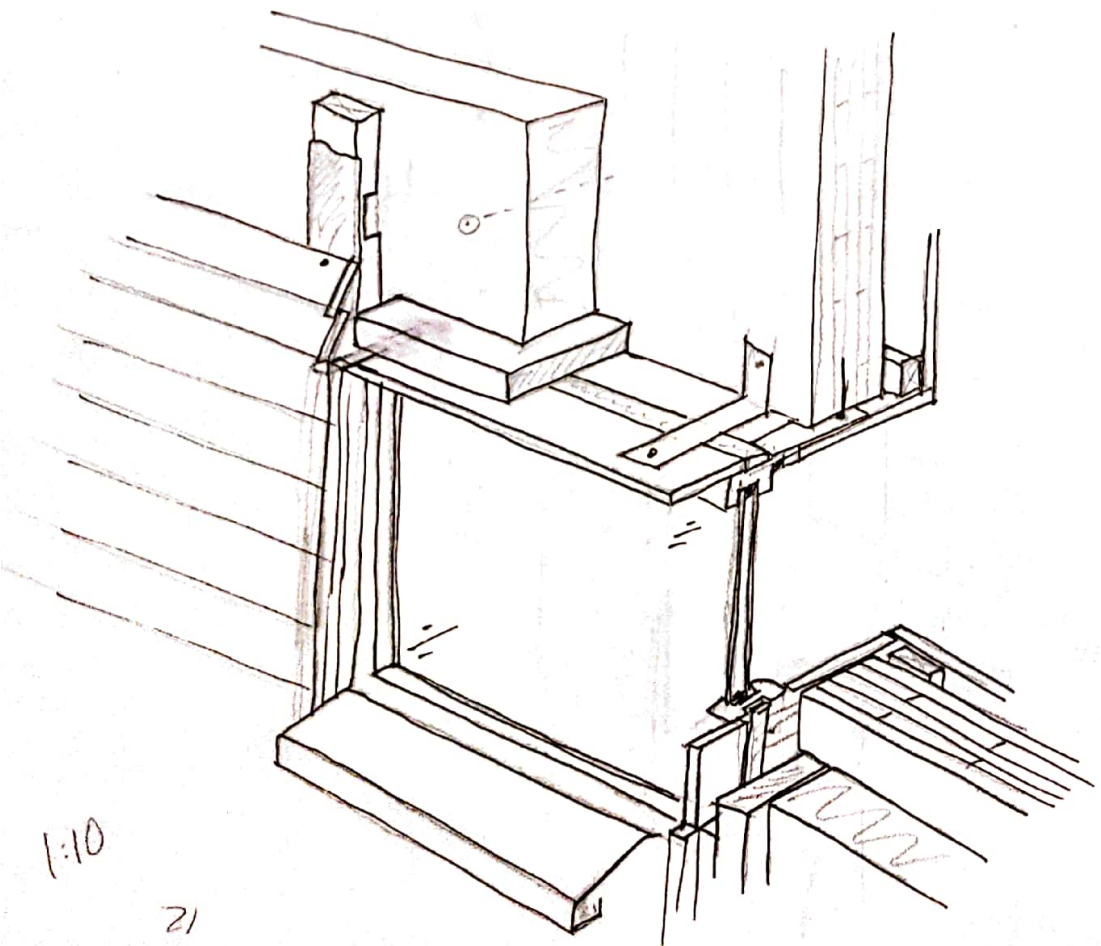
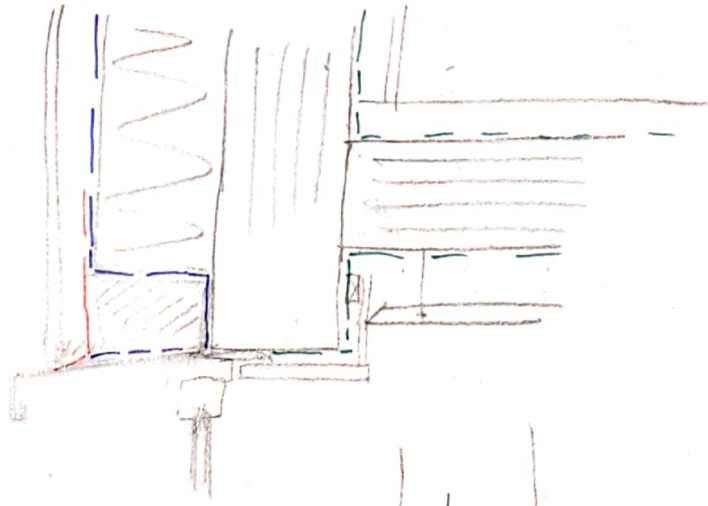
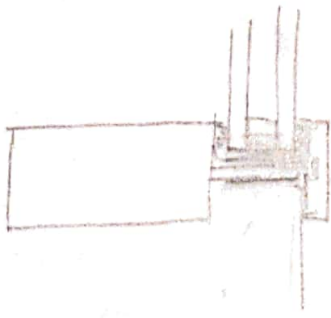
90% COMPRESSED FIRE STOP PINNED IN PLACE.



CILL + HEAD + INTERMED. FIRE STOPPING.

AIDAN MCKENNA.

D19124287.



Compact
foam insulation

FIRE WRAP 7
MEMBRANE

INTRINSIC
FACE

ASTRO

FOIL WRAPPER

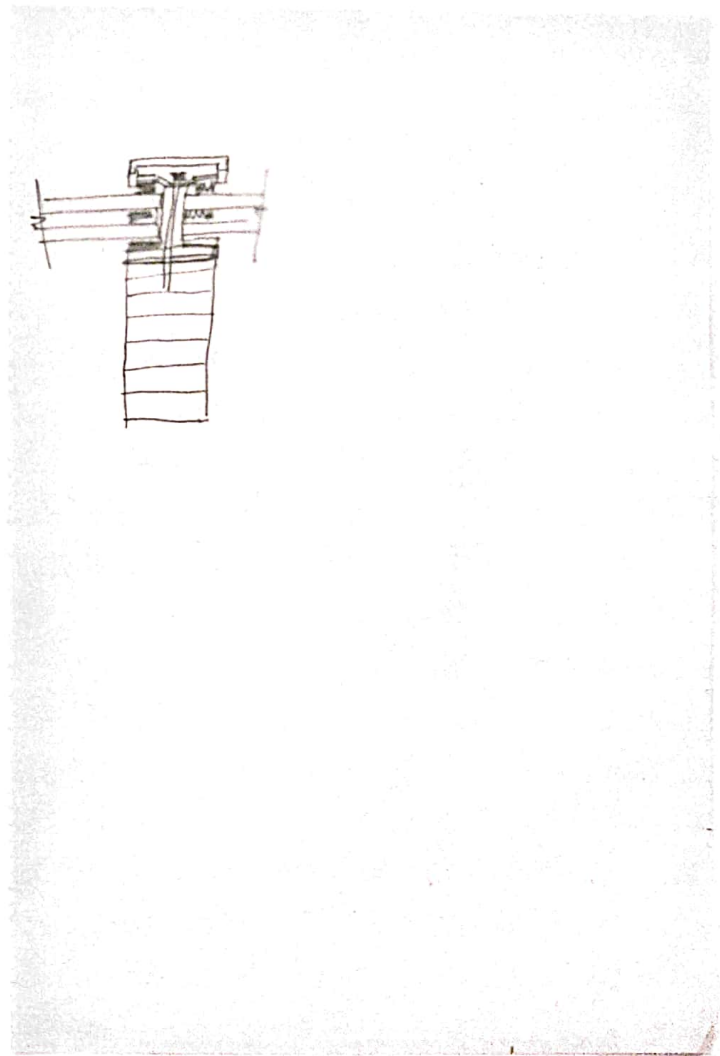
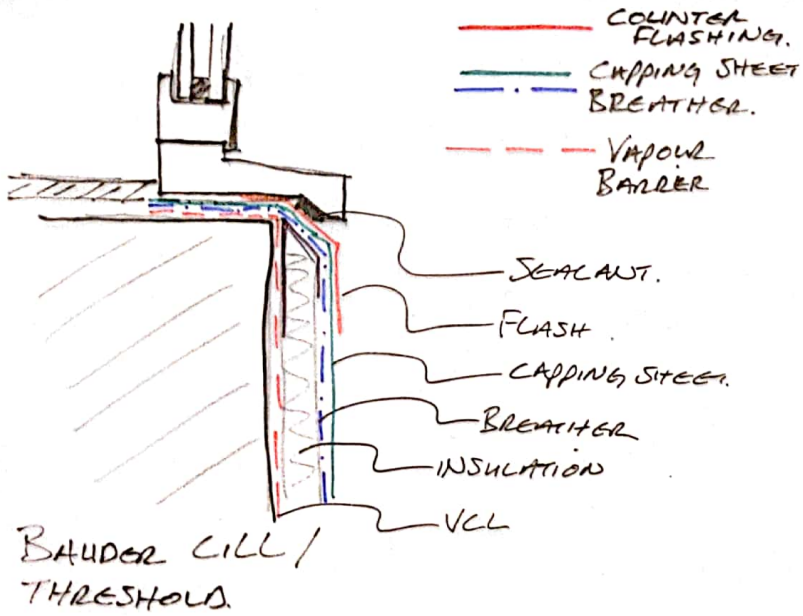
10-
30-
FIRE STOP

AIDAN MCKONNA
D19124287

FIRE STOP in cavity.

1:10

21



Roof MEMBRANES
 AIDAN MCKENNA.
 D19124282