

SEAN MOLLOY
PROJECT 5 - PART 2
05 - 02 - 21

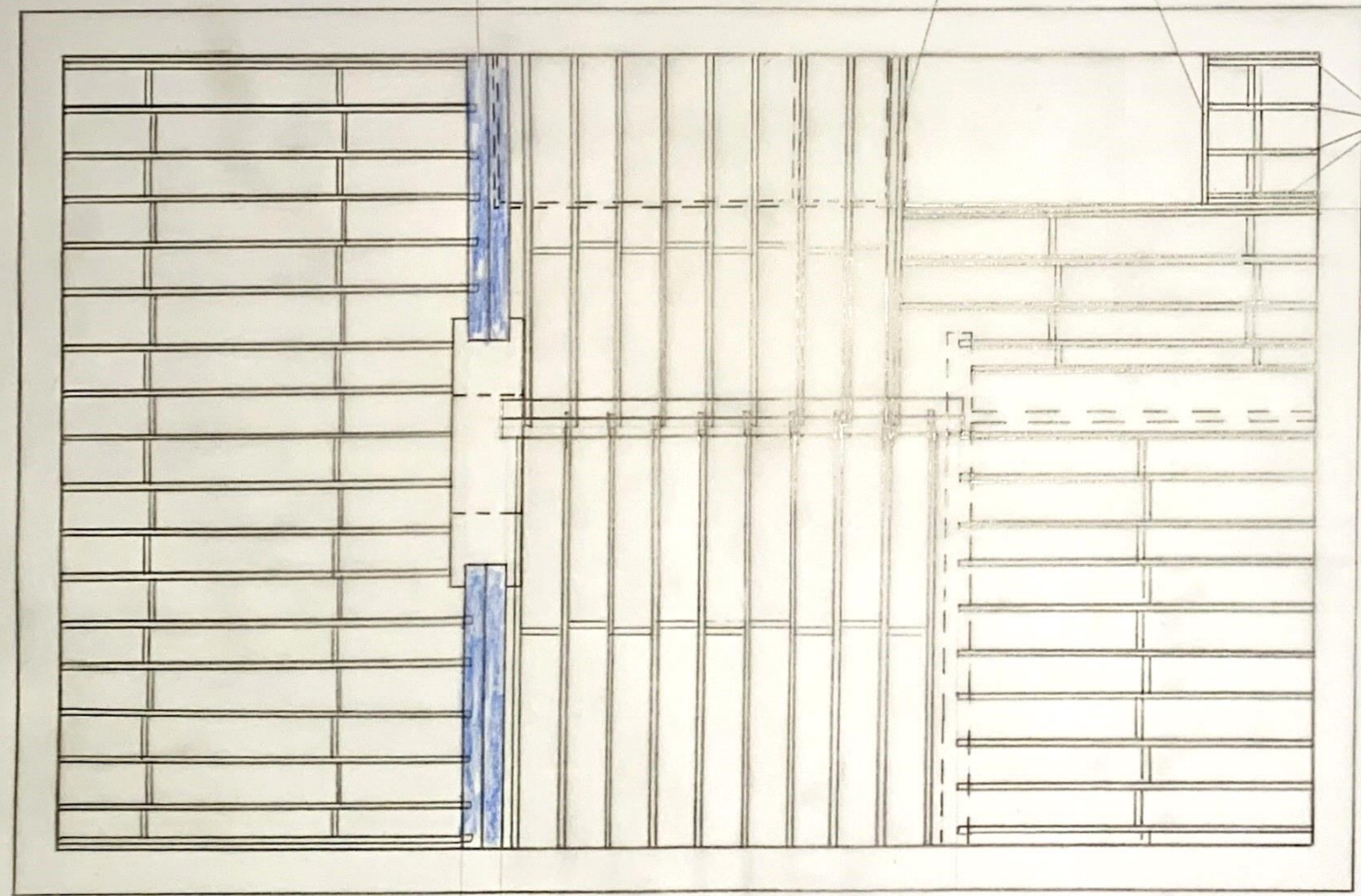
203 x 203 STEEL UC BEAM

TRIMMER JOISTS

TRIMMED JOISTS

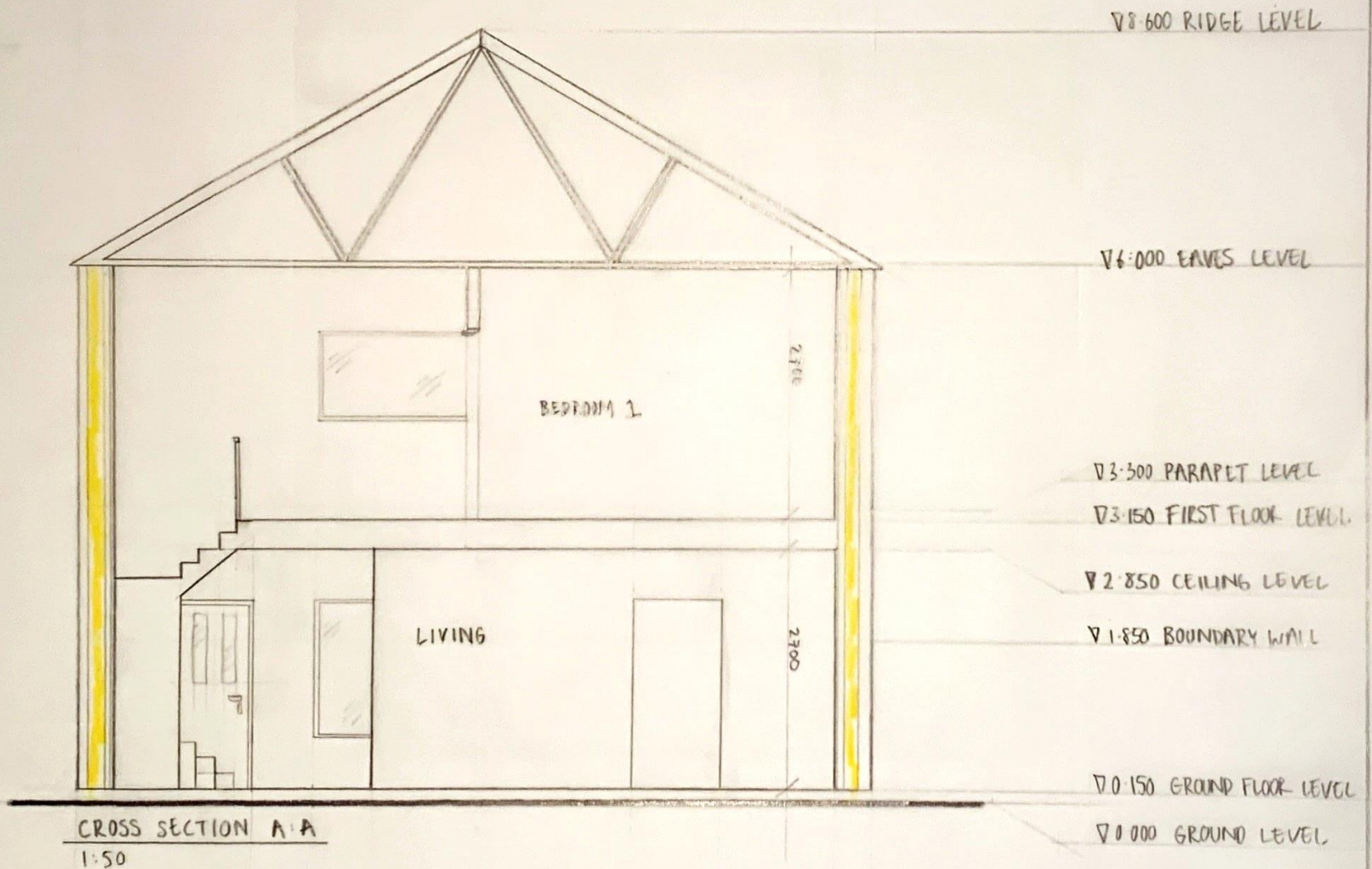
DOUBLT TRIMMING JOIST

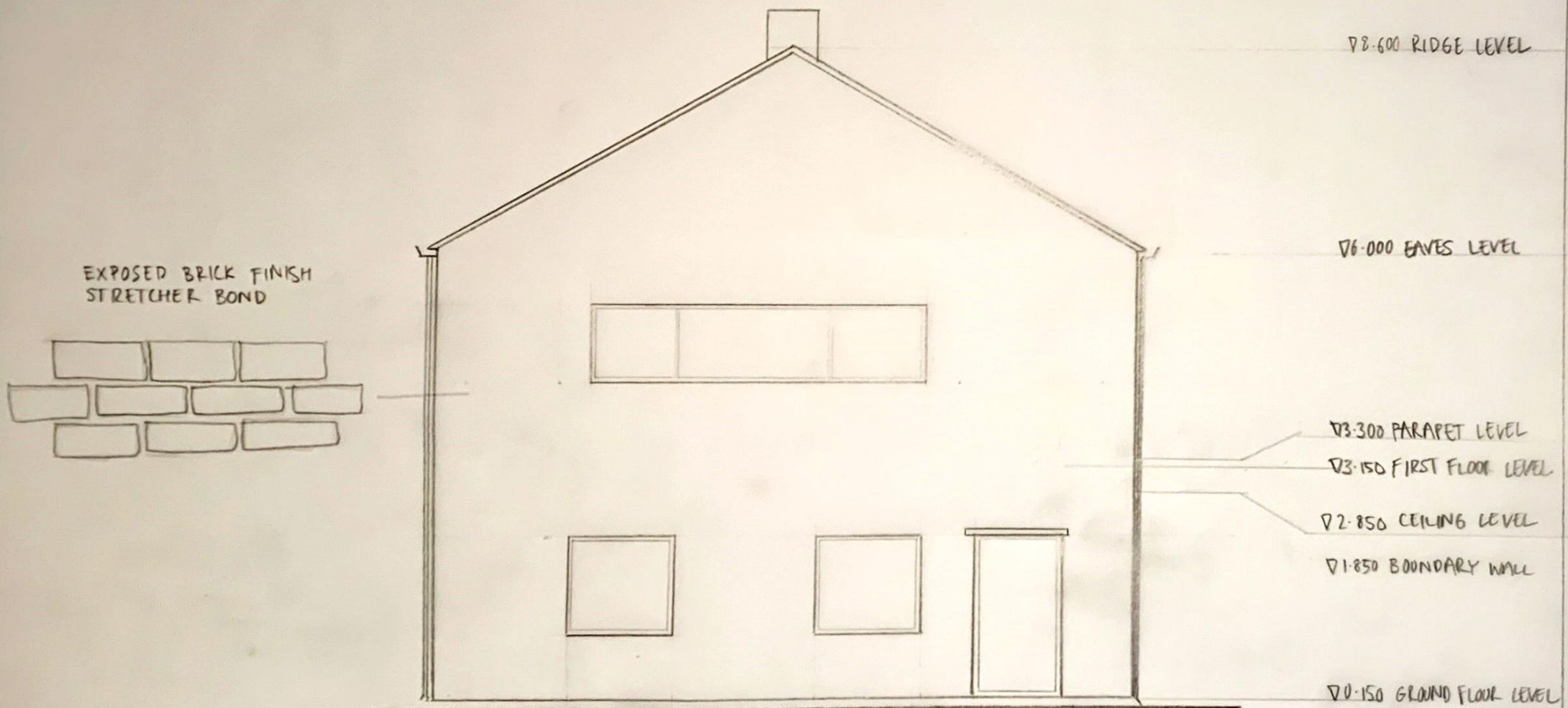
225 x 44 STRENGTH  
CLASS C16 @ 400c



FIRST FLOOR CONSTRUCTION ANALYSIS

SEAN MOLLOY
PROJECT 5 - PART 2
05 - 02 - 23





EXPOSED BRICK FINISH  
STRETCHER BOND

78.600 RIDGE LEVEL

76.000 EAVES LEVEL

73.300 PARAPET LEVEL

73.150 FIRST FLOOR LEVEL

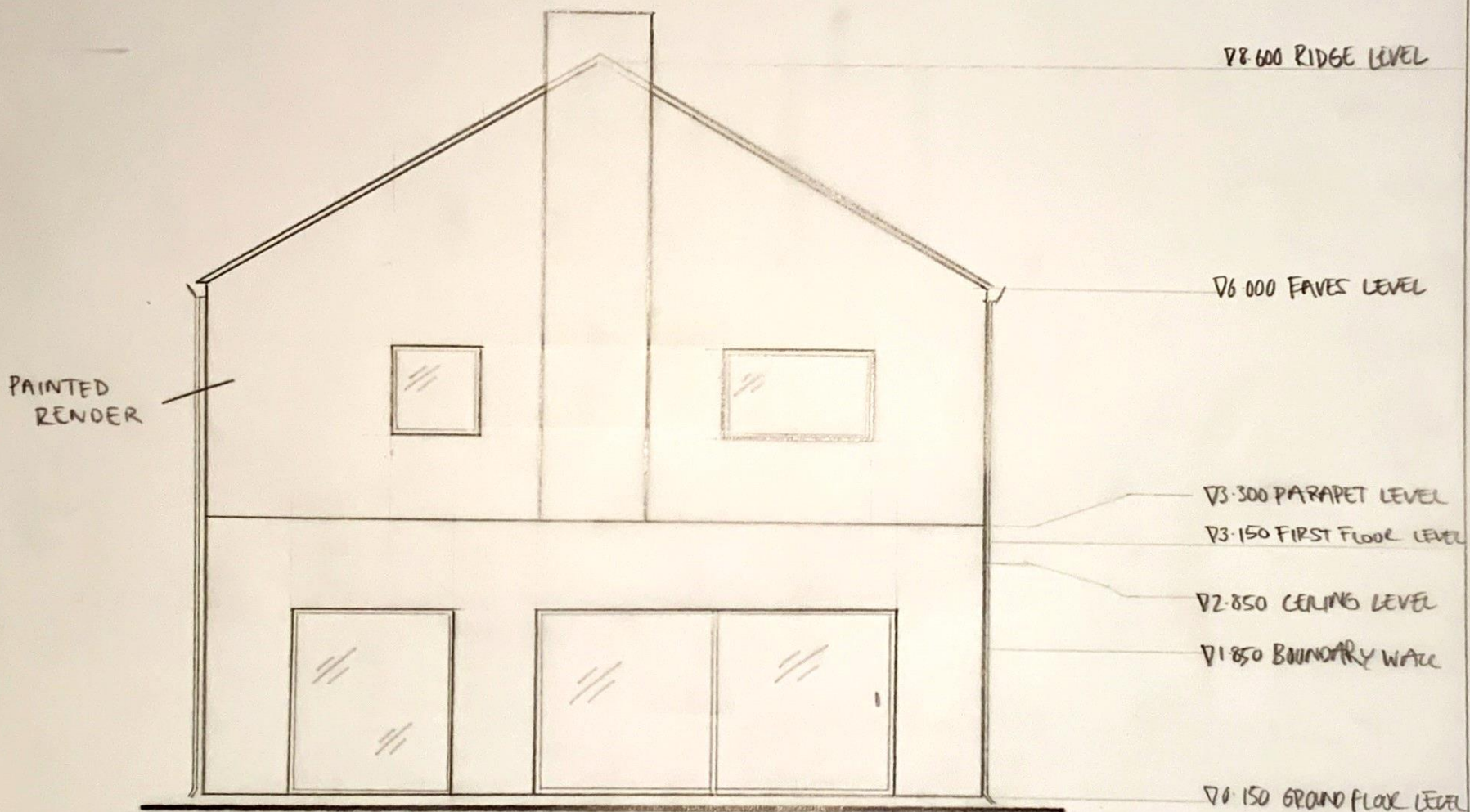
72.850 CEILING LEVEL

71.850 BOUNDARY WALL

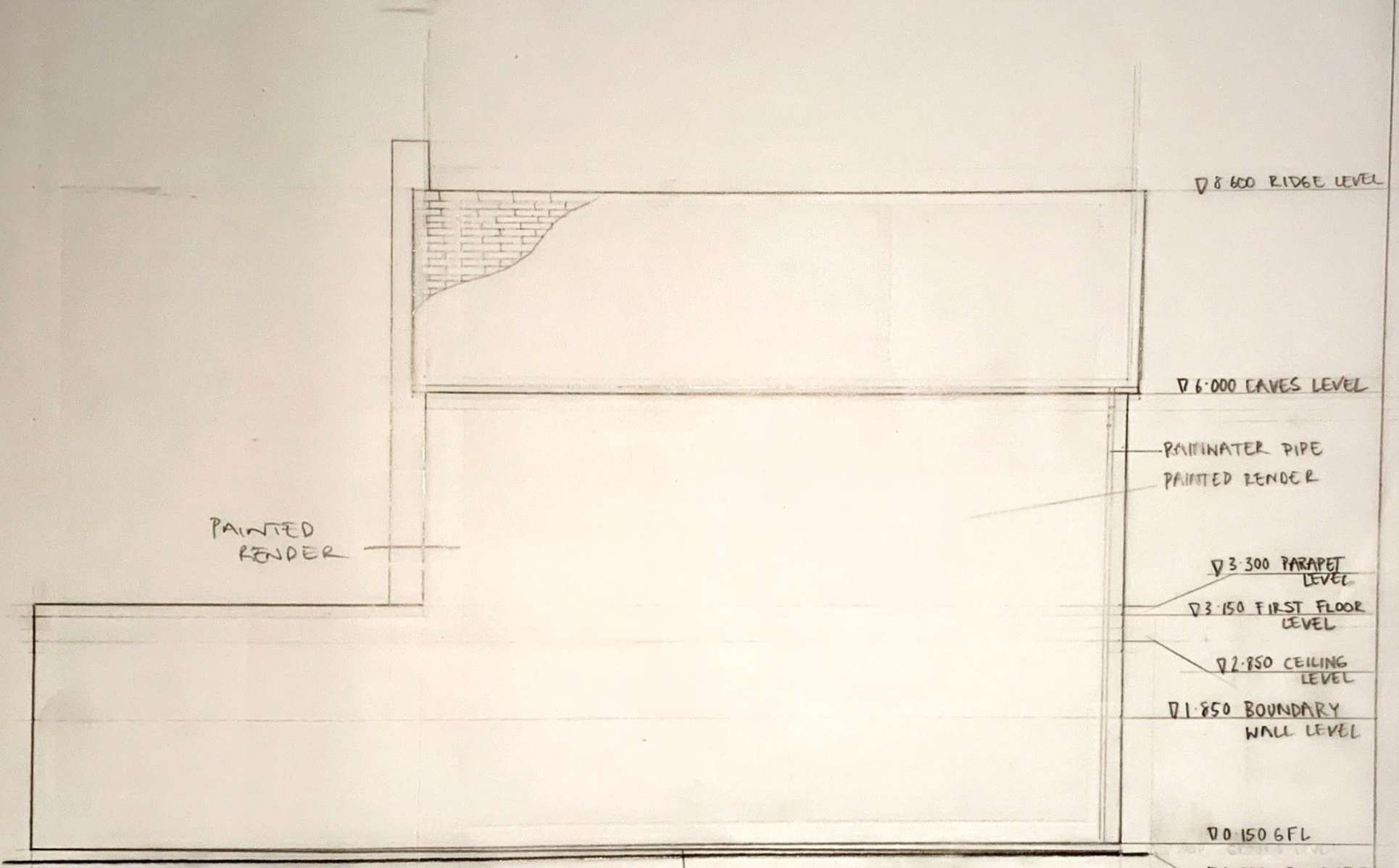
70.150 GROUND FLOOR LEVEL

70.000 GROUND LEVEL

SOUTH ELEVATION  
1:50



NORTH ELEVATION  
1:50



PAINTED  
RENDER

D 8.600 RIDGE LEVEL

D 6.000 EAVES LEVEL

RAINWATER PIPE  
PAINTED RENDER

D 3.300 PARAPET  
LEVEL

D 3.150 FIRST FLOOR  
LEVEL

D 2.850 CEILING  
LEVEL

D 1.850 BOUNDARY  
WALL LEVEL

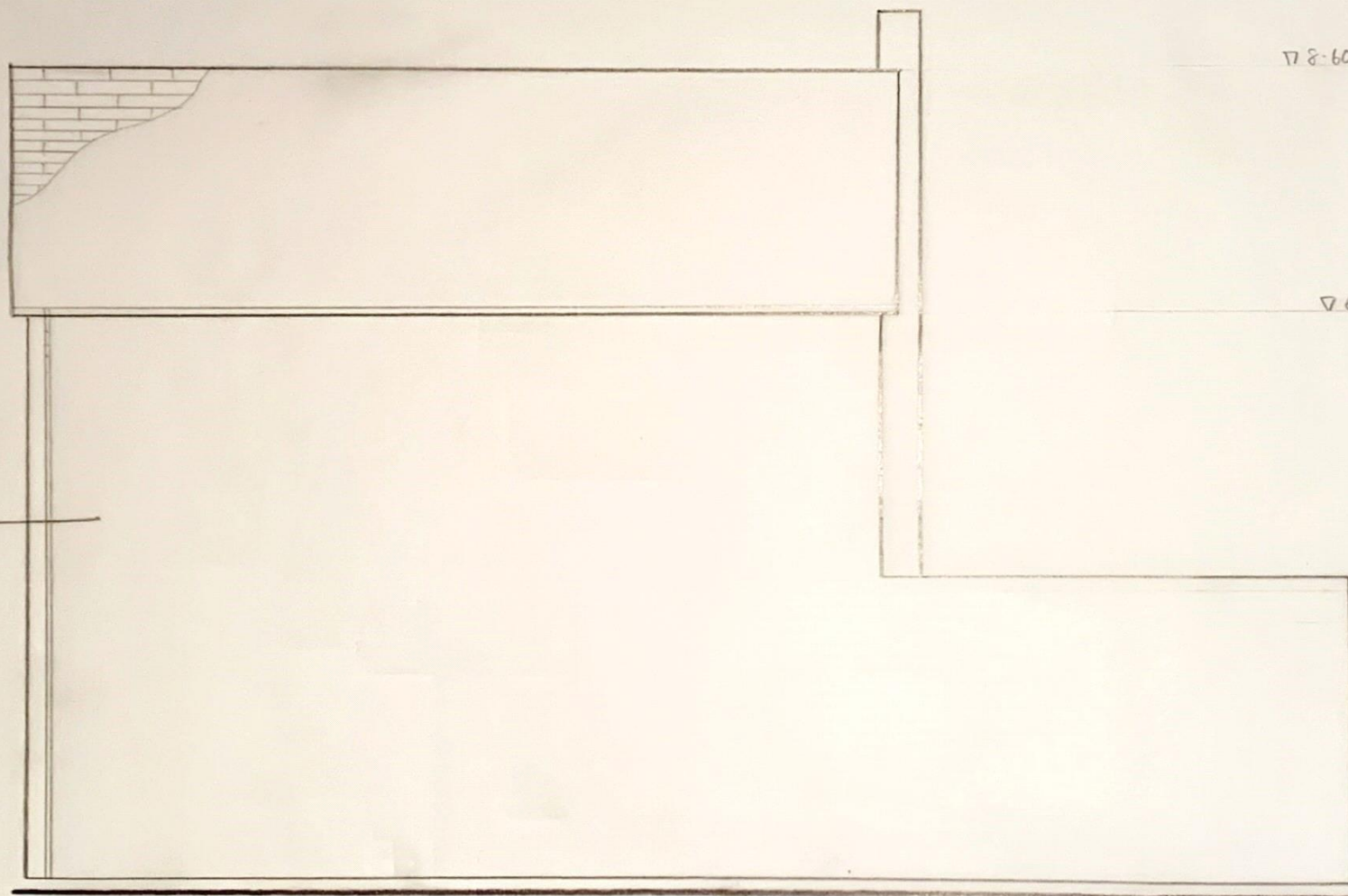
D 0.150 GFL

D 0.000 GROUND LEVEL

INCLINE TOWARDS REAR OF  
DWELLING FOR LEVEL ACCESS

WEST ELEVATION  
1:50

SEAN MOLLOY
PROJECT 5 - PART 2
05-06-21



7.8.600 RIDGE LEVEL

7.6.000 EAVES LEVEL

7.3.300 PARAPET LEVEL

7.3.150 FIRST FLOOR LEVEL

7.2.850 CEILING LEVEL

7.1.850 BOUNDARY LEVEL

7.0.150 GFL

7.0.000 GROUND LEVEL

PAINTED  
RENDER

EAST ELEVATION  
1:50

SEAN MOLLOY
PROJECT 5 - PART 1
05 - 07 - 24