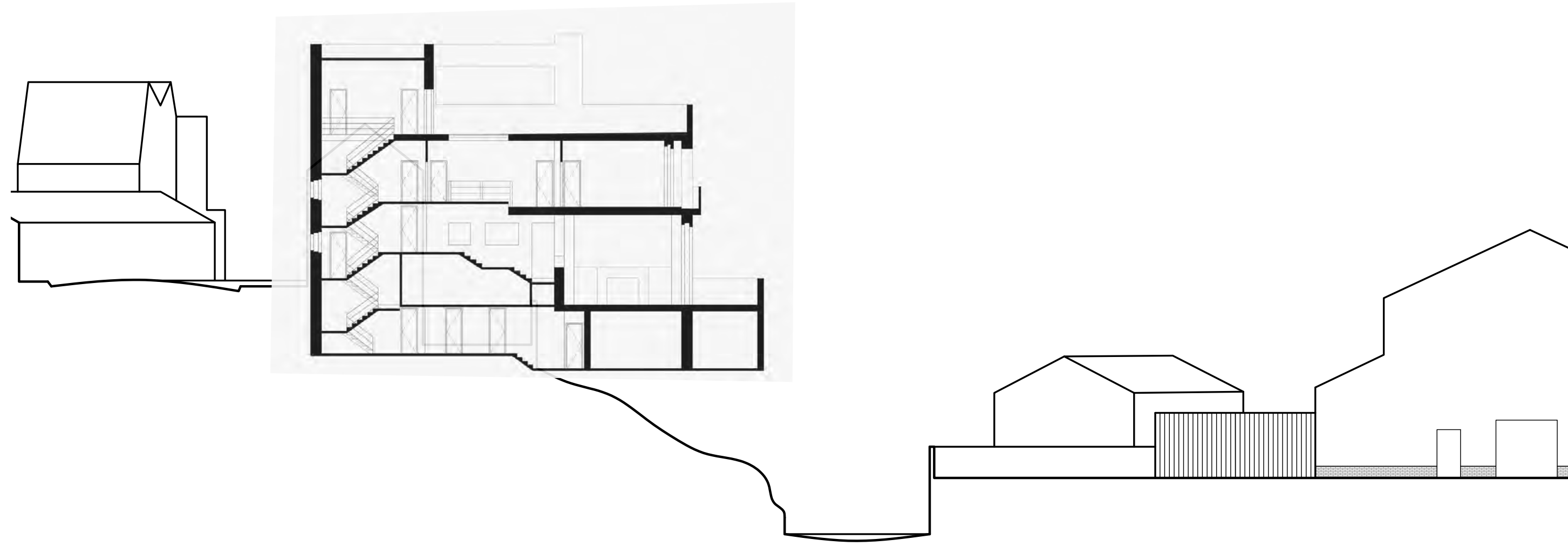




INTRODUCTION

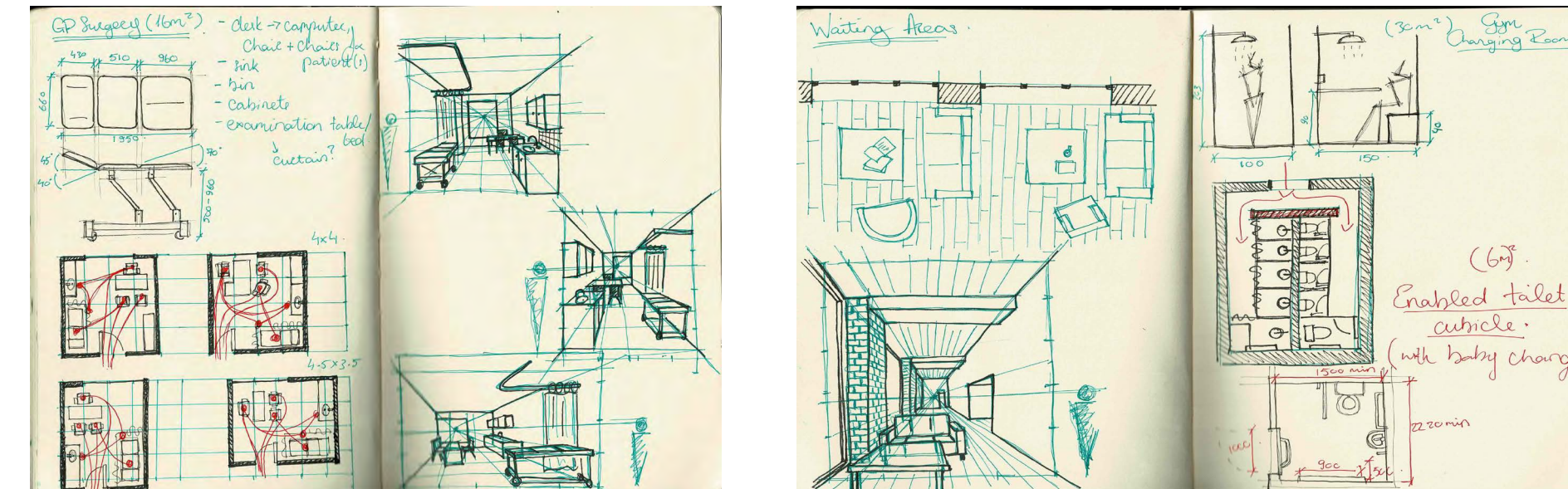


VILLA MULLER IMAGINED ON THE SITE

The planning of my project was driven a quote from Adolf Loos;

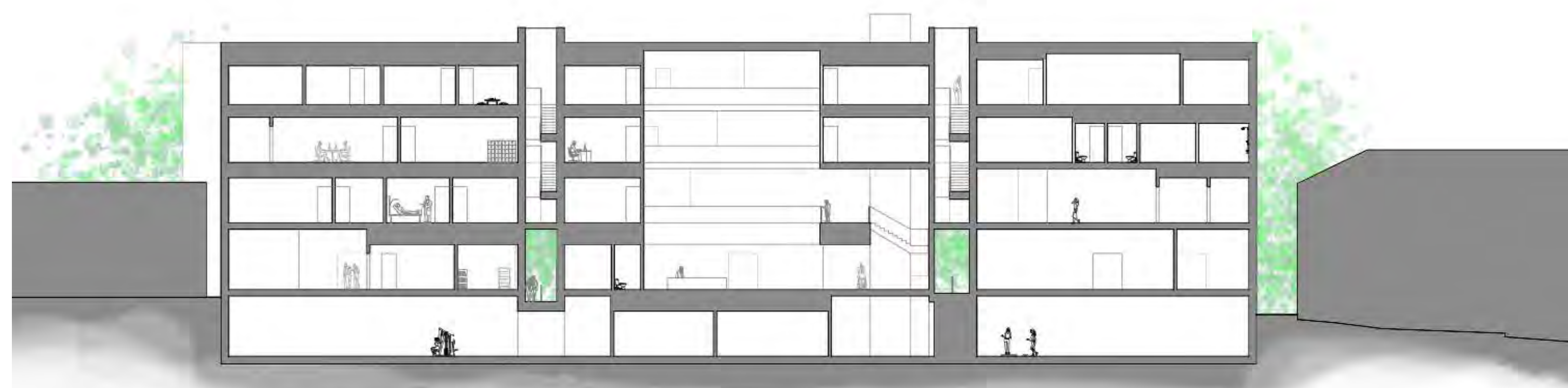
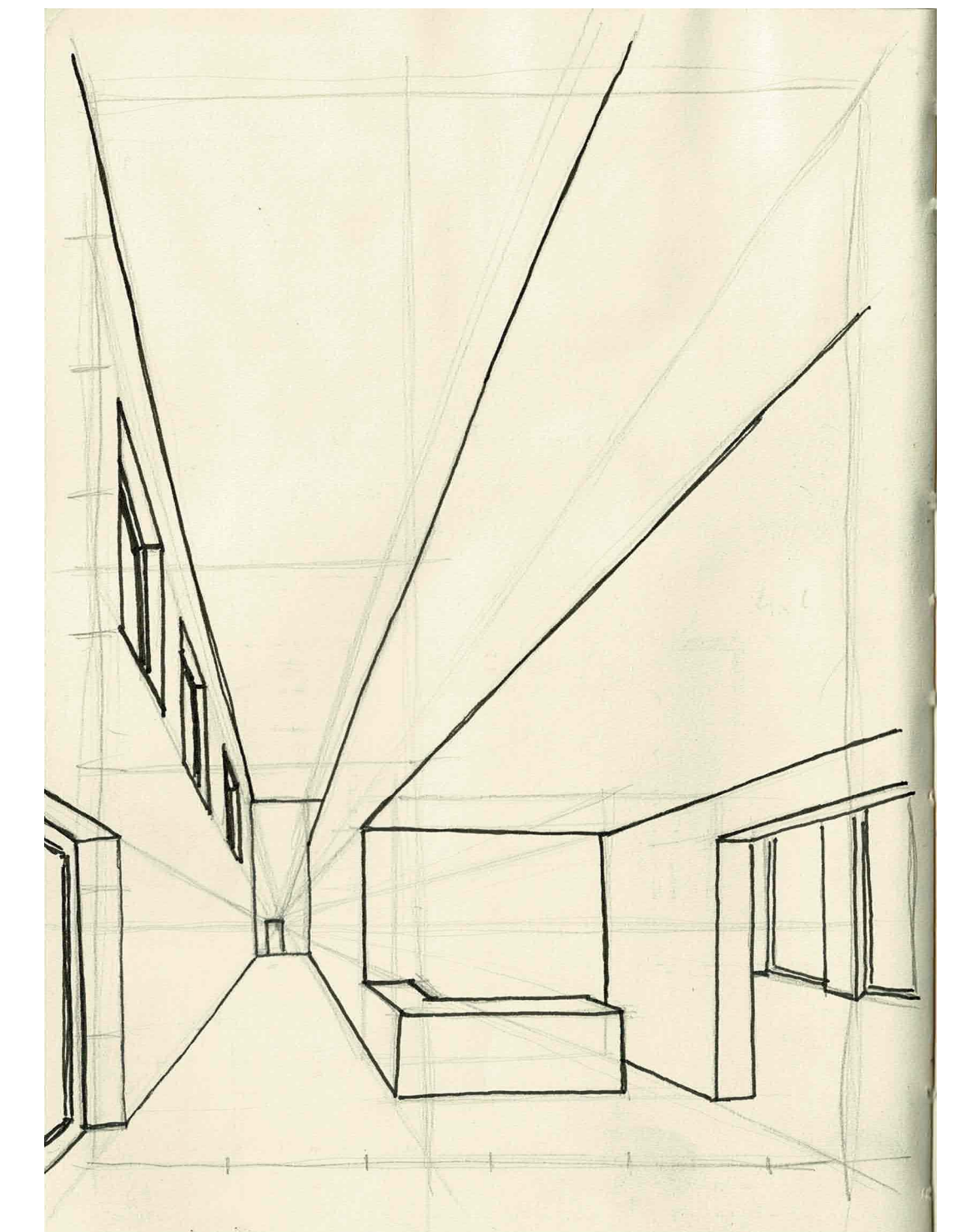
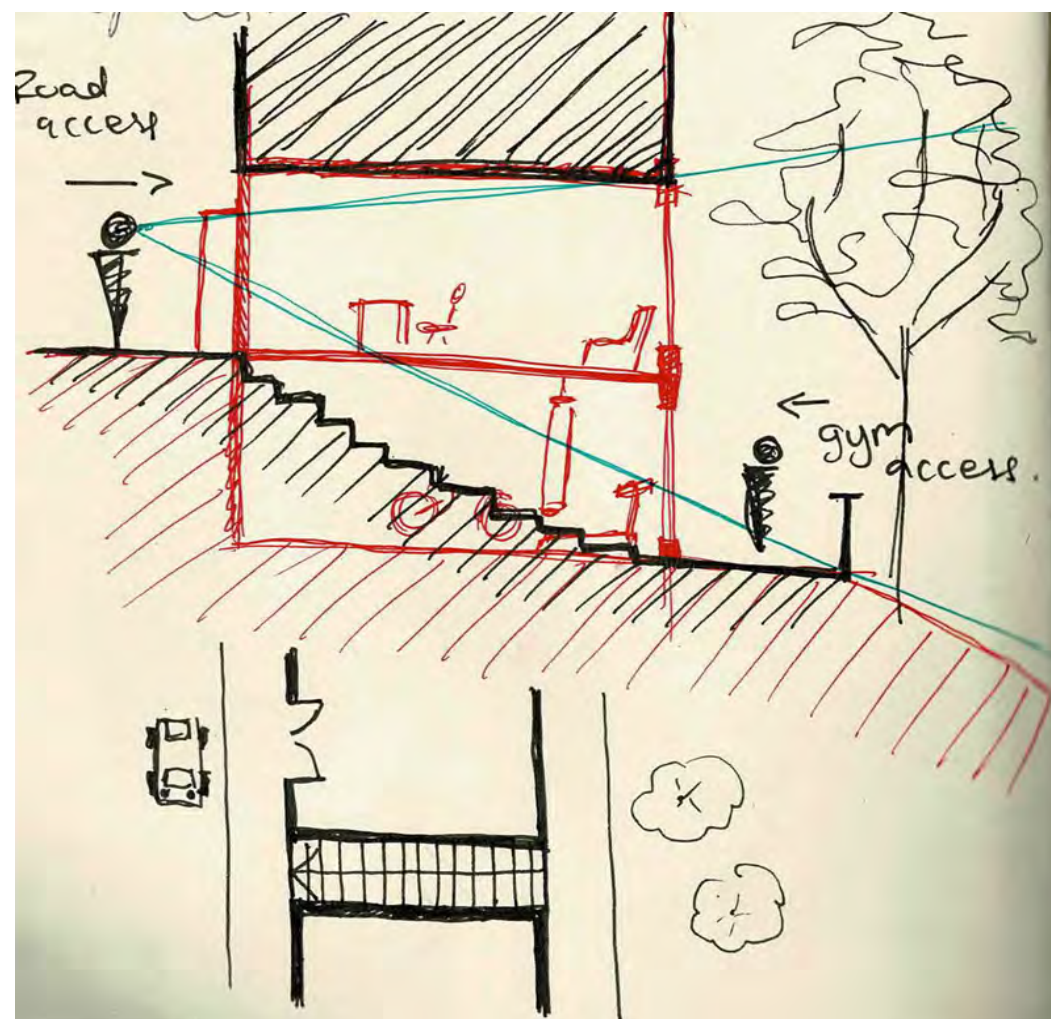
“My architecture is not conceived in plans, but in spaces (cubes). I do not design floor plans, facades, sections. I design spaces.”

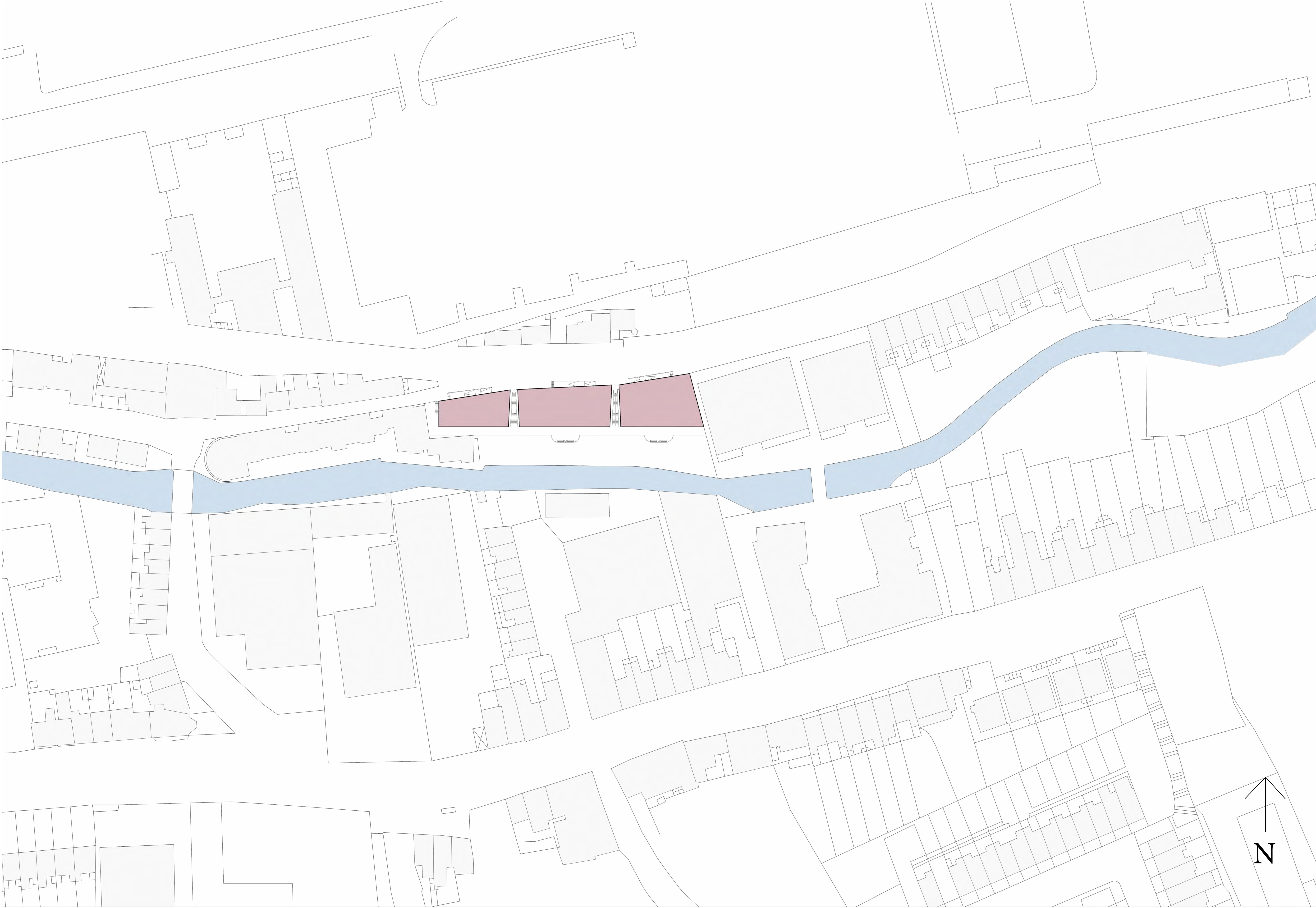
This led to my preoccupation with space and the hierarchy of the spaces I'm creating- this led to the mixed ceiling heights in my project; to create a play in the volumes of the rooms.

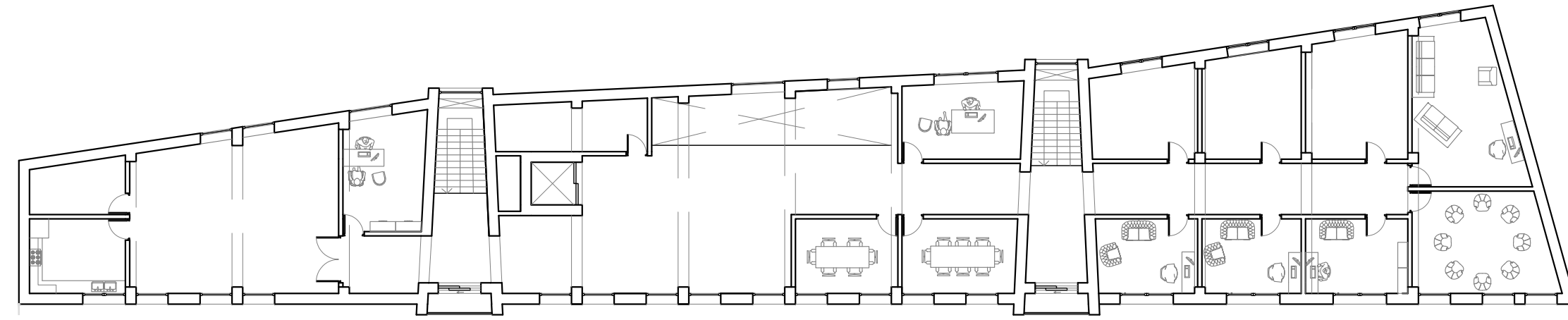


Another important design consideration for this project was the connection(s) between Kilmainham Lane and the wildlife corridor behind the site; for both humans and nature.

Upon visiting the site it became clear of how this could be achieved- through stairs that cut the through the site and provide passage and views.

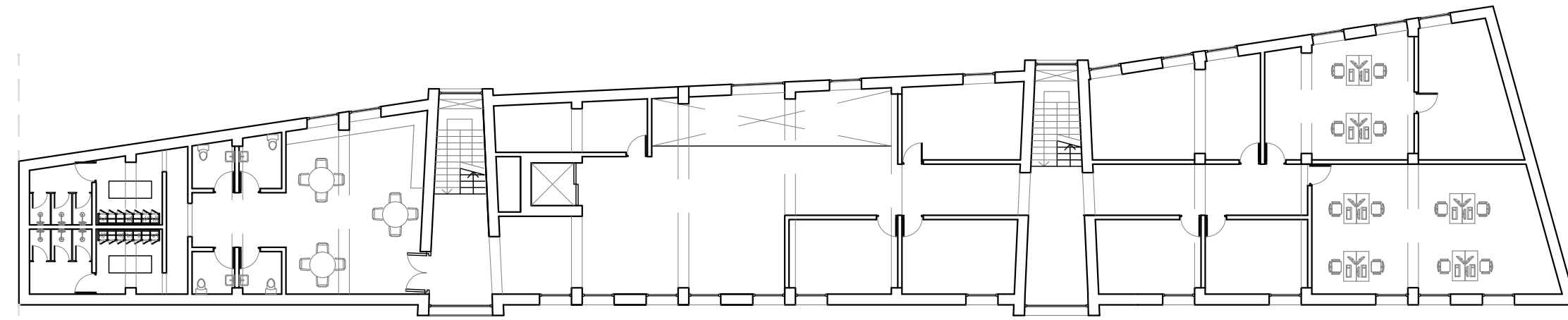






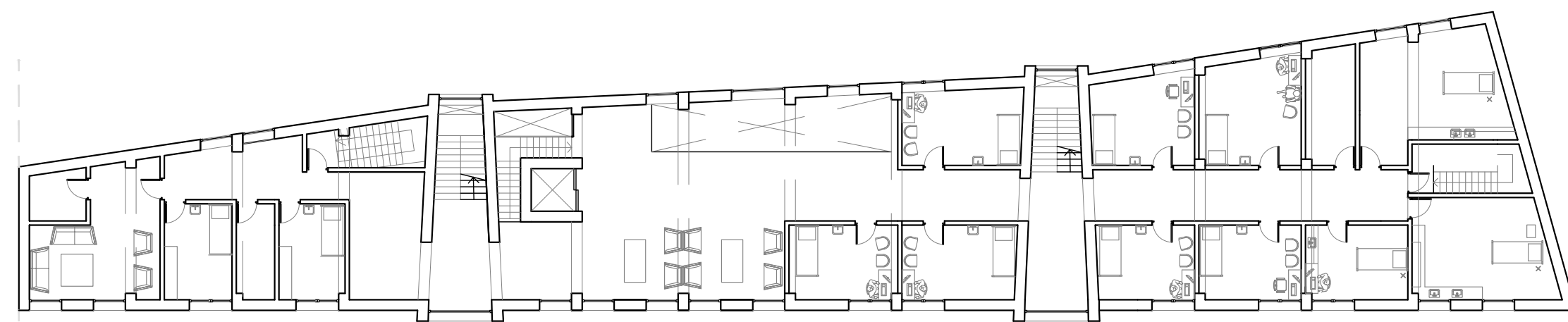
THERAPY

The therapy rooms are situated on the top floor for privacy and peace.



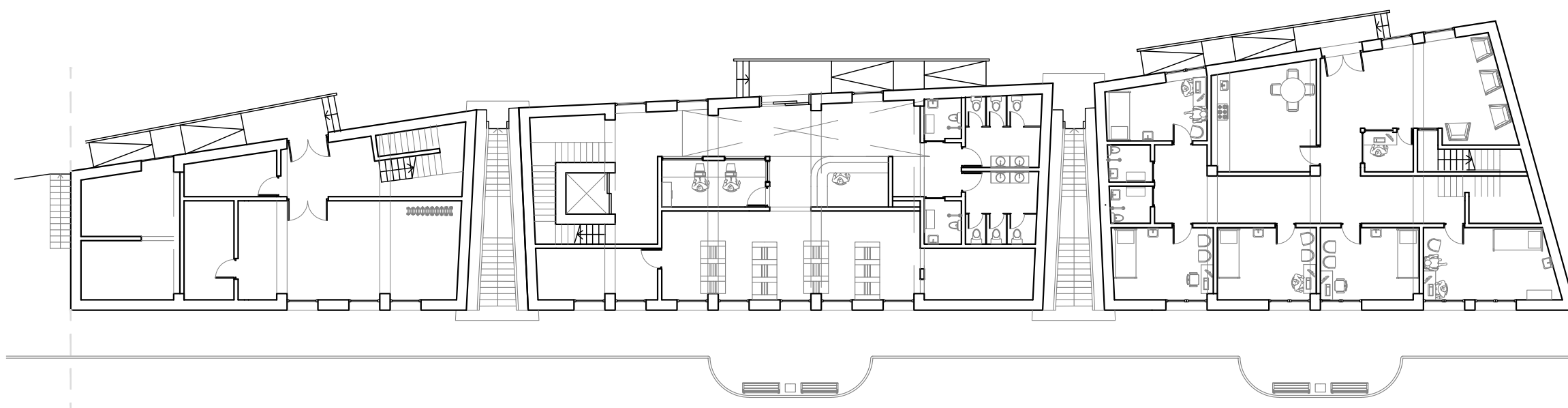
OFFICES/ STAFF FACILITIES

This is the admin floor, with the west wing closed off for staff use; to take a break in the canteen or refresh in the staff showers.



CLINICS AND SURGERIES

The clinics, minor surgery and treatment rooms are on this floor.

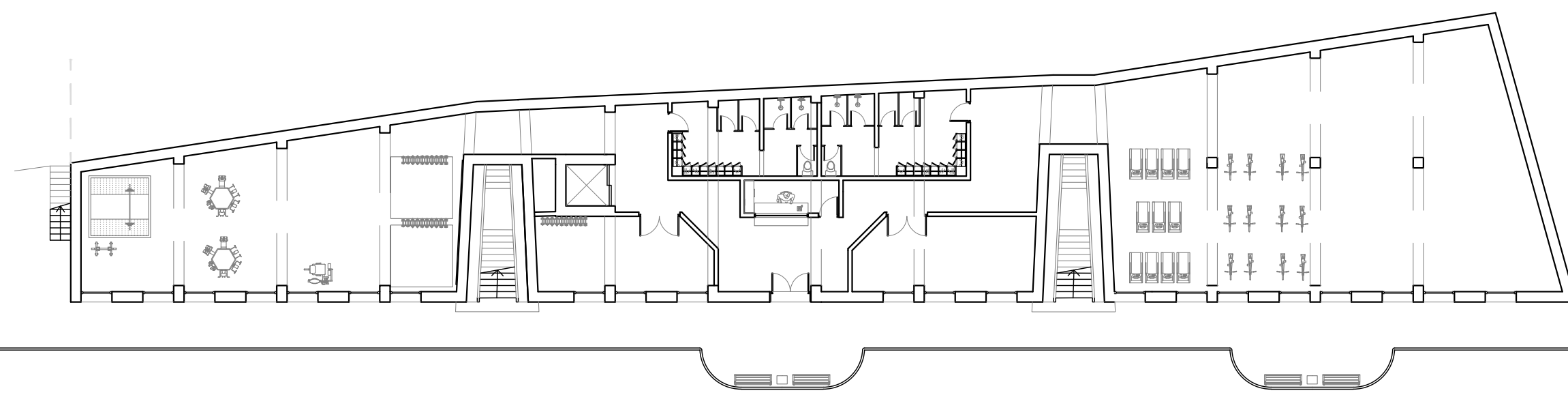


MAIN BUILDING/ GP FACILITIES

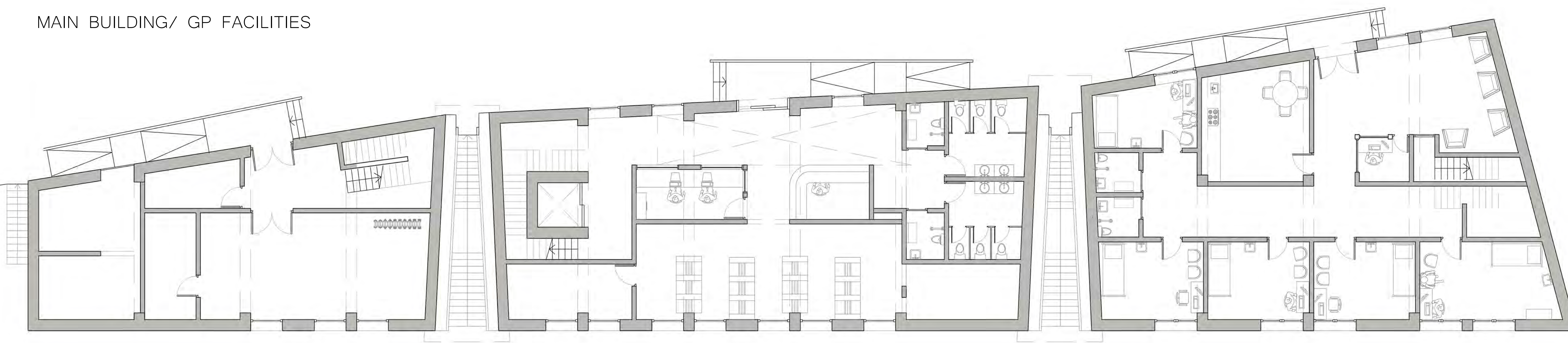
Kilmainham Lane street level. Bulding is split into three by stairs that access the wildlife corridor behind the building.
 The west wing is dedicated to physiotherapy and building stores.
 The central/ main building is where the main reception and waiting areas are situated and access to the elevator.
 The east wing is isolated for GP facilities, so locals could get to their regular appointments hassle-free.

GYM

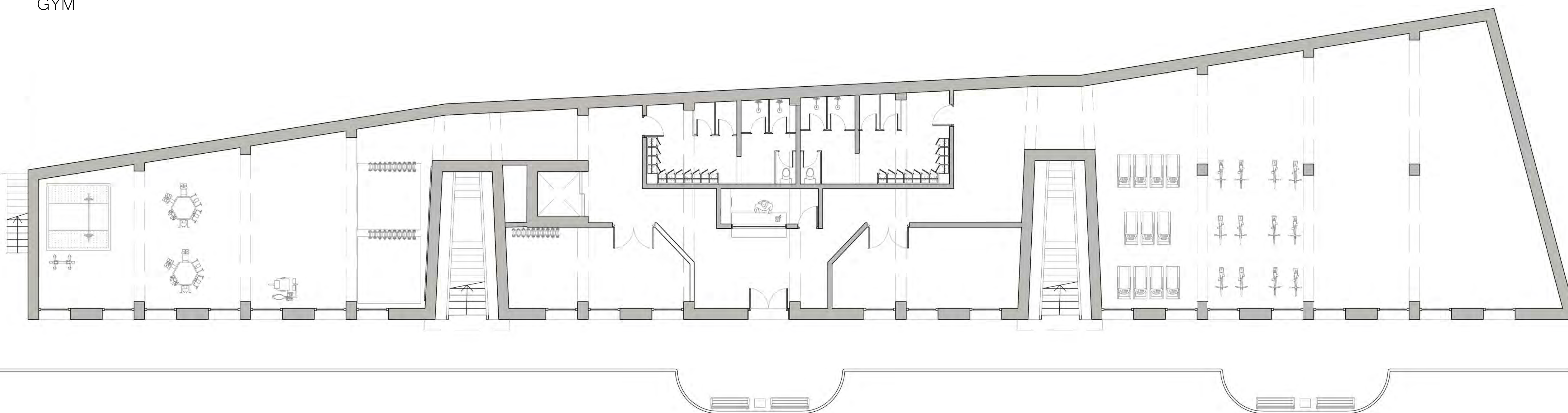
Floor below street level, accesed through elevator or exterior stairs. Also the floor connected to the boardwalk hovering over the wildlife corridor.



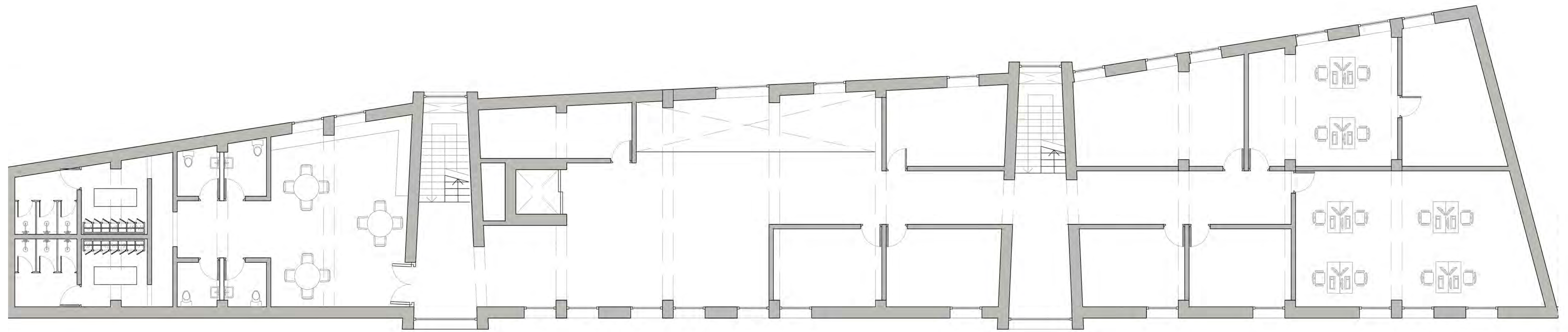
MAIN BUILDING/ GP FACILITIES



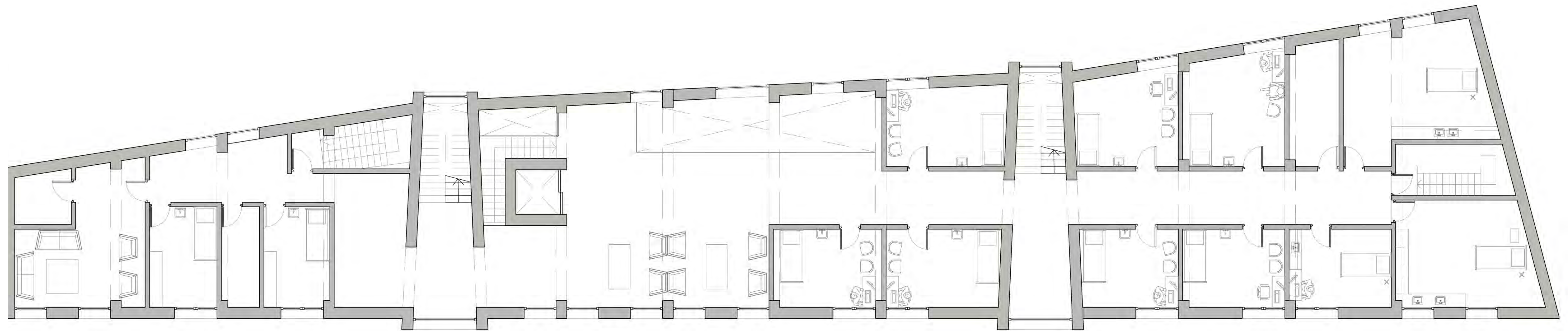
GYM



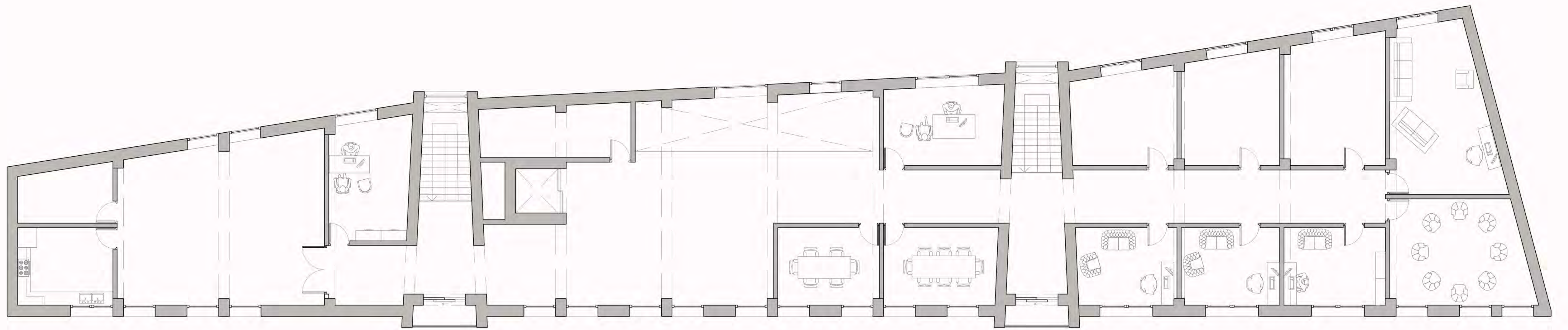
OFFICES/ STAFF FACILITIES

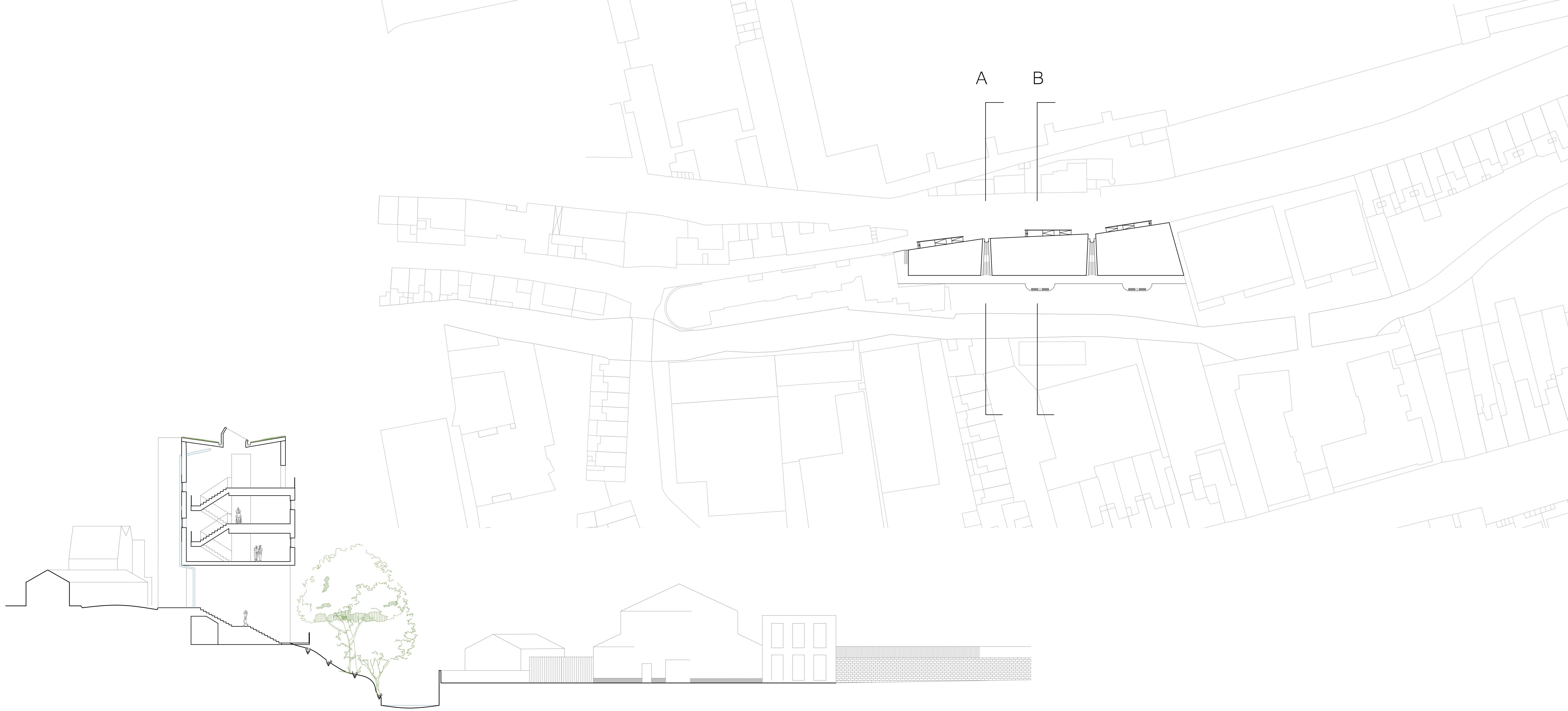


CLINICS AND SURGERIES



THERAPY





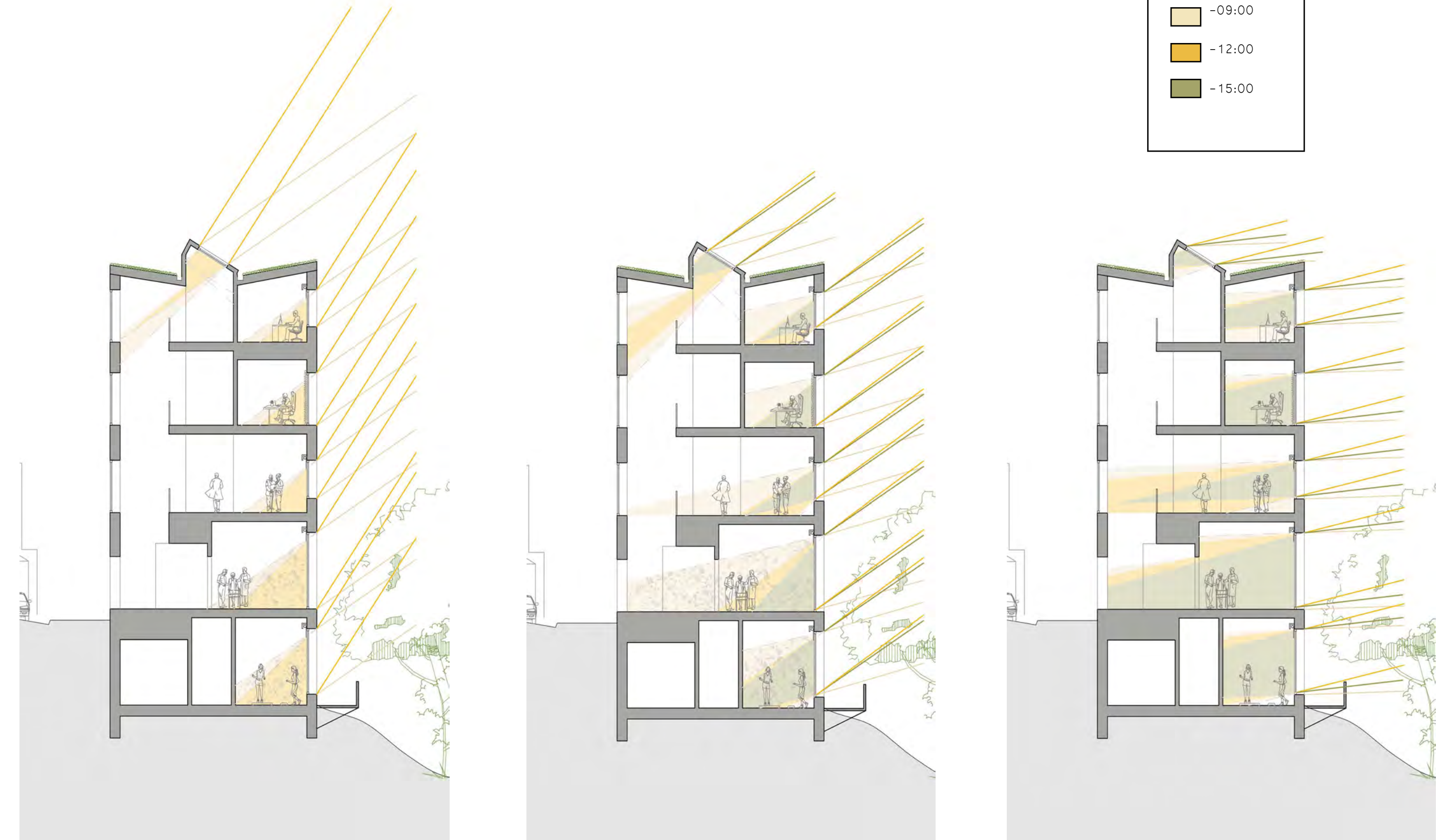
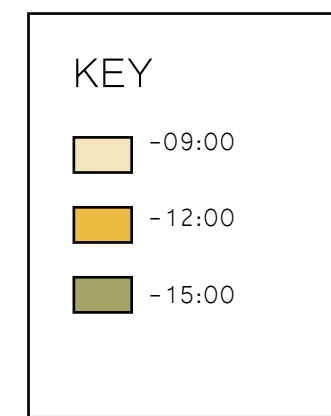
SECTION A 1:200



SECTION B 1:200

ENVIRONMENTAL CONSIDERATIONS

SUN ANGLE ANALYSIS

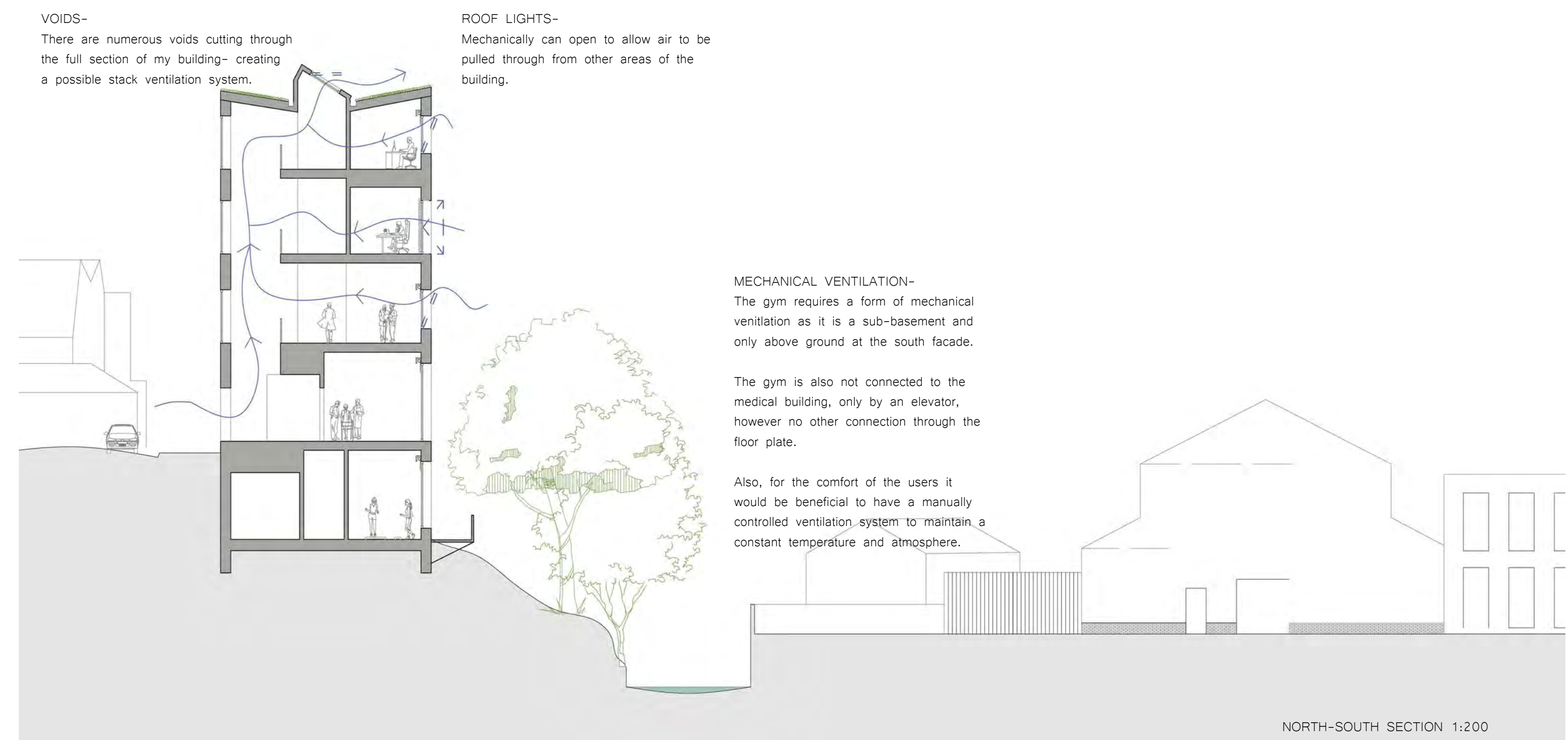


Summer Solstice 1:200
(21/06/2020)

Autumn Equinox 1:200
(21/09/2020)

Winter Solstice 1:200
(21/12/2020)

WIND ANALYSIS



NORTH-SOUTH SECTION 1:200

SOLAR ANALYSIS

NORTH VS. SOUTH-
Northern windows are set to the exterior of the wall while the opposite applies for the Southern windows; another attempt to prevent glare.
However the Northern facade contains less openings to prevent unnecessary heat loss.

ROOF LIGHT-
In many areas the central corridor has no openings, the rooflight catches southern light.
Also serves ventilation purposes.



SHUTTERS-
Fitted to singular office rooms where occupant has full control over light/ view.



ANTI-GLARE BLINDS-
Motorized blinds that can be controlled by staff. Fitted to public areas, ie; waiting rooms, gym, large offices.
They are reflective; glare is deflected from entering the room, yet they remain see-through.

TREES-
The site contains heavy planting on the south slope- most trees are estimated to be 13/15m. tall.
This dapples the light coming in to at least the bottom two floors; windows on these floors are larger, yet anti-glare measures are still taken to prevent glare in the winter when leaves have fallen.

CALCULATIONS-

South Facade Glazing:

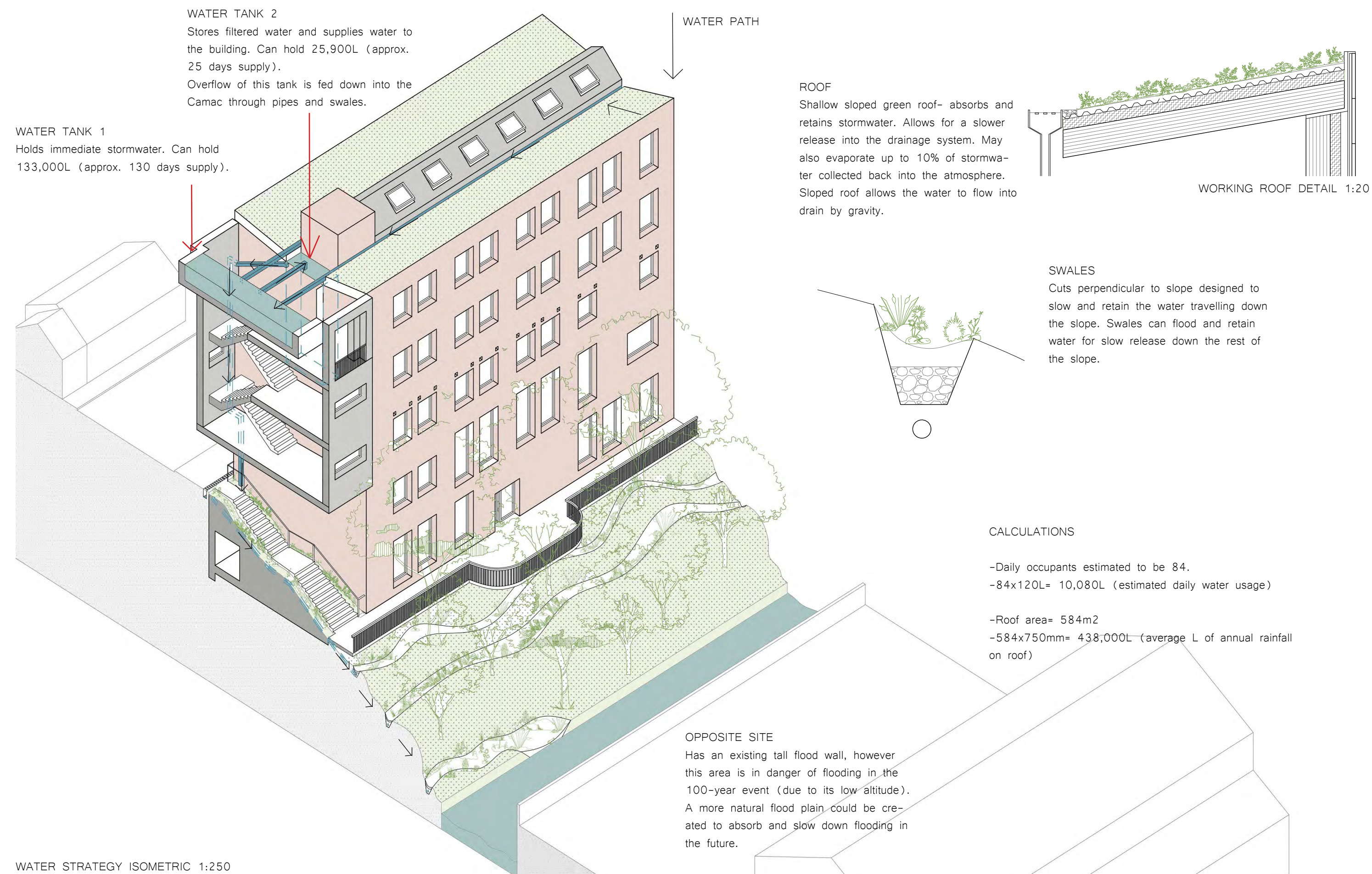
S. Facade area= 1,511.1m²
Glazing area= 261.76m²

1,511.1 / 261.76= 17.3%
17.3%= percentage of S. facade glazed

East/ West Elevations contain minimal/ close to no glazing due to the project's proximity to other buildings.

NORTH-SOUTH SECTION 1:200

WATER STRATEGY

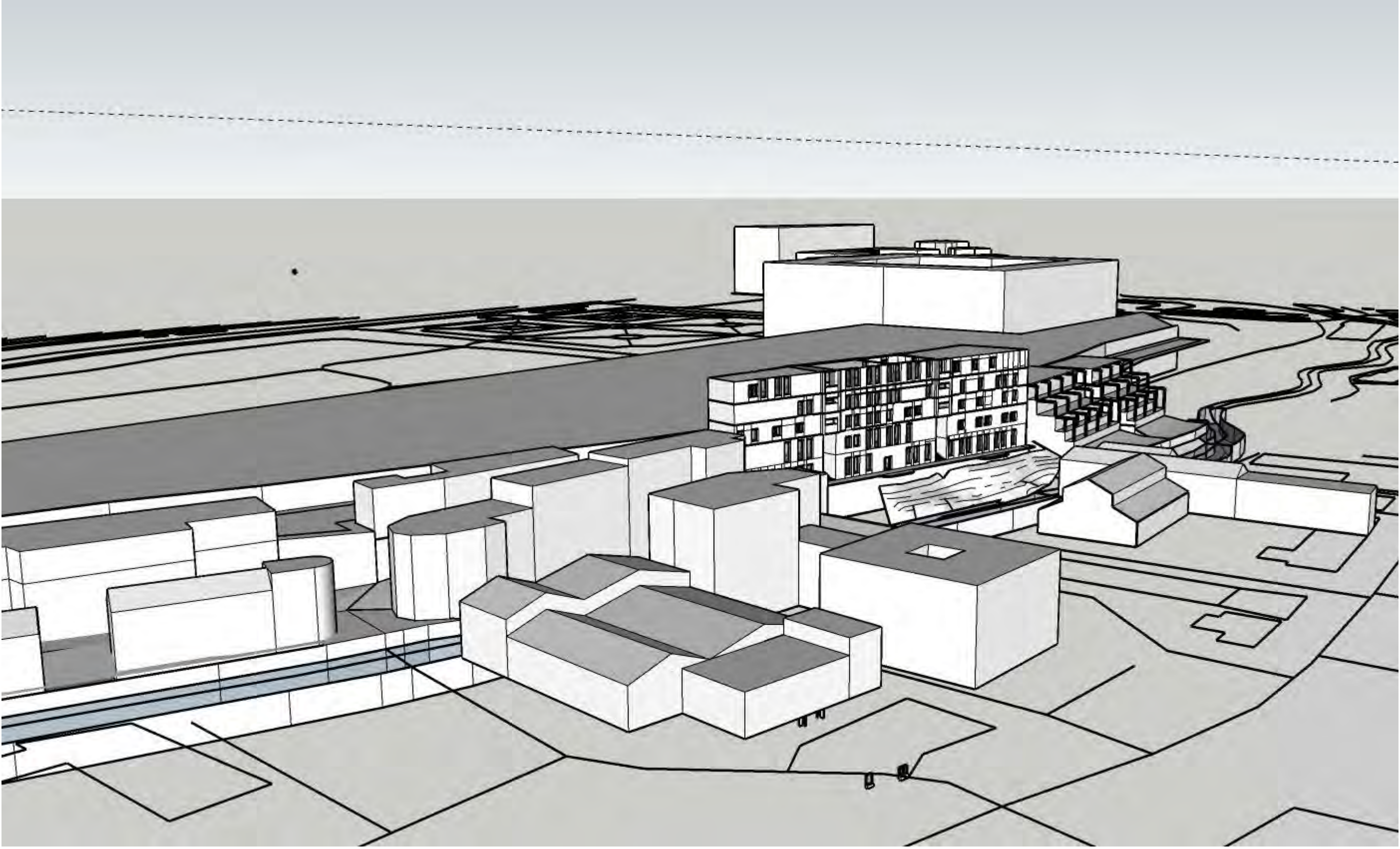


WATER STRATEGY ISOMETRIC 1:250

VIEW OF SOUTH ELEVATION (FROM OPPOSITE THE CAMAC)



SITE SCALE VIEW



STREET VIEW (FROM KILMAINHAM LANE)

