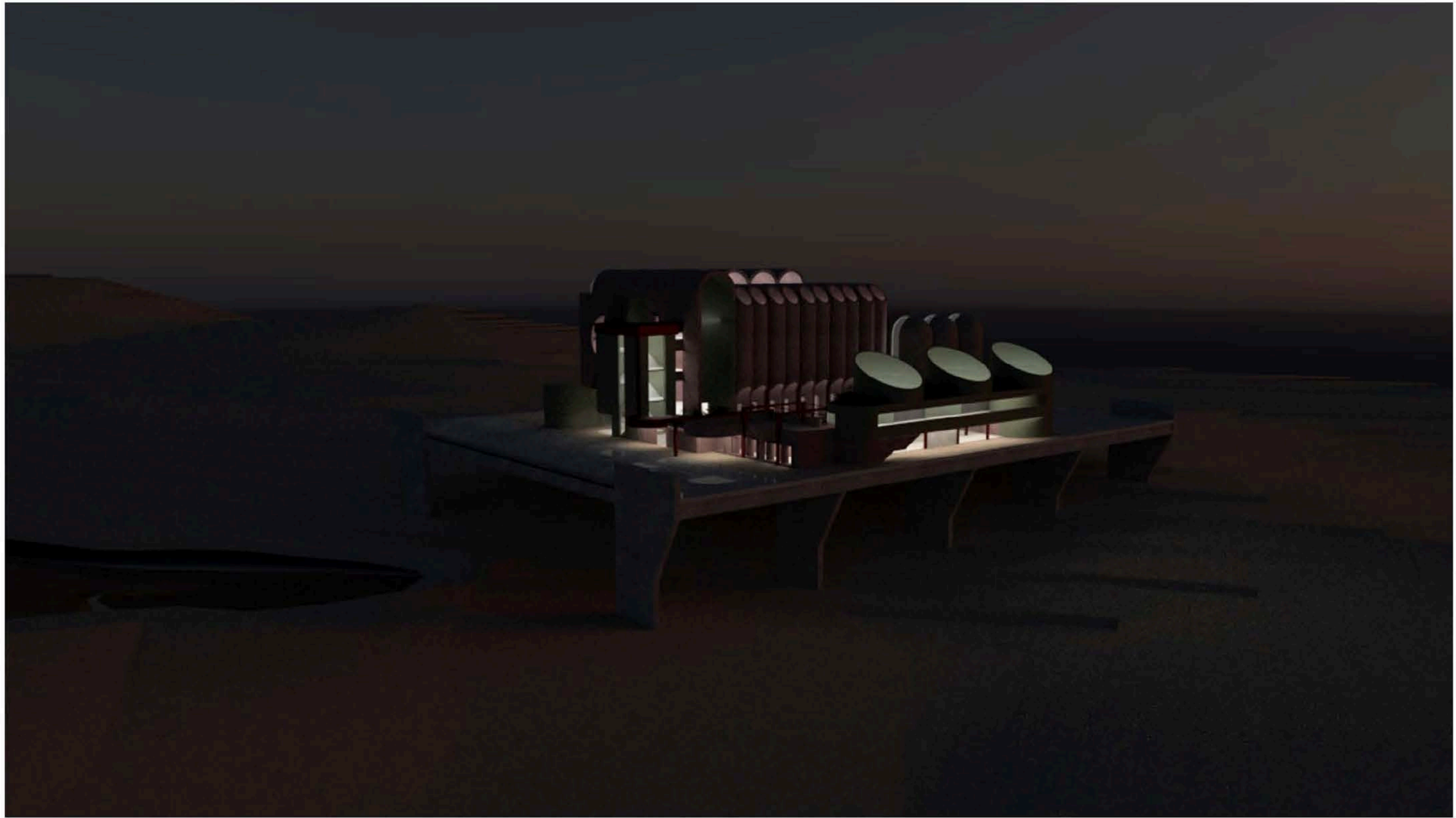
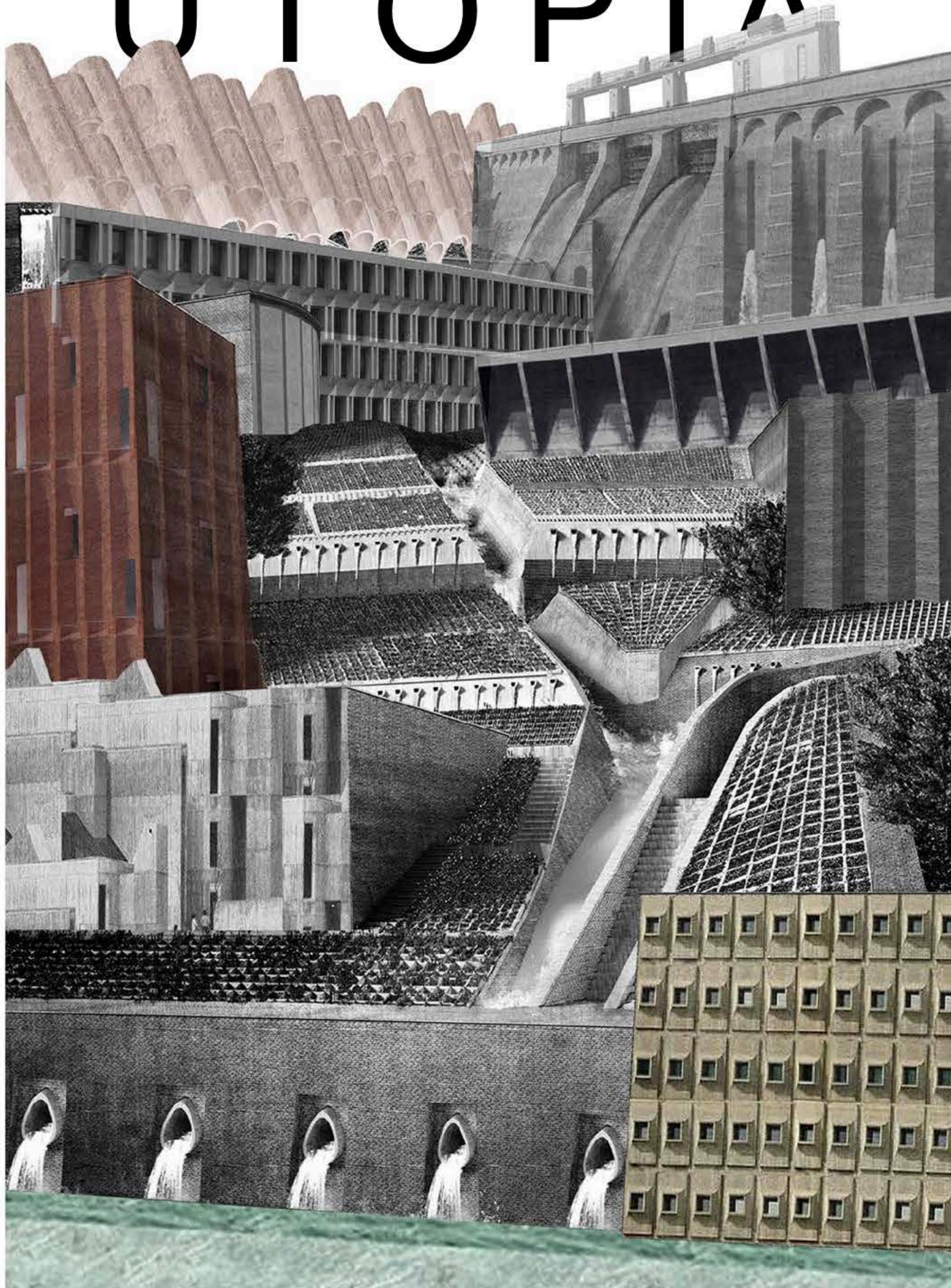


Education is not about the classroom
Education is about understanding the world we call home,
the people we share it with and the relationships that come
from the opportunity of learning.



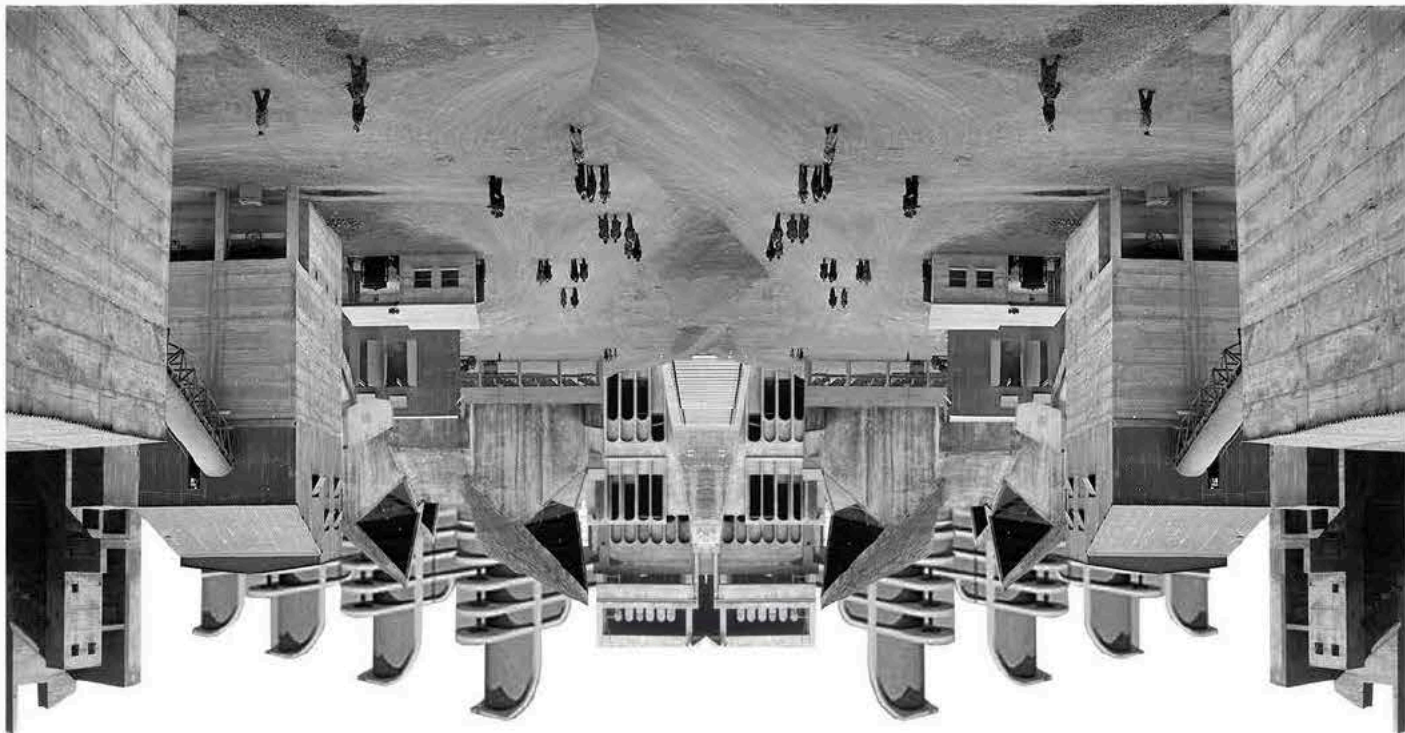
UTOPIA



We stand on the verge of a new world, the end of cheap fossil fuels, the end of a stable climate and the end of architecture that relies on the above.

What if we were to challenge the preconception we have for the existing infrastructures that surround us.

What if these structures could do more?



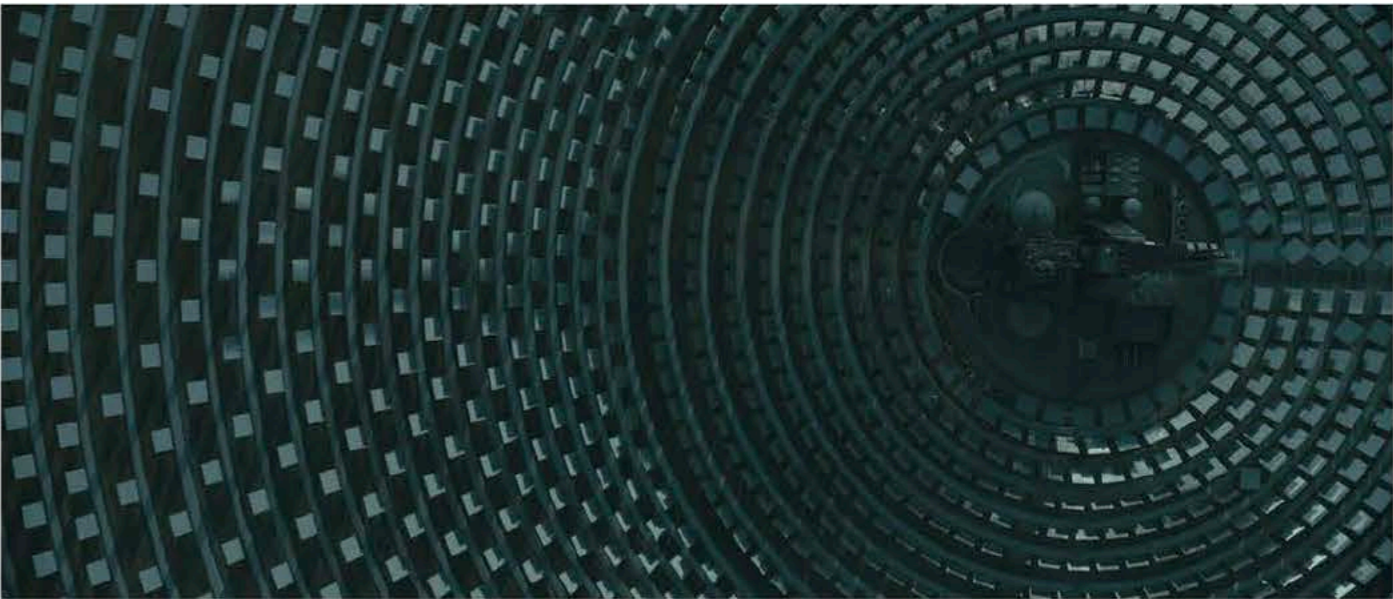
'We used to look up at the sky and wonder about our place in the stars.
Now we just look down and worry about our place in the dirt'.

Interstellar.



Site

References



Red Bog
 Sand & Gravel Pit
 Blessington Co. Wicklow
 Elevation : 219m
 Latitude : 53.18556 7

References



Sand and Gravel Pits

Sand and gravel pits are shallower than rock quarries because the deposits are usually less than the equivalent of one bench of a rock quarry. The material is excavated with a mechanical shovel and is then carried by conveyor to a plant where it is crushed, washed and screened into different sizes.

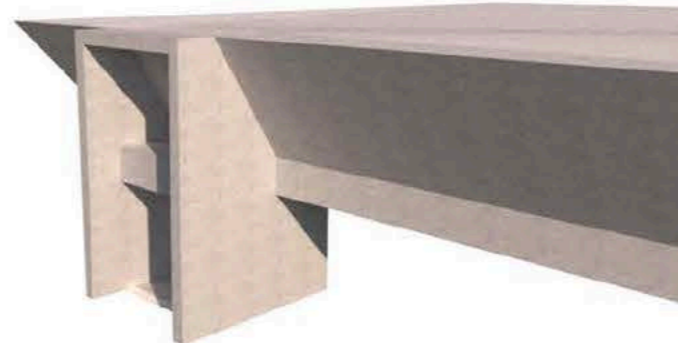
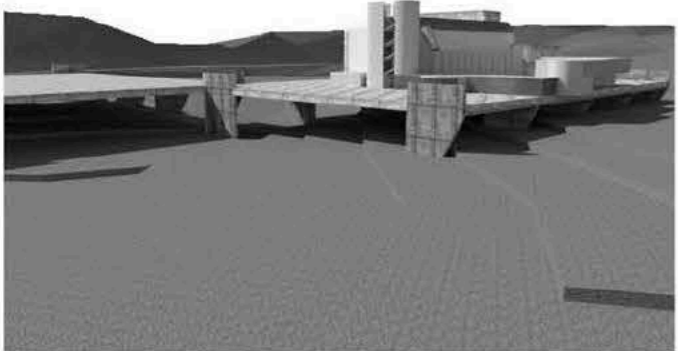
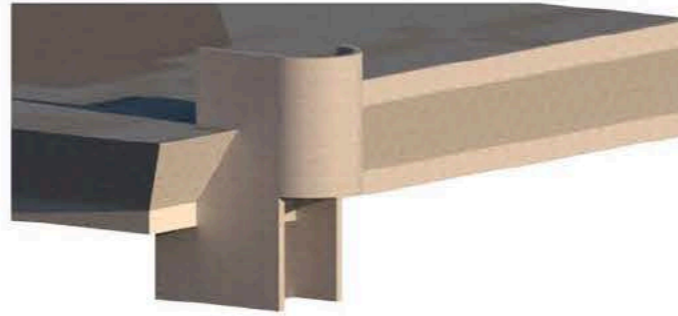
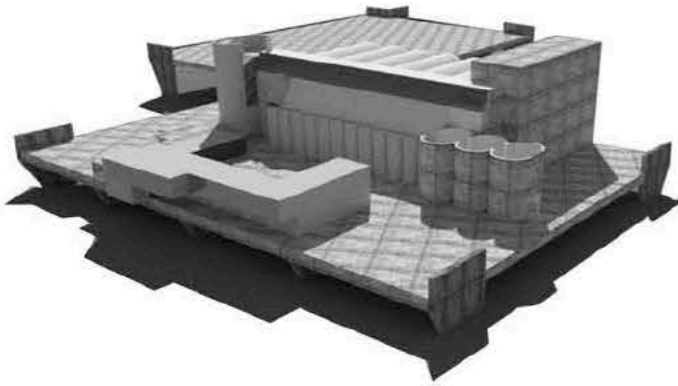
Rocks as Aggregates

'Aggregate' is the term used for rock that has been broken into small pieces, either by nature or by people. Aggregates consist of two main types - crushed rock and sand and gravel. Aggregates are one of the world's great natural resources. Ireland is rich in its reserves of aggregates. First used by settlers and farmers to fence their lands 5,000 years ago, stone and aggregate is as essential to our economic success and development as any other natural resource such as oil, water and food. Our roads and motorways, homes, schools, hospitals, colleges, factories, water and sewerage systems are all built from concrete, 80% by weight of which is aggregate.

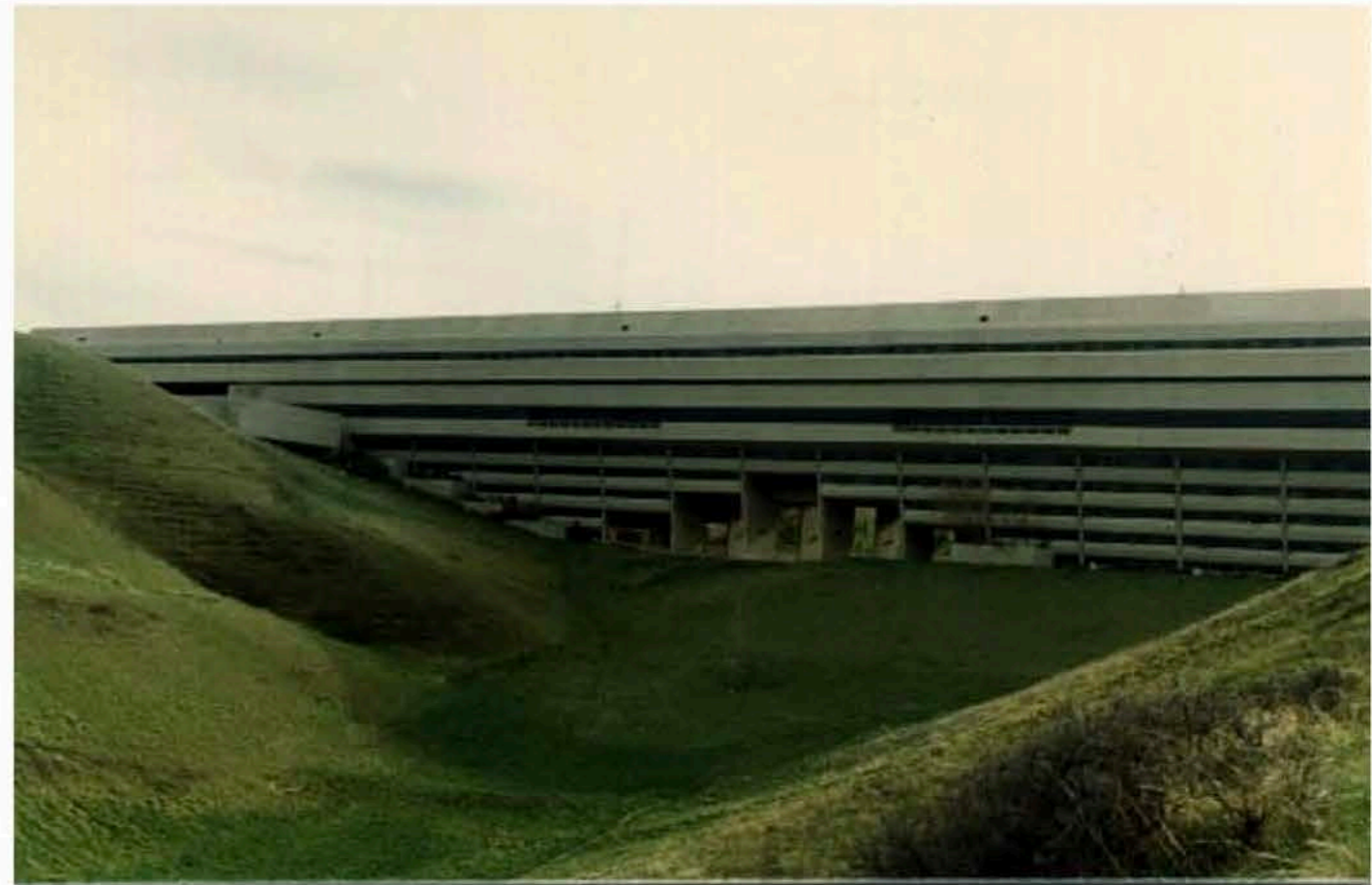


The State will need to produce an estimated 1.5 billion tonnes of aggregates - crushed rock, sand and gravel - to meet housing and infrastructure demand arising from the Government's Project Ireland 2040 plan, according to the Irish Concrete Federation (ICF).

Early Site Massing

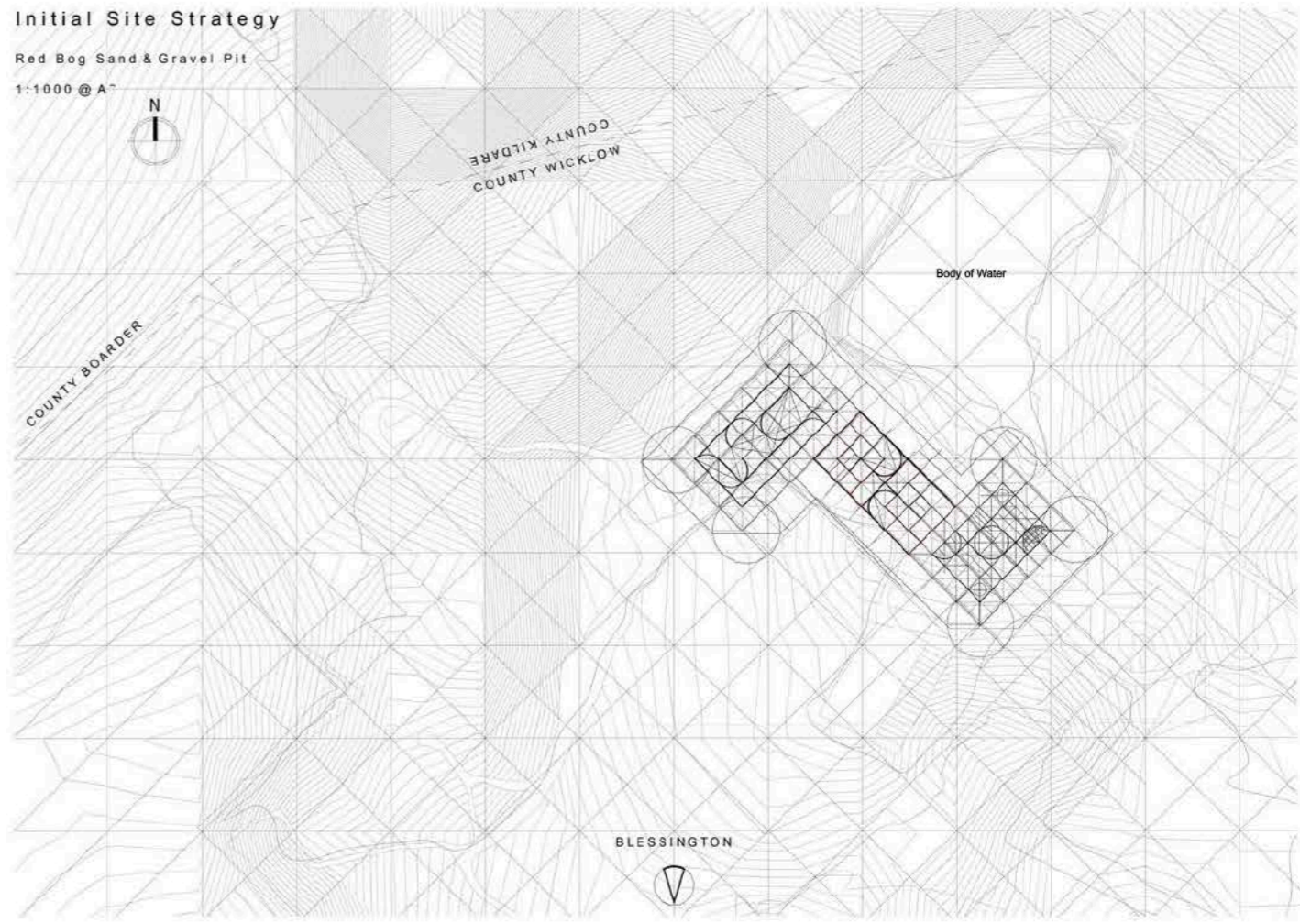


References



RICARDO BOFILL: BEYOND BRUTALISM

Defying Human Scale



Food Co-op Plans

Red Bog Sand & Gravel Pit

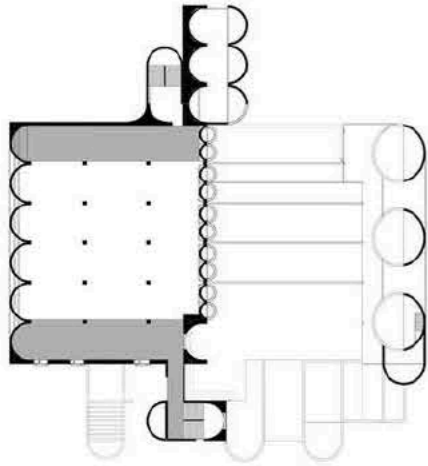
1:200 @ A2

- 1 - Visitors Cafe with views of Herb Garden Surrounding Landscape
- 2 - Cafe Roof Terrace
- 3 - Stairwell - Public & Private
- 4 - Stairs / Circulation - Private
- 5 - Cider Press / Cheese + Yoghurt making
- 6 - Test Kitchen Skylight

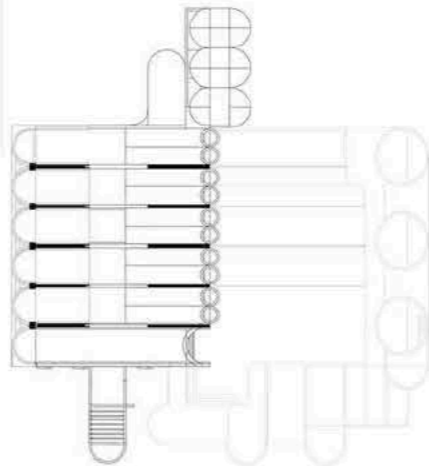
Cafe Level -
Overlooking Herb
Garden / Communal
Space

Grey area - Main Food Co-op Kitchen
Space - for Dispatch

First Floor - 9m eaves



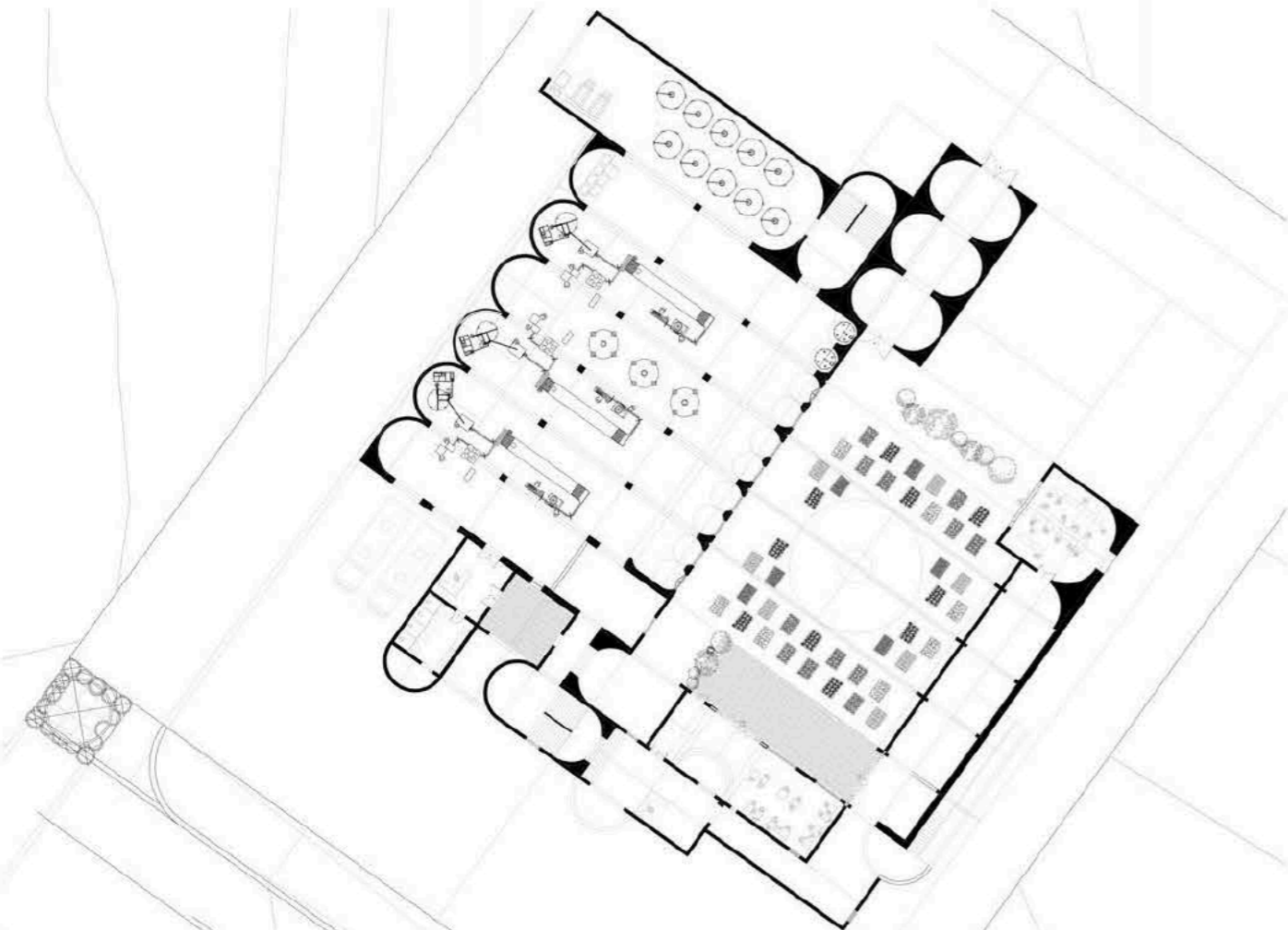
Mezzanine



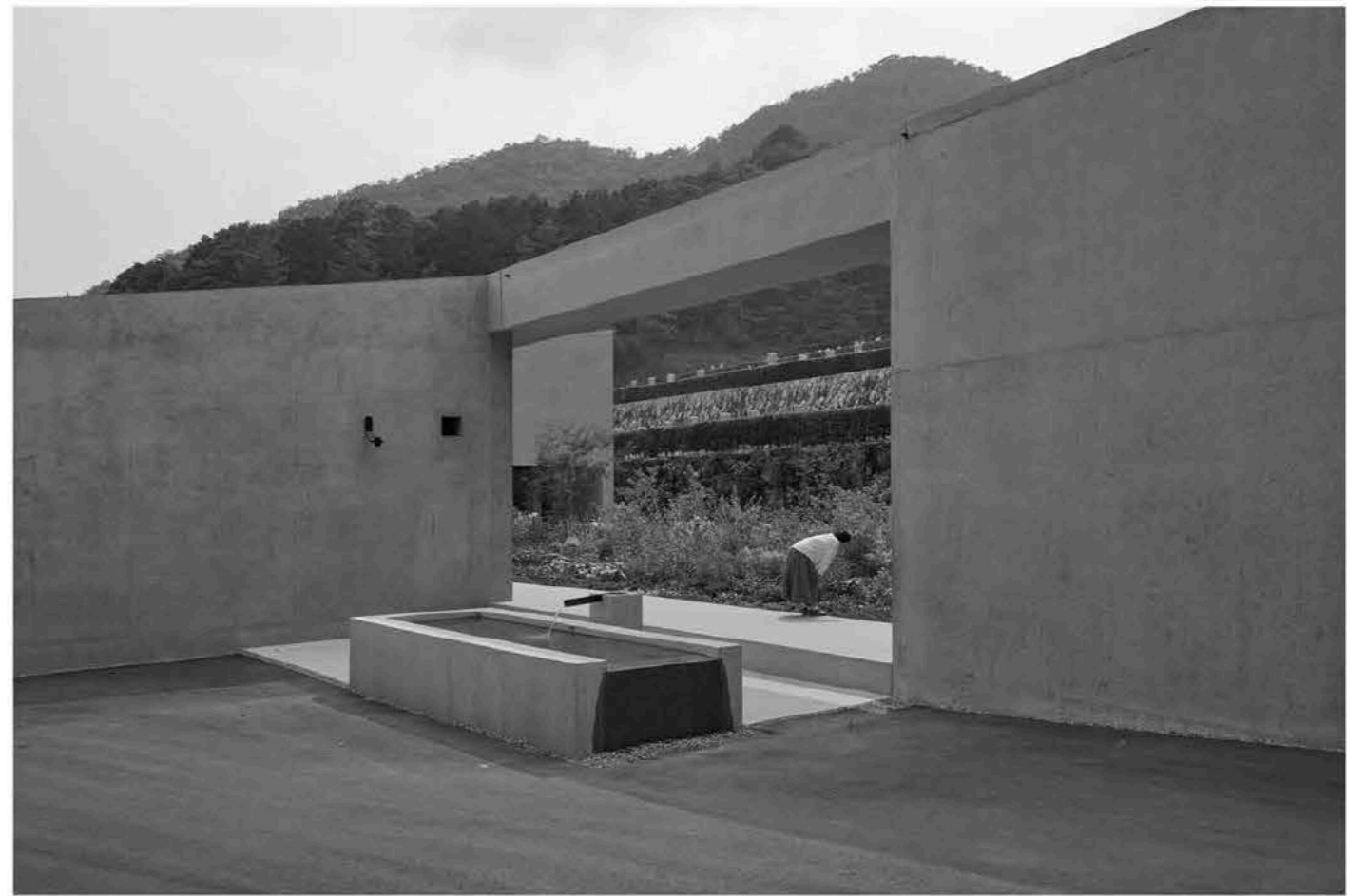
Roof Plan

Grey Areas - Mezzanine Levels for
workers / Overlooking Main Food Co-op
Space

Barrel Vaulted Ceilings with varying
diameters / spans offset from one
another to allow indirect natural light in
accordance with the nature of
assembly and production below



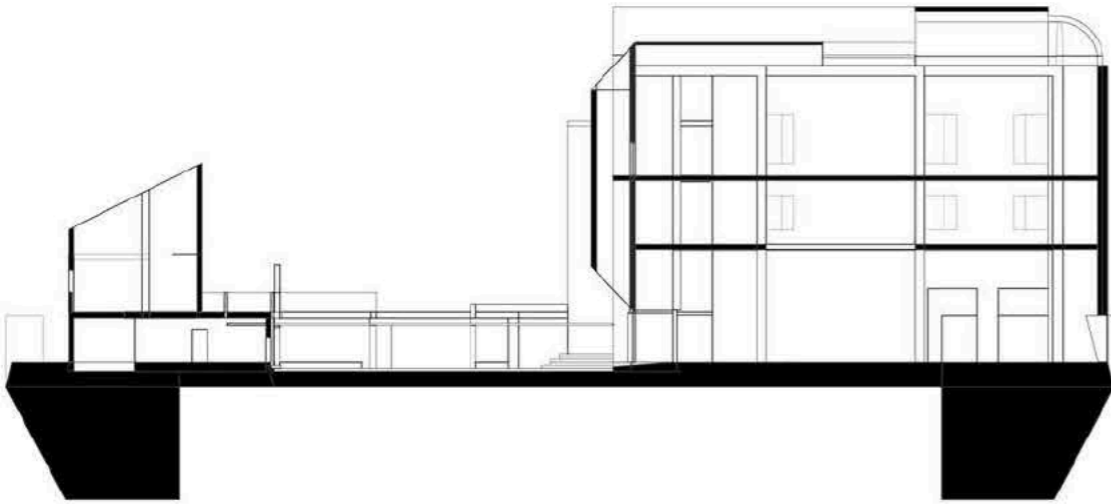
References



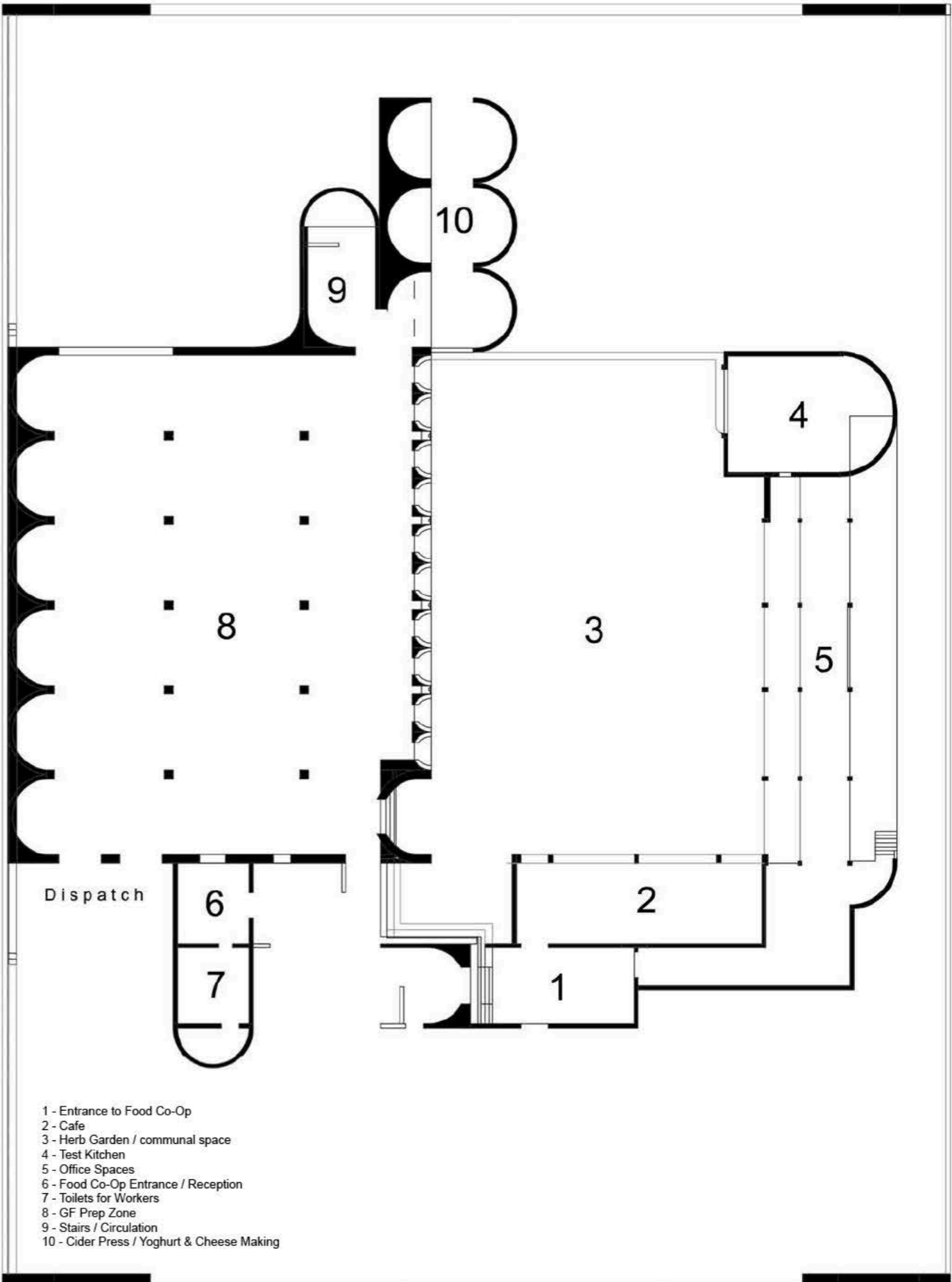
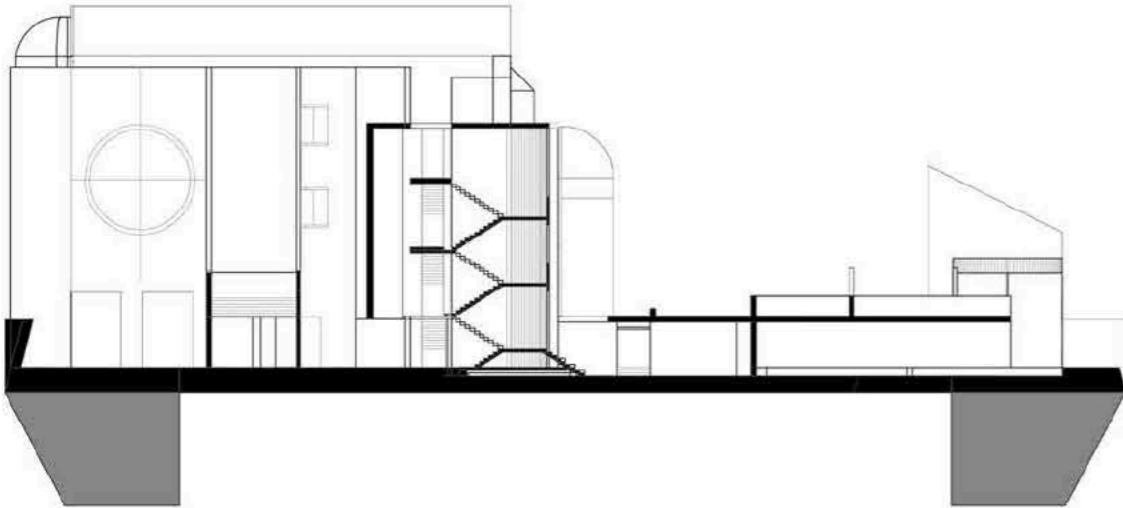
Dublin Food Co-op

Red Bog Sand & Gravel Pit

1:500 @ A3



Section AA - Test Kitchen & Main Packaging & Distribution Space



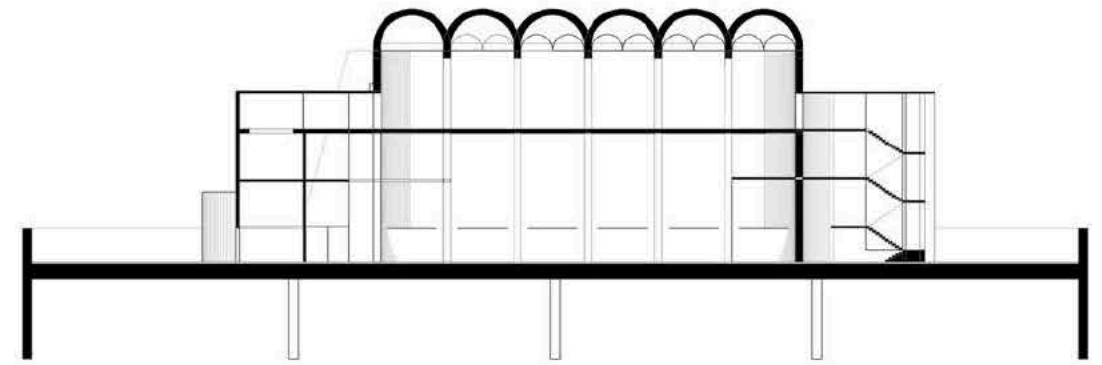
References



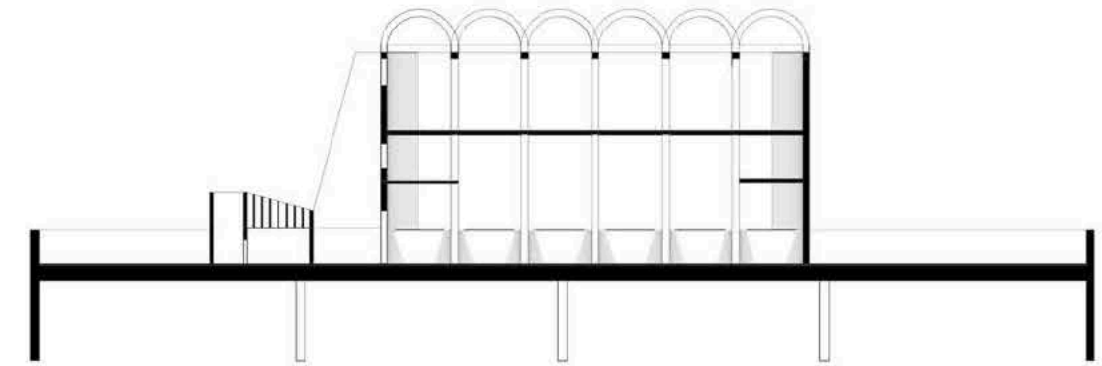
Dublin Food Co-op

Red Bog Sand & Gravel Pit

1:200 @ A3

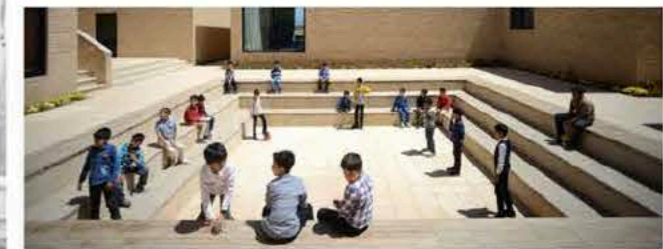
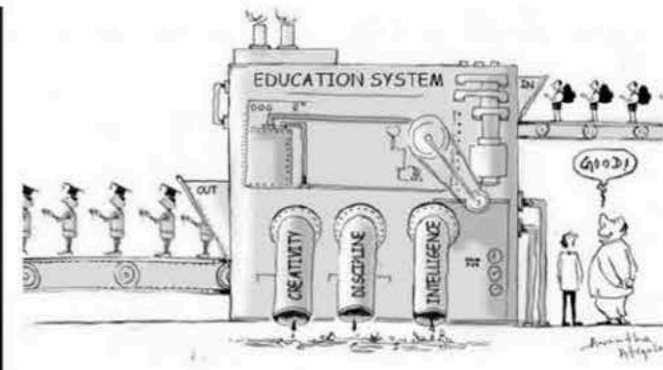


Section CC - Test Kitchen & Main Packaging & Distribution Space Long Section



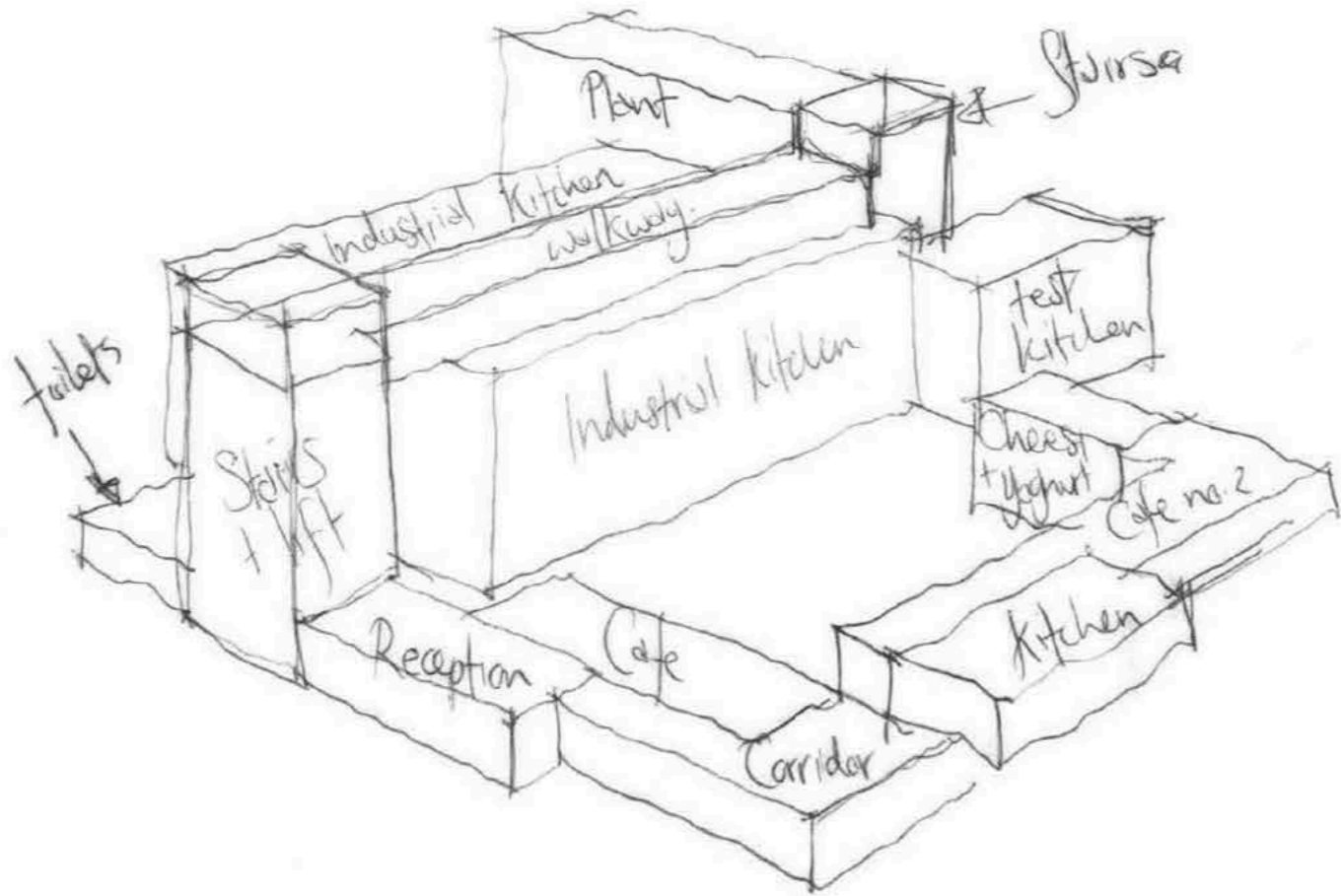
Section DD - Mezzanine and 9m Clear Height Eaters Space





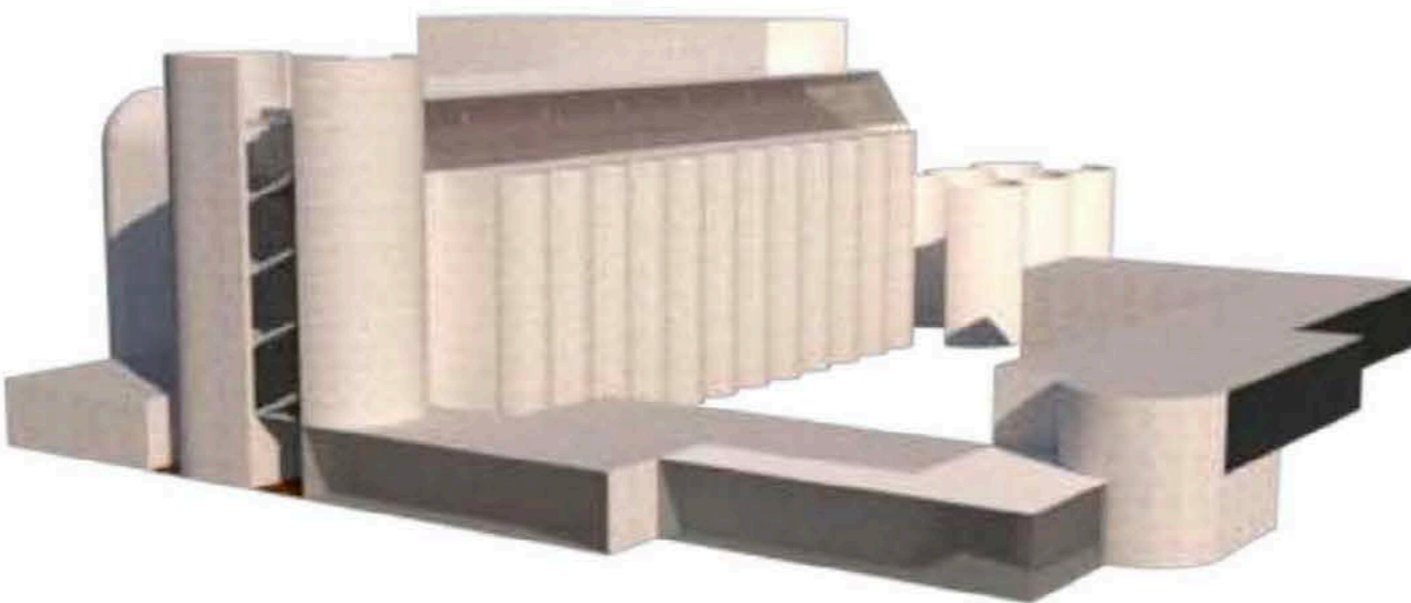
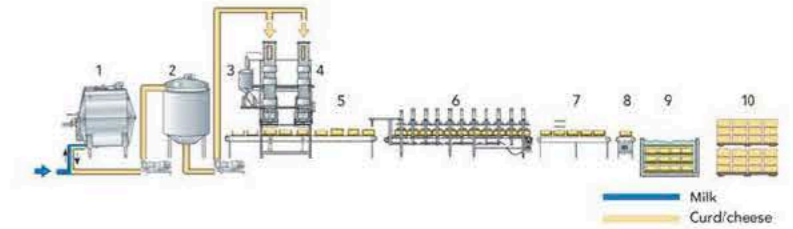
Collage Manifesto - Education





On Site Food Co-op Campus

- A) Main Entrance to Dublin Food Co-op
- B) Reception + Entrance/ Stairs & Lift
- B) Café Ground Floor
- B) Café First Floor (1)
- B) Office (1)
- B) Sheltered viewing terrace workers (1)
- C) Garden (Vegetable) (G)
- C) Garden (Green House) (G)
- B) Chef Kitchen (additional)
- B) Kitchen Building
- B) Development Kitchen
- B) Dispatch
- C) Cheese/ Yoghurt Making
- C) Curd Press
- C) Sheltered Outhouse
- B) Sheltered Viewing terrace for Workers



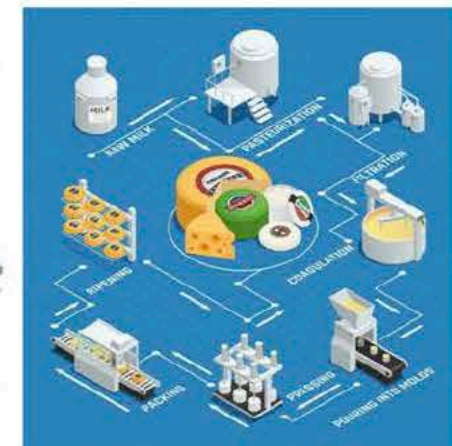
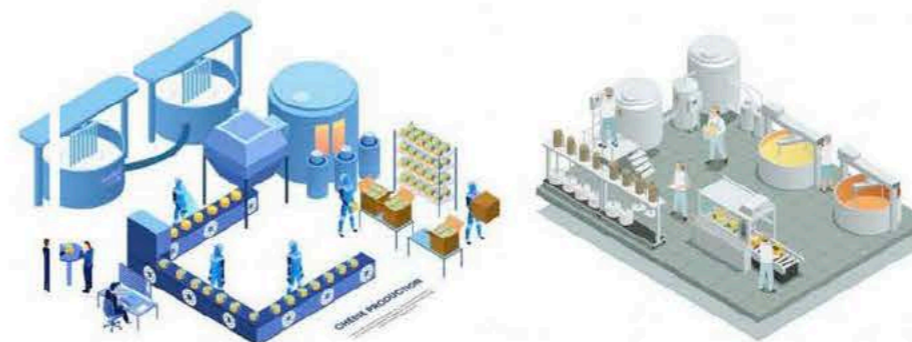
Each Kitchen will have direct access to the organic gardens

Café G) will have clear and scenic garden views

Café 1) will have protected views into the cheese and yogurt making factory (Mezzanine)

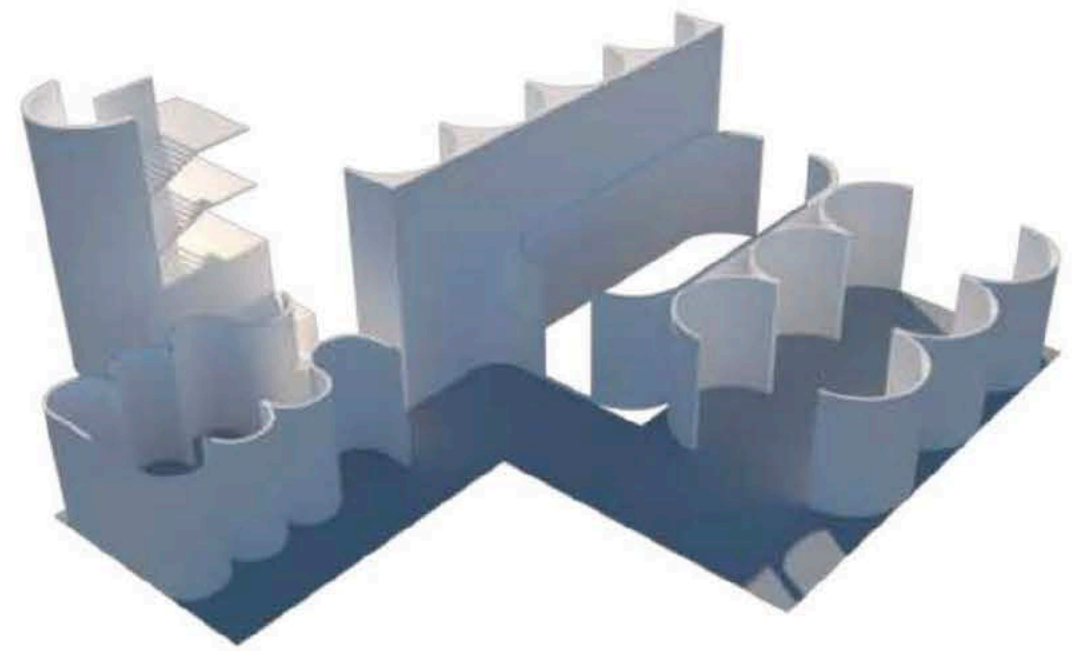
A symbiotic relationship between Café/ Kitchen and Gardens is to be maintained throughout, shared by visitor and worker alike

An emphasis on organic and sustainable living, portrayed through playful scales and direct visual links into Dublin Food Co-Op production, allowing for an honest and harmonious





3D Massing Exploration



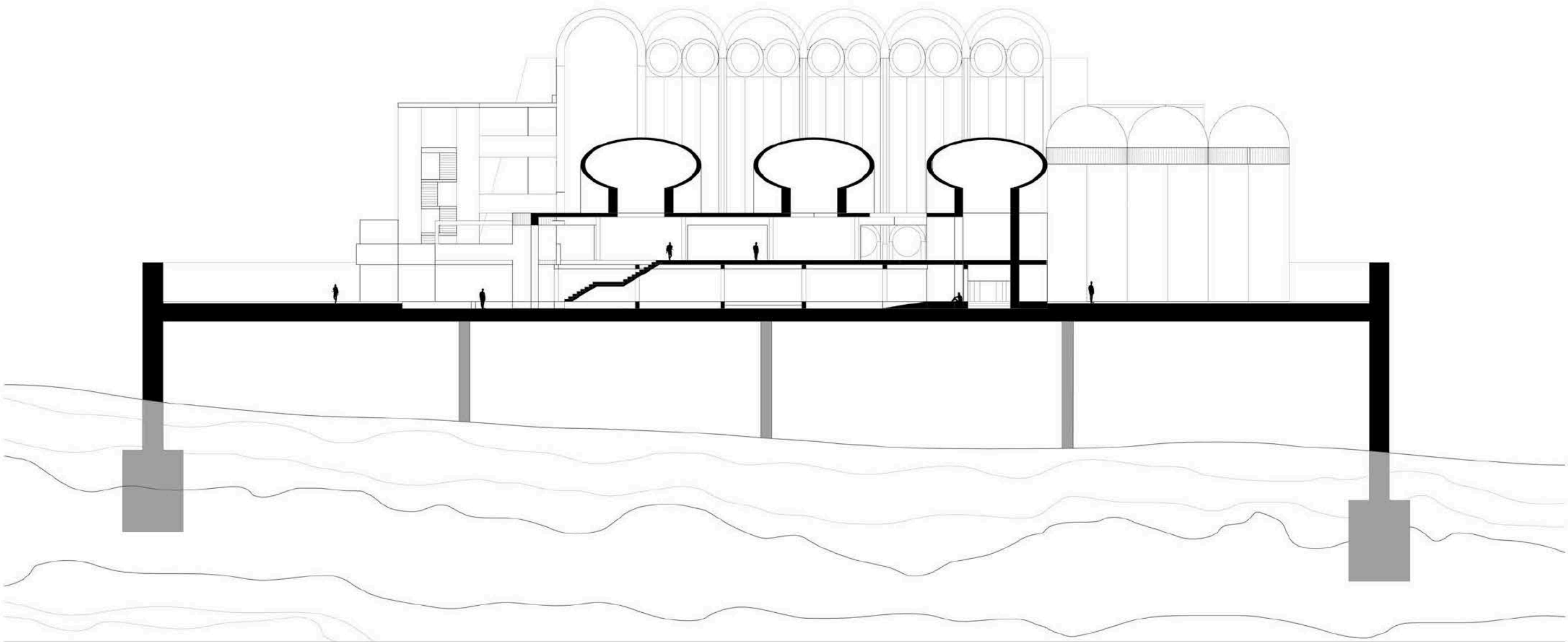
References



Food Co-op Section

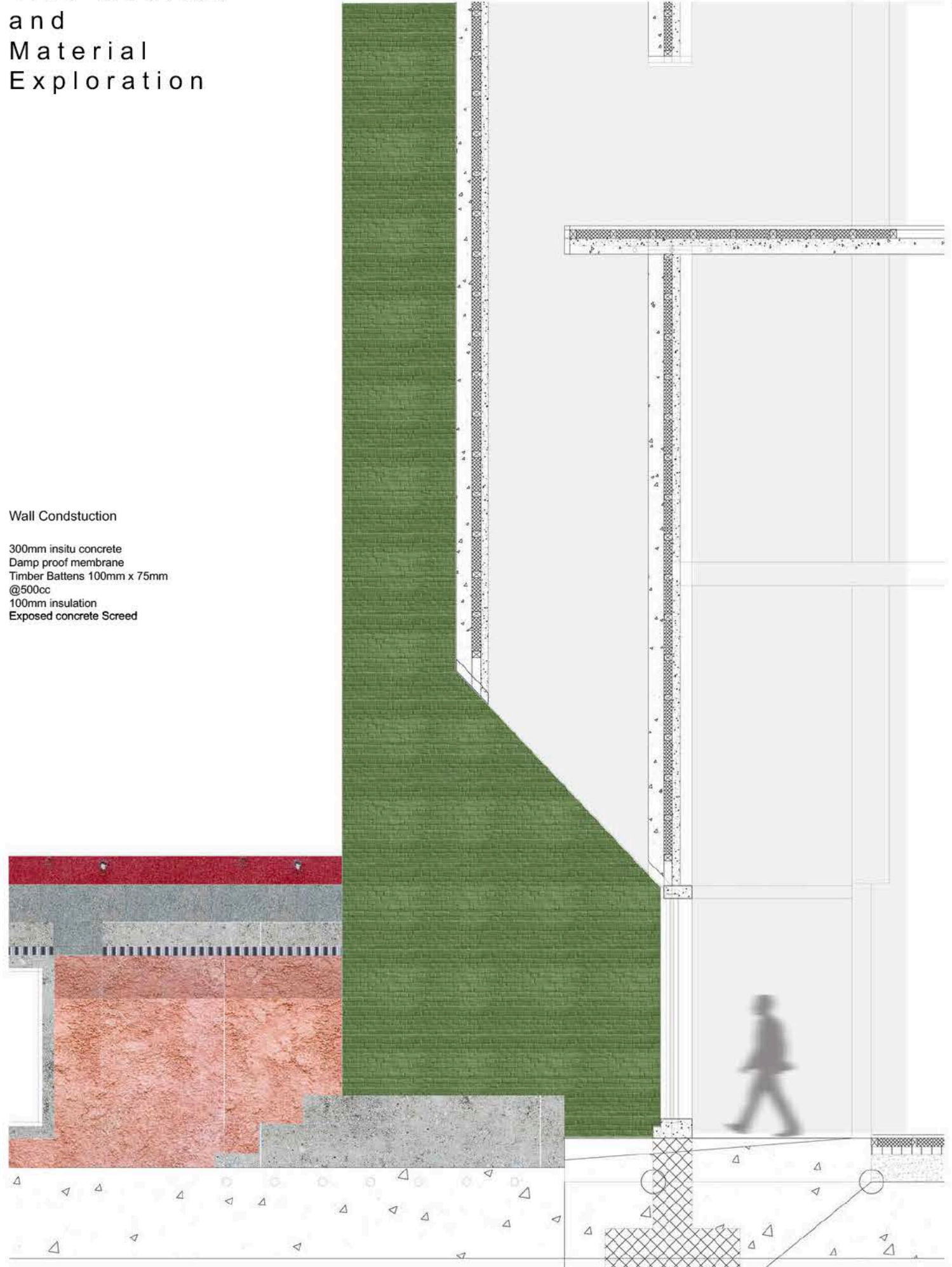
Red Bog Sand & Gravel Pit

1:100 @ A0

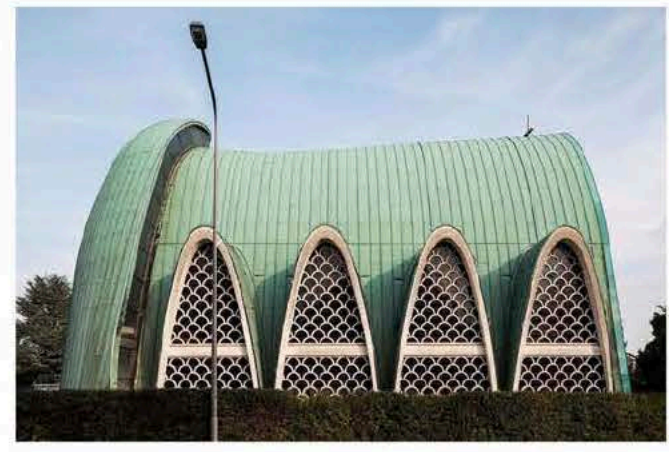
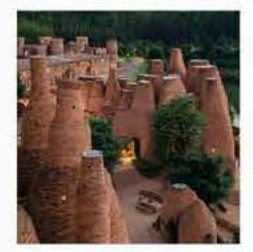
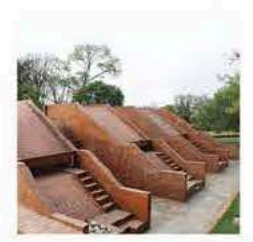
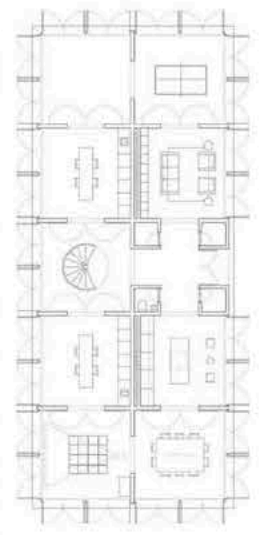
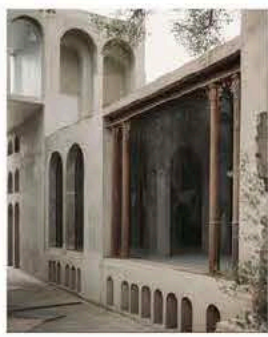


1:20 Section and Material Exploration

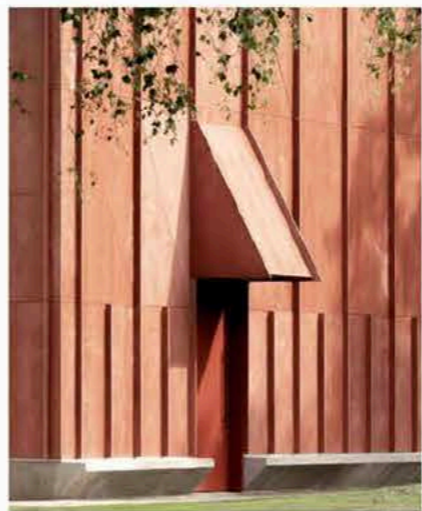
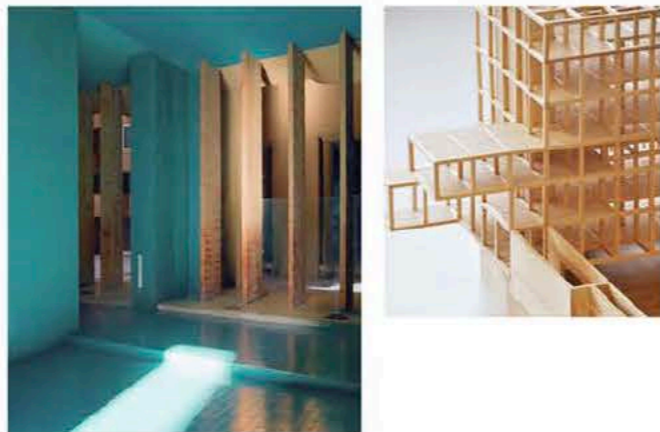
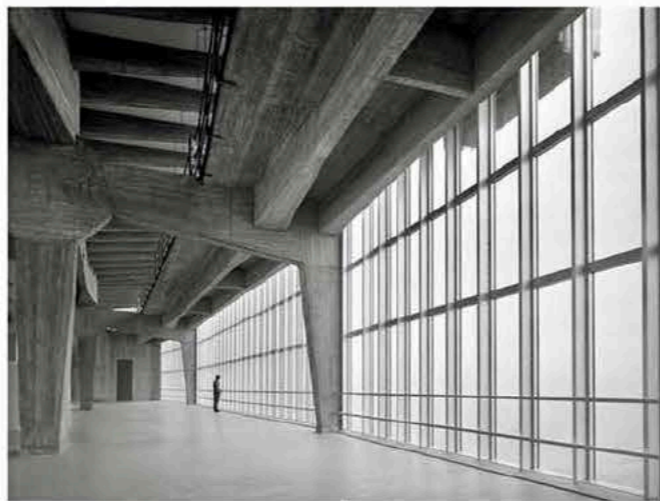
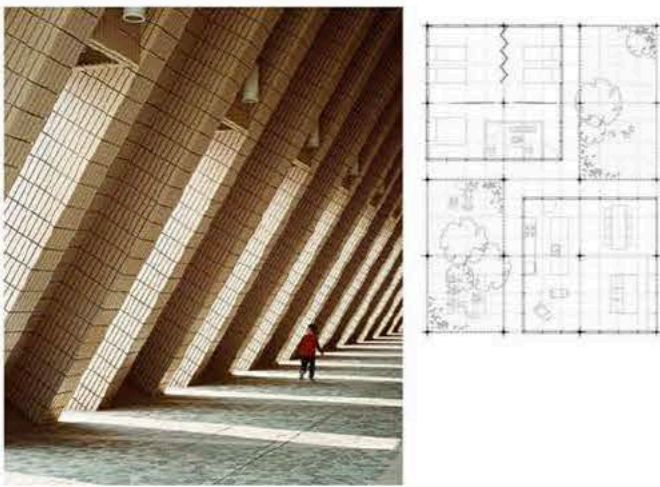
Wall Construction
 300mm insitu concrete
 Damp proof membrane
 Timber Battens 100mm x 75mm @500cc
 100mm insulation
 Exposed concrete Screed



References



References



Elevation Collage

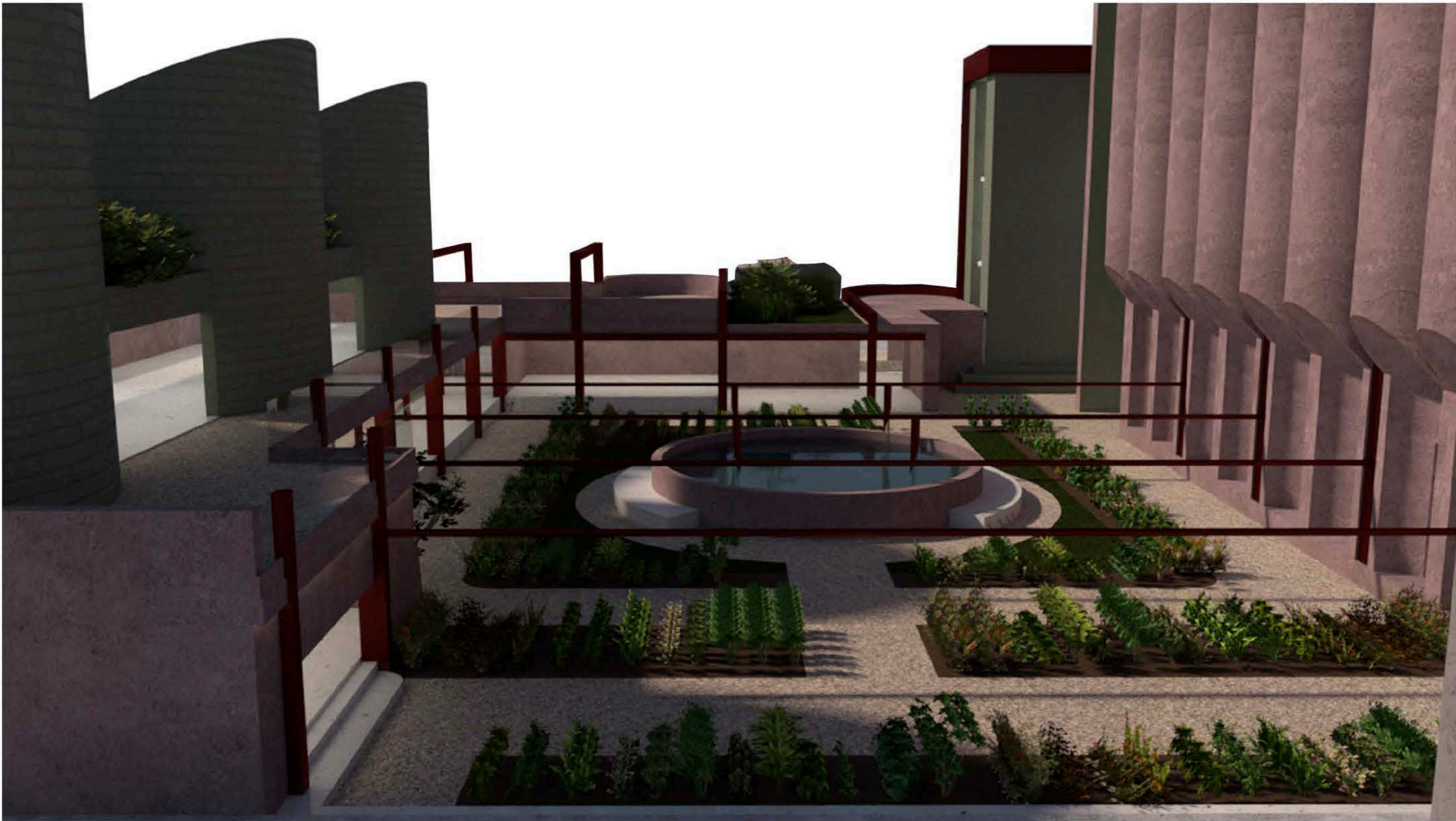


Exploration of spaces

Left to Right

Dispatch
Herb Garden / Outdoor Seating
Front Entrance to Food Coop





Exploration of spaces

Water Strategy

Rainwater Collected from the roof which collects and comes to rest in a central communal body of water before being reused in the garden / allotments



Exploration of spaces

Water Strategy

Rainwater Collected from the roof which collects and comes to rest in a central communal body of water before being reused in the garden / allotments

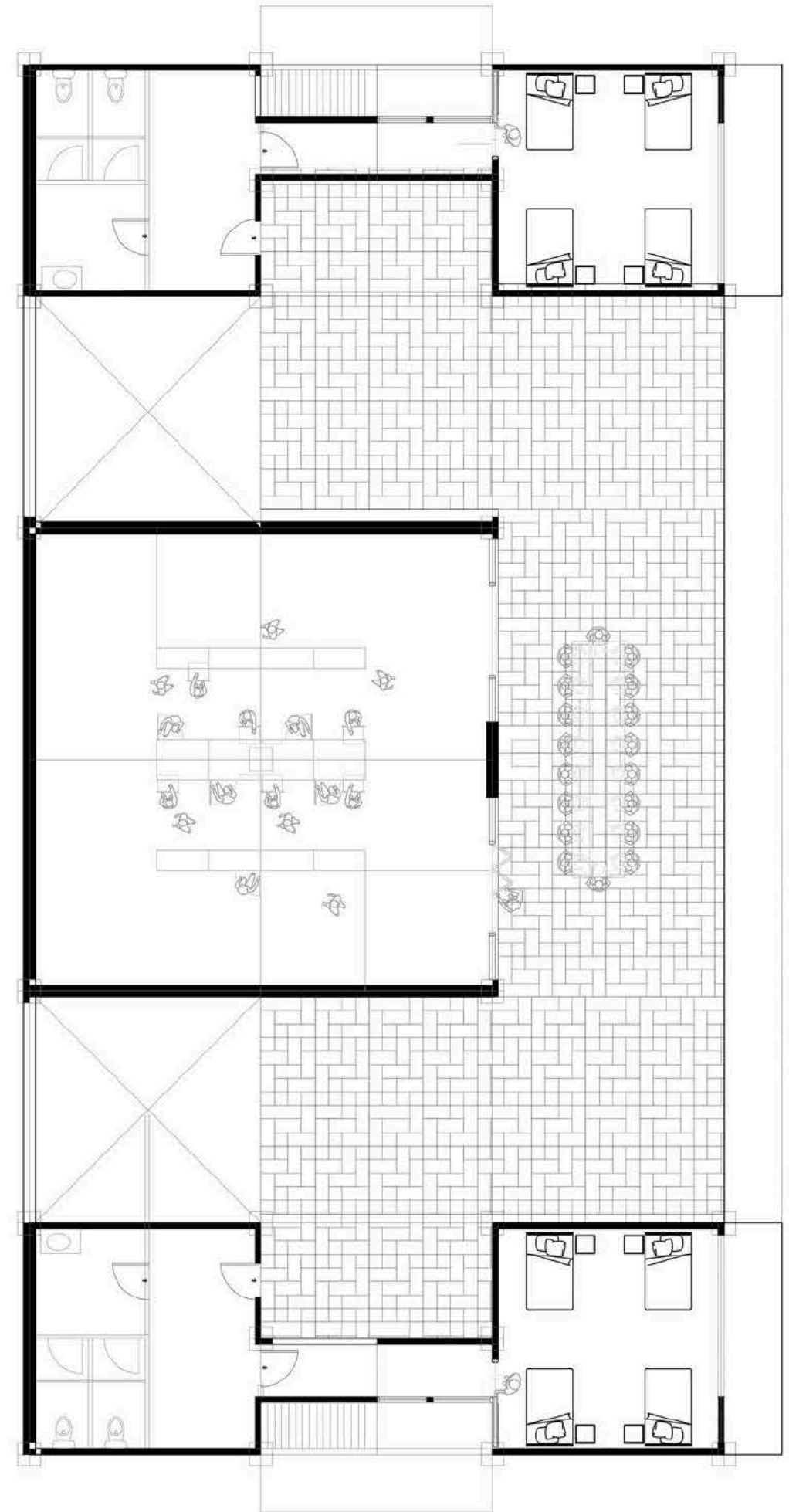
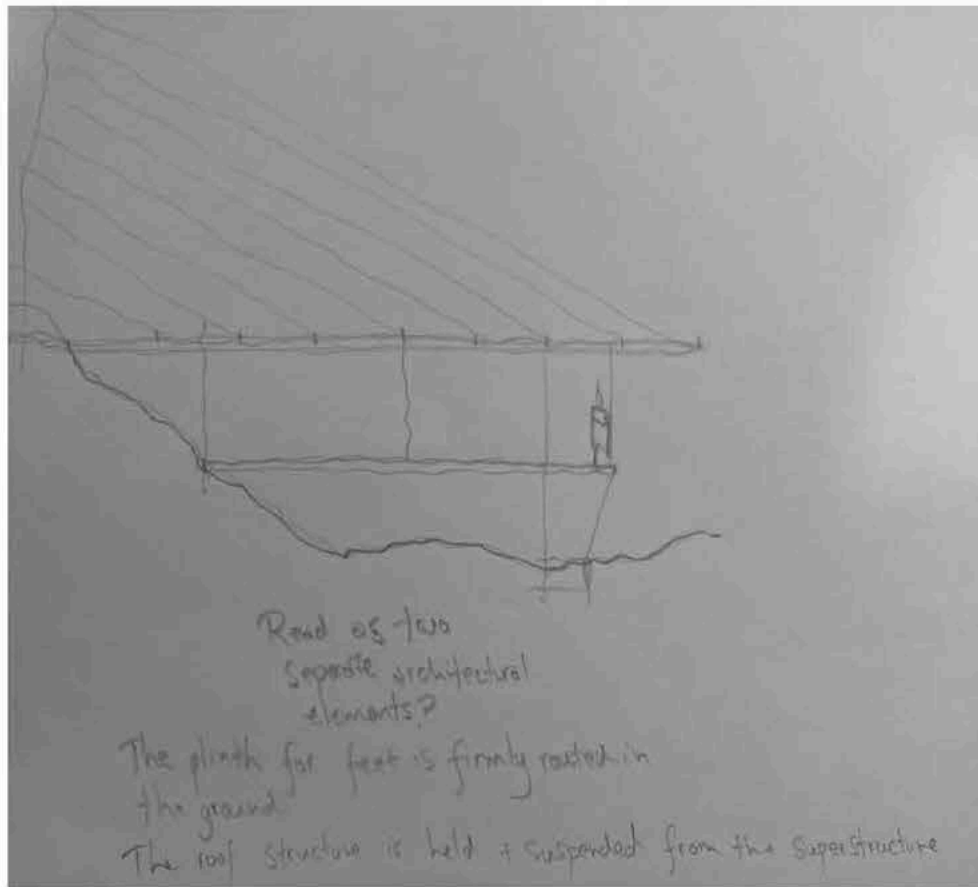
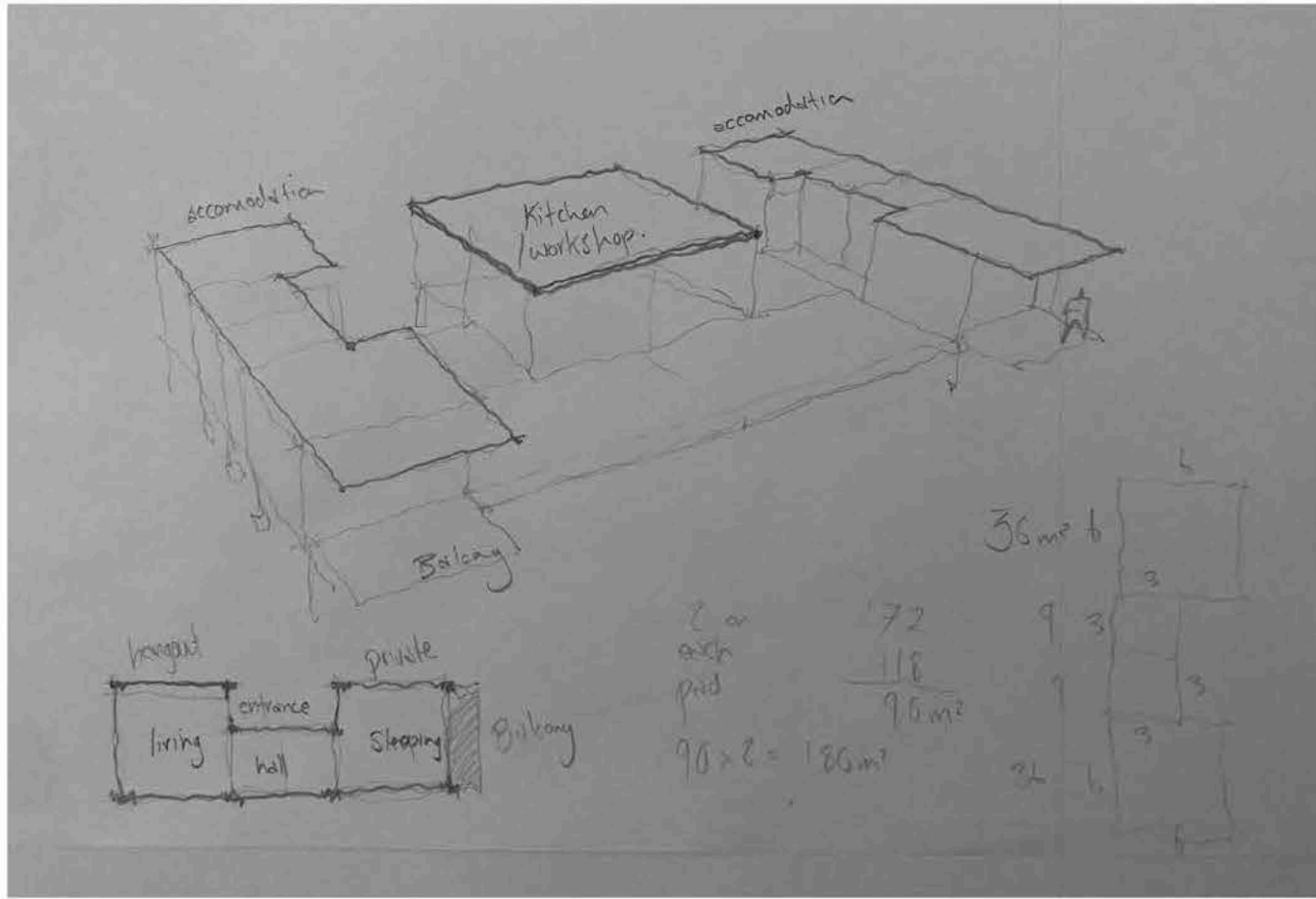


Exploration of spaces

Semi Circular (fluted) facade can double up as a windchime / vertical musical instrument as well as visual connection to food prep space.

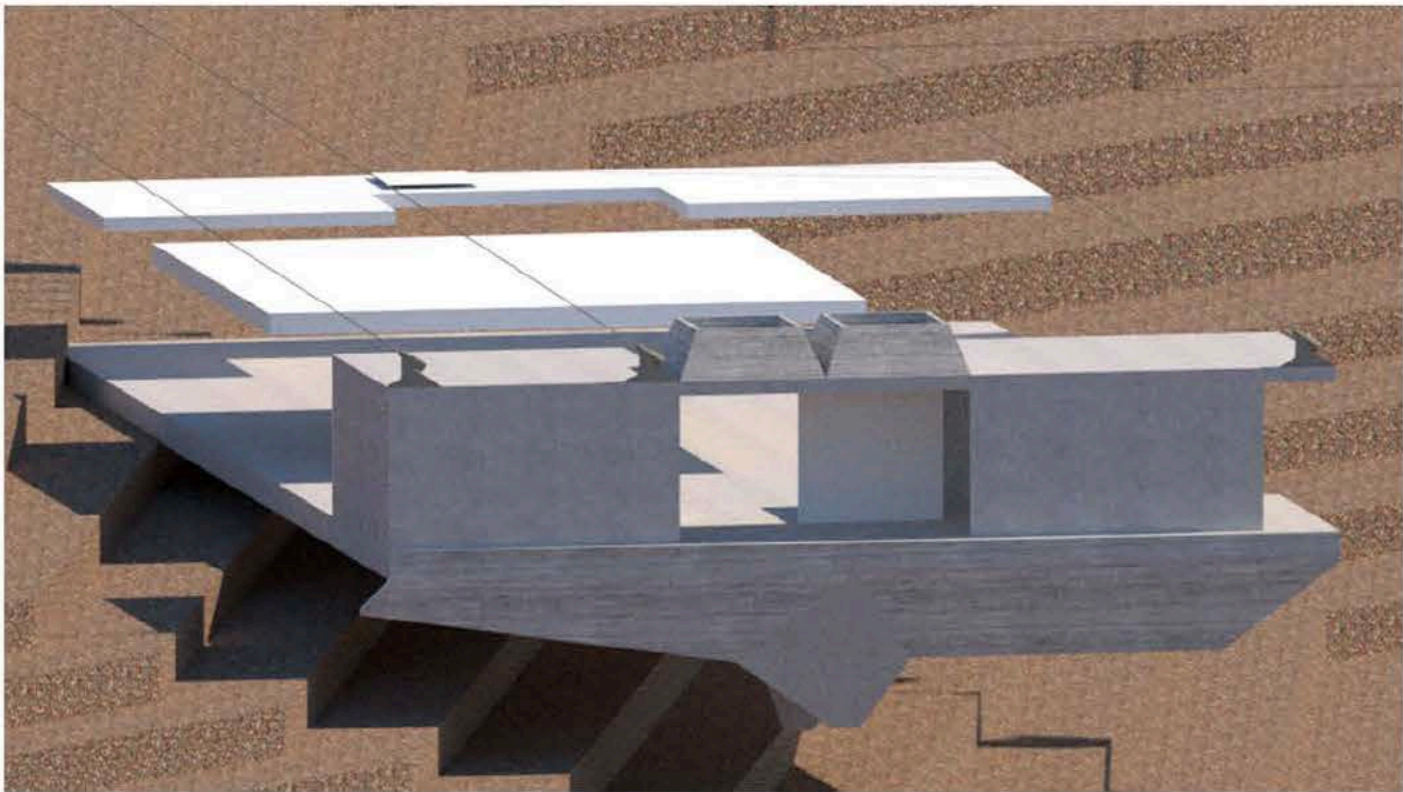
Jamies Farm

Accomodation Pods

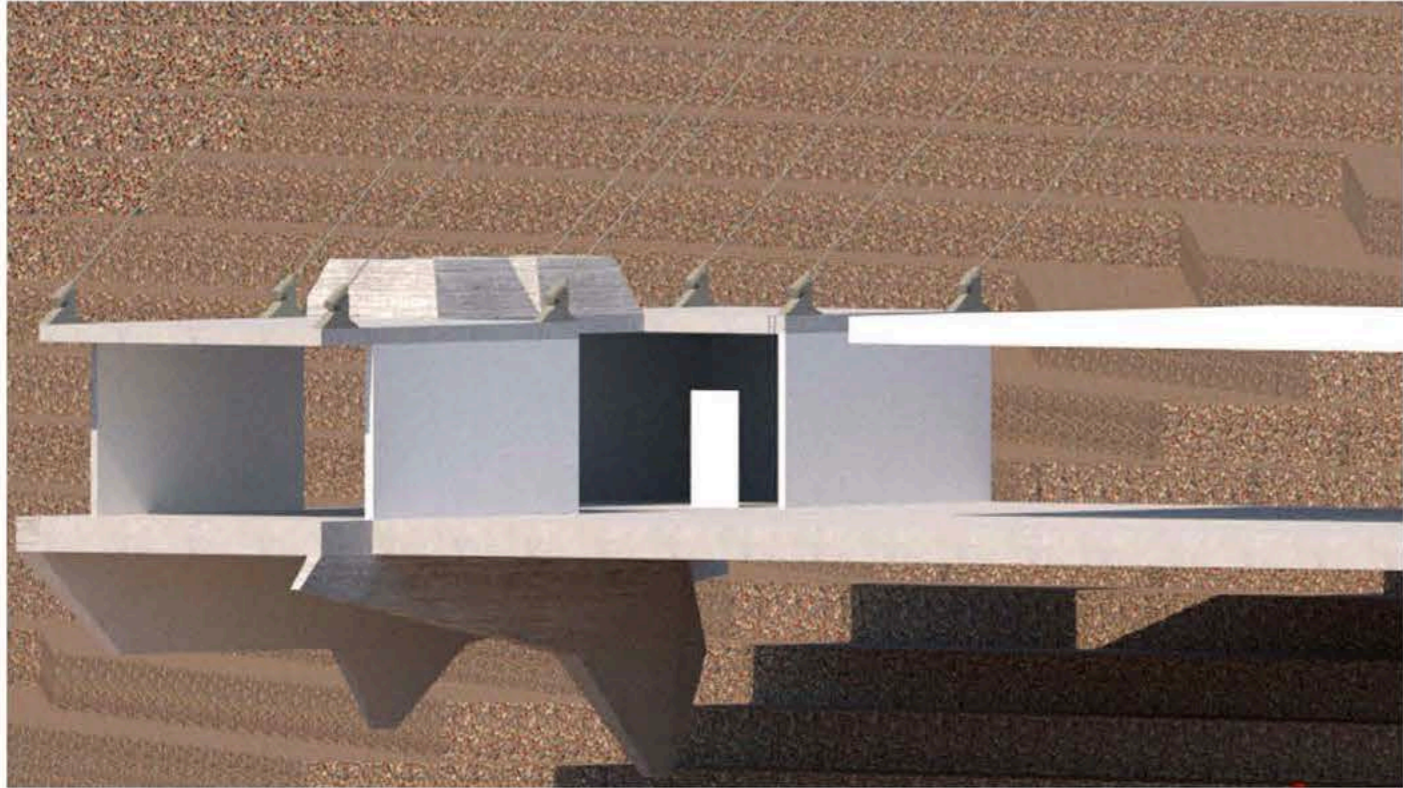


Jamies Farm

Accomodation Pods

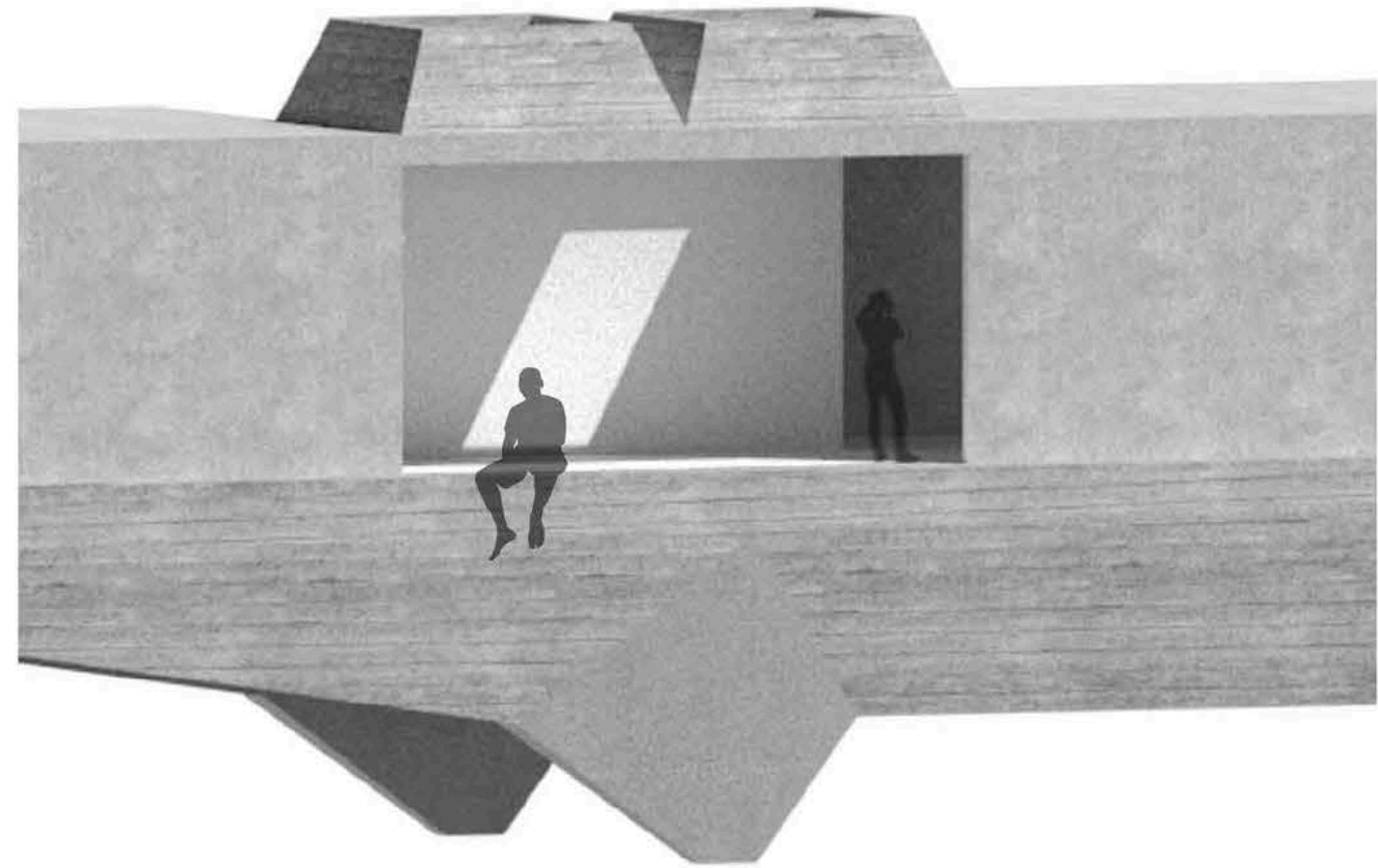
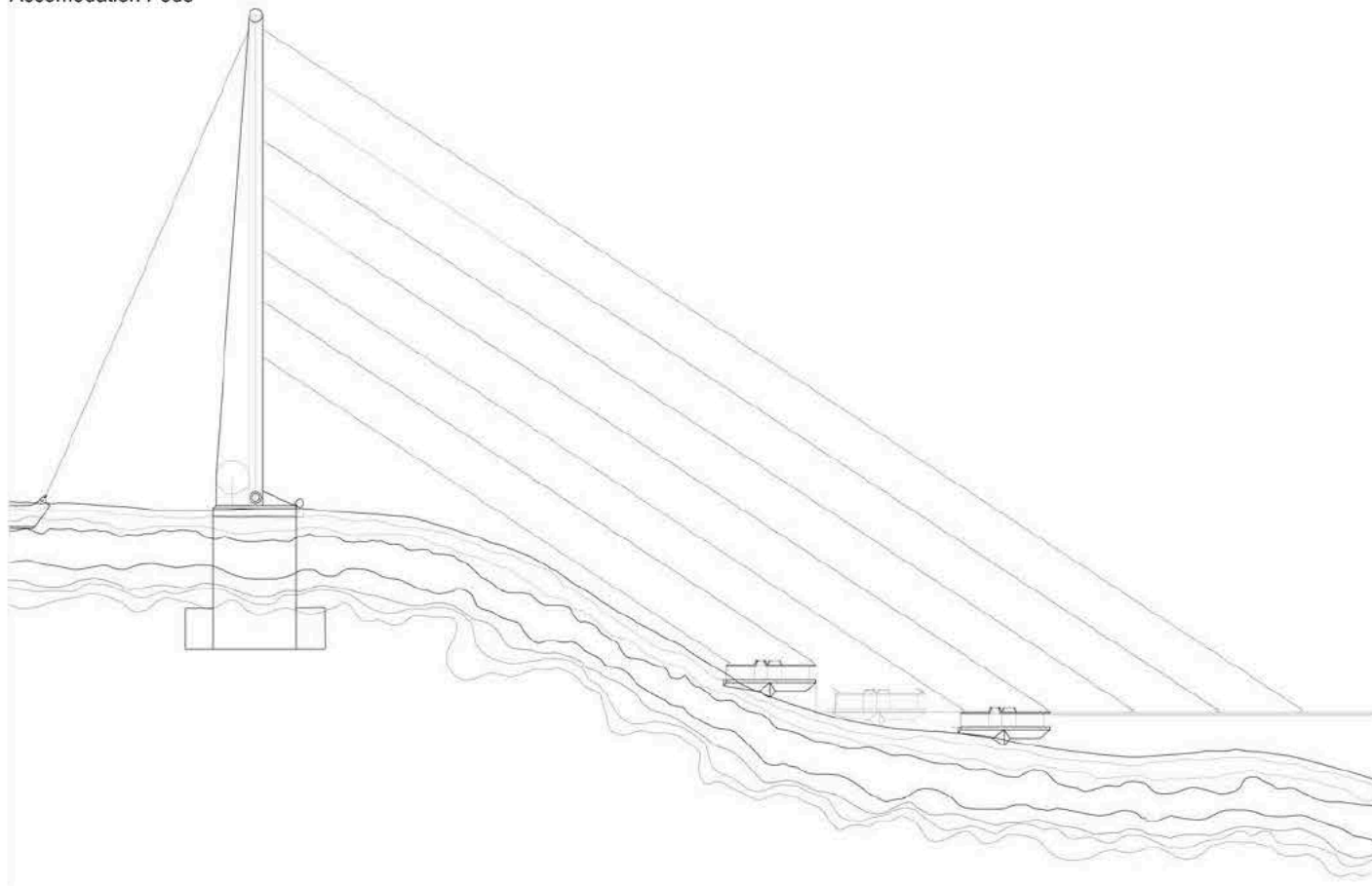


The nature of the buildings allow for a blank canvas where the children can make art on the walls or cast shadows or screen movies on the blank canvas walls



Jamies Farm

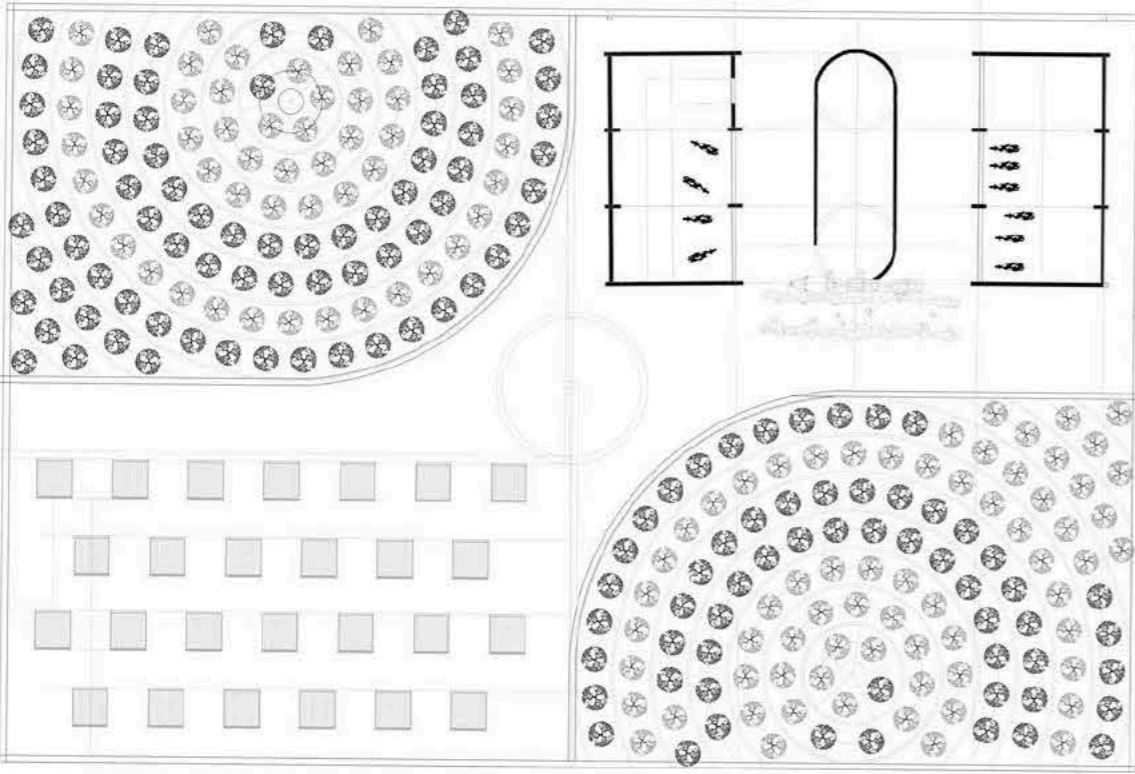
Accomodation Pods



ON SITE ECO SYSTEMS

Built in radial irrigation system
- recessed into plinth

Animal Shelter & Machine
sheds



SOLAR FARM

Apple & pear orchards

