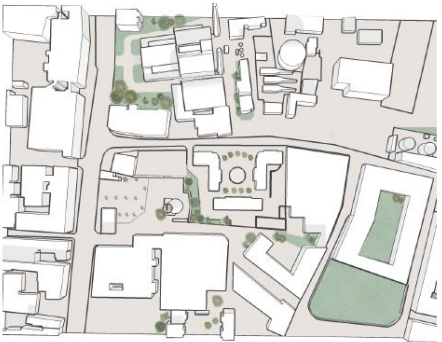


1:300 SITE MODEL WITH NOISE POLLUTION AND SUN FROM SOUTH



VEGETATION STUDY
The wider area of the community is suffering from a lack of open green spaces. It's closest public green space is the Croppie's Acre across the River Liffey.

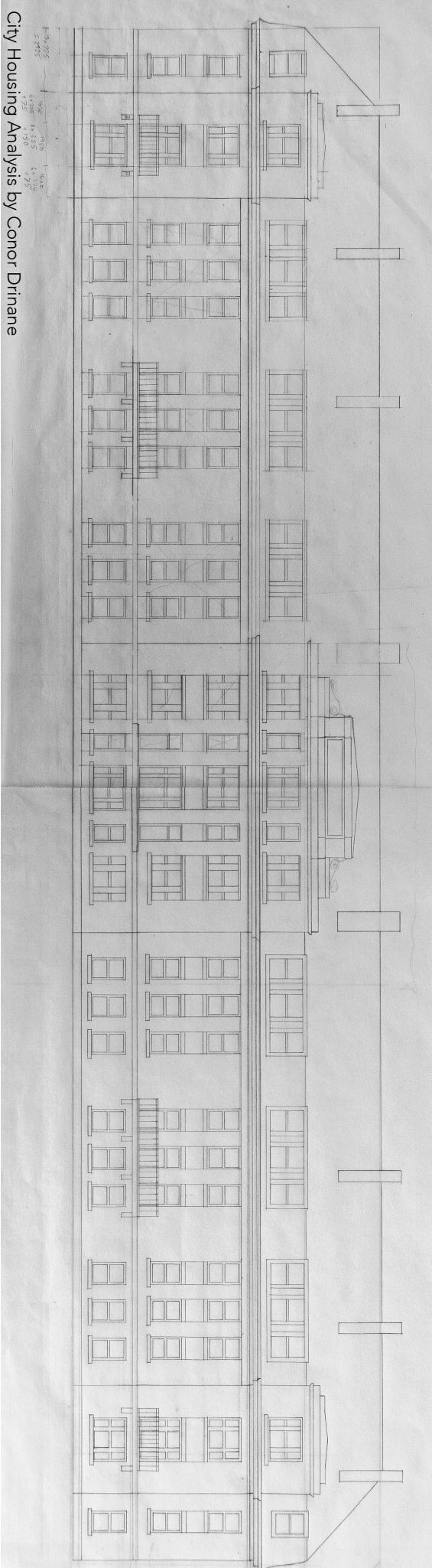
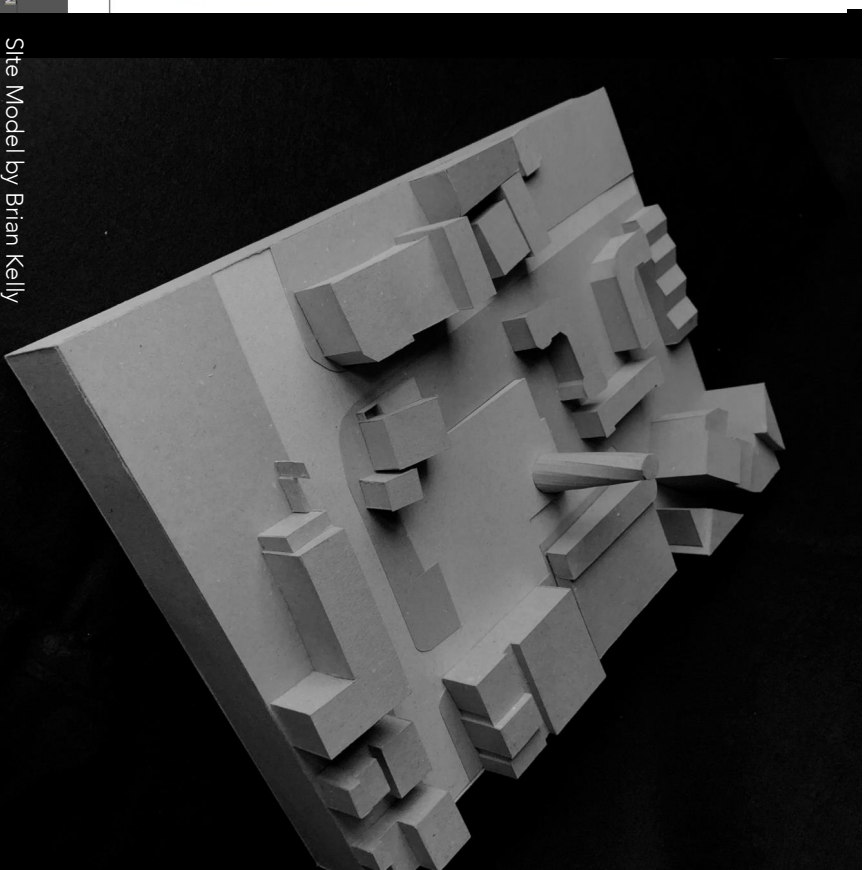


SAMPLE OF SURROUNDING MATERIALS
I am eager to draw inspiration from construction materials of near by buildings to further situate the community centre as a part of the streetscape.

Site Analysis by Isobelle Harrison

1:1000 NORTH-SOUTH SECTION

Site Model by Brian Kelly



City Housing Analysis by Conor Drinane